

# Enclosures



Switches • Enclosures • Industrial Control • LED Lighting • Connectors  
Cable • Audio-Visual Alarms • Military Standard Transport Cases

# Switches Plus Components



Switches Plus Components, a family owned entity, has been in business for over 40 years, providing great service and high quality products to customers engaged in the electrical and electronics industry.

Conveniently located in Braeside Victoria, we fill the role of being a one stop shop in a number of product categories;

**Cable, Switches, Enclosures, Industrial Control, LED Lighting, Connectors, Audio-Visual alarms, and Military Standard Transport Cases.**

We also provide some niche solutions with a range of LCD displays, step motors and controllers, along with IP65 rated keyboards for infection control and industrial applications. In response to many customer requests, we are also developing a new product sourcing service to help customers find the right products, using our extensive network of suppliers, providing significant savings in your time and money and importantly, allowing you to focus on what you do best.

Our staff are technically trained, and have years of hands on experience. We understand and can relate to your specific challenges and requirements, and our ingrained knowledge will benefit you and immediately put you at ease.

Our business principal is to always give value and make your purchases with us, easy and effortless. We always go the extra mile, providing you with the right advice and prompt delivery, in full, and on time. Our product portfolio is extensive, we hold a wide range of inventory, so more often than not we have the right product here, when you need it.

We maintain a quality management system, and are constantly on the lookout for new products, ideas and better ways to communicate with and serve you.

**Make the switch today, and find out why so many customers have “turned on” to Switches Plus.**

We distribute the highest quality products from some of the leading manufacturers in their respective fields. Over 90% of our product range is manufactured in Germany, Italy, Spain, England, USA, Japan, Austria or France, and you can rest assured that we only source products from the best and most trusted manufacturers in the world.

We have also partnered with one of the world’s largest electronic/electrical buying houses, giving you access to millions of products from over 2500 world leading suppliers, making us a true one stop shop for all your product sourcing requirements.



Switches Plus Components Pty Ltd

242 Governor Road, Braeside, VIC, 3195

Phone: 03 8587 3200

Email: sales@switchesplus.com.au

## Enclosures

Our stocked range of enclosures is vast and offers you the ability to house and protect your electrical, electronic, hydraulic and pneumatic components from environmental conditions as well as protect personnel from equipment risks.

Our range of enclosures include those made from plastics such as ABS, Polycarbonate and Polyester. We also offer Fibreglass, Steel, Stainless Steel, Aluminium and die-cast Aluminium.



<b>Cable Glands</b>	<b>19</b>	<b>Plastic Enclosures IP67</b>	<b>8</b>
Brass Cable Gland	19	Hinged Lid, Plastic Draw Latches	10
Brass Thread Enlarger	19	Hinged Lid, Steel Draw Latches	11
EMC Brass Cable Gland	19	Hinged Transparent Lid, Plastic Draw Latches	11
Nylon Cable Gland	19	Hinged Transparent Lid, Steel Draw Latches	11
		Terminal box	8
<b>Diecast Aluminium Enclosures</b>	<b>13</b>	Terminal box with Transparent Lid	9
Diecast aluminium enclosures	13	Terminal Box (includes terminals)	12
Diecast flanged aluminium enclosures	13	Terminal Box with glands (includes terminals)	12
		Terminal box with Integrated Mounting Plate	12
<b>Electronic Enclosures</b>	<b>14</b>	<b>Plastic Enclosure Accessories</b>	<b>12</b>
Retex Series 70	14	Locks	12
Supertronic enclosures	14	Mounting Brackets	12
		Ventilators	12
<b>Fibreglass Enclosures IP66</b>	<b>6</b>	<b>Steel Industrial Enclosures IP66</b>	<b>4</b>
Hinged Deep Lid, Twin Padlock Latches	7	Powder coated Steel Enclosures	4
Hinged Lid, Twin Butterfly Latches	6	Stainless Steel Enclosures	5
Hinged Lid, Twin Butterfly Latches	7		
Hinged Lid, Twin Draw Locking Latches	6	<b>Temperature control</b>	<b>18</b>
Hinged Lid, Twin Padlock Latches	7	Filters and fans	18
Hinged Lid, Two Screws	6	Thermostats	18
Hinged Lid, Two Screws	7	Ventilators	18

## Enclosure Selection

The table below indicates basic properties of our enclosures. More detailed resistance tables are available upon request.

	ABS	Polycarbonate	Polyester	Fibreglass	Powder coated steel	304 Stainless steel
Outdoor Use	★	★★★	★★★★★	★★★★★	★★★★★	★★★★★
Indoor Use	★★★★★	★★★★★	★★★★★	★★★★★	★★★★★	★★★★★
High rigidity	★★★	★★★★	★★★★	★★★★★	★★★★★	★★★★★
Impact resistance	★★★	★★★★★	★★★★★	★★★★★	★★★★★	★★★★★
Chemical resistance	★★★	Not tested	★★★★★	★★★★★	★★★★★	★★★★★
Flammability	UL94-HB	UL94-V0	UL94-5VA	UL94-5V	Non-flammable	Non-flammable
★Poor	★★★Good	★★★★Very Good	★★★★★Excellent			

# Steel Industrial Enclosures IP66



## Powder coated Steel Enclosures

Our Industrial grade enclosures come with a minimum protection rating of IP66 (Dust tight and protected against powerful water jets). The mounting plate is a generous 2mm thick to carry the heaviest of loads.

Our Steel enclosures are UV resistant powder coated, ensuring they will last and continue to look good. Subject to minimum order requirements and lead times we can modify and custom build enclosures to your specifications.

### Specifications:

IP66

Industrial Duty

Fitted with Gland Plate for convenient and fast cable entry

UV Resistant Powder Coat Finish



Part Number RAL 7035 (grey)	Part Number RAL 2000 (orange)	Dimensions (H x W x D) (mm)	Wall Metal Thickness (mm)	Door Metal Thickness (mm)	Weight (kg)
FT202015		200 x 200 x 150	1.2	1.5	2.9
FT302015		300 x 200 x 150	1.2	1.5	3.9
FT303020	FT303020-X15	300 x 300 x 200	1.2	1.5	5.8
FT403020		400 x 300 x 200	1.2	1.5	7.2
FT404020	FT404020-X15	400 x 400 x 200	1.2	1.5	9.1
FT503020		500 x 300 x 200	1.2	1.5	10.4
FT504020		500 x 400 x 200	1.2	1.5	11
FT504025		500 x 400 x 250	1.2	1.5	12
FT505020	FT505020-X15	500 x 500 x 200	1.2	1.5	13.4
FT505025		500 x 500 x 250	1.2	1.5	13.9
FT604020		600 x 400 x 200	1.2	1.5	12.9
FT604030		600 x 400 x 300	1.2	1.5	15
FT605025		600 x 500 x 250	1.2	1.5	16.9
FT606020		600 x 600 x 200	1.2	1.5	18.4
FT606025	FT606025-X15	600 x 600 x 250	1.2	1.5	19.6
FT606030		600 x 600 x 300	1.2	1.5	20.8
FT705025		700 x 500 x 250	1.2	1.5	19.2
FT806030	FT806030-X15	800 x 600 x 300	1.2	1.8	27.7
FT808030		800 x 800 x 300	1.2	1.8	34.5
FT1006030		1000 x 600 x 300	1.5	1.8	37.8
FT1008030	FT1008030-X15	1000 x 800 x 300	1.5	1.8	47.5
FT1208030		1200 x 800 x 300	1.5	1.8	53.7



Switches Plus Components Pty Ltd

242 Governor Road, Braeside, VIC, 3195

Phone: 03 8587 3200

Email: sales@switchesplus.com.au

# Steel Industrial Enclosures IP66



## Stainless Steel Enclosures

These enclosures are manufactured with 1.2mm thick 304 grade stainless steel, with 1.5mm thick doors for extra rigidity. The mounting plate is a generous 2mm thick to carry the heaviest of loads. Interior and mounting plates are painted white to reduce glare inside enclosure.

With ingress protection rating of IP66, and the heavy duty stainless steel construction, these enclosures are sure to perform and impress.

### Specifications:

IP66

Industrial Duty

Fitted with 2mm Mounting Plate

Interior and Mounting Plates powder coated white to reduce glare when fitting out or conducting maintenance



Part Number	Dimensions (H x W x D) (mm)	Wall Metal Thickness (mm)	Door Metal Thickness (mm)	Weight (kg)
FTSS202015	200 x 200 x 150	1.2	1.5	2.9
FTSS302015	300 x 200 x 150	1.2	1.5	3.9
FTSS302515	300 x 250 x 150	1.2	1.5	4.5
FTSS303015	300 x 300 x 150	1.2	1.5	5.3
FTSS303020	300 x 300 x 200	1.2	1.5	5.8
FTSS403020	400 x 300 x 200	1.2	1.5	7.2
FTSS404020	400 x 400 x 200	1.2	1.5	9.1
FTSS503020	500 x 300 x 200	1.2	1.5	10.4
FTSS504020	500 x 400 x 200	1.2	1.5	11
FTSS504025	500 x 400 x 250	1.2	1.5	12
FTSS604020	600 x 400 x 200	1.2	1.5	12.9
FTSS605025	600 x 500 x 250	1.2	1.5	16.9
FTSS606020	600 x 600 x 200	1.2	1.5	18.4
FTSS606025	600 x 600 x 250	1.2	1.5	19.6
FTSS606030	600 X 600 X 300	1.2	1.5	20.8
FTSS705025	700 x 500 x 250	1.2	1.5	19.2
FTSS806030	800 x 600 x 300	1.2	1.8	27.7
FTSS1008030	1000 x 800 x 300	1.5	1.8	47.5

Our range of enclosures include those made from plastics such as ABS, Polycarbonate and Polyester. We also offer Fibreglass, Aluminium and die-cast Aluminium. More information is available within our "Enclosures" catalogue.



Switches Plus Components Pty Ltd

242 Governor Road, Braeside, VIC, 3195

Phone: 03 8587 3200

Email: sales@switchesplus.com.au

## DiamondShield Series Enclosures

Suitable for Indoor & Outdoor Use

The Diamondshield Series is our product offering developed for design flexibility and pleasing aesthetics. Applications include high-end electronics, harsh corrosive environments, and industrial applications both indoors and out. Unique internal panel management capabilities provides the end user with only the features they need for their application, yet able to use every cubic inch of valuable internal enclosure space.

Ideal for where Stainless Steel Enclosures would be considered.

- Corrosion and fire resistant
- Self Extinguishing: Non-Halogenated, non-flame propagating
- Fibreglass reinforced polyester with Stainless Steel fittings
- UV and impact resistant
- Flammability Rating: UL94-5V
- Temperature Range: -40° C to 130° C
- 180° door opening



HW (screws)



HLL (Butterfly latch)



HPL (Draw locking latch)

### Hinged Lid, Two Screws

Part Number	External Dimensions (H x W x D)	Internal Dimensions (H x W x D)	Aluminium Mounting Plate
DS100806HW	290 x 249 x 160	273 x 222 x 154	BP1008AL
DS121006HW	342 x 301 x 160	322 x 272 x 154	BP1210AL



### Hinged Lid, Twin Butterfly Latches

Part Number	External Dimensions (H x W x D)	Internal Dimensions (H x W x D)	Aluminium Mounting Plate
DS161408HLL	447 x 405 x 212	424 x 373 x 205	BP1614AL
DS201610HLL	554 x 461 x 263	524 x 422 x 256	BPJ2016AL

### Hinged Lid, Twin Draw Locking Latches

Part Number	External Dimensions (H x W x D)	Internal Dimensions (H x W x D)	Aluminium Mounting Plate
DS60604HPL	188 x 198 x 110	172 x 172 x 103	BP66AL
DS80604HPL	239 x 198 x 110	223 x 172 x 103	BP86AL
DS80804HPL	239 x 248 x 109	222 x 222 x 103	BP88AL
DS100806HPL	290 x 249 x 160	273 x 222 x 154	BP1008AL
DS121006HPL	342 x 301 x 160	322 x 272 x 154	BP1210AL
DS141206HPL	392 x 352 x 161	374 x 323 x 154	BP1412AL
DS161408HPL	447 x 405 x 212	424 x 373 x 205	BP1614AL
DS181610HPL	502 x 461 x 263	473 x 422 x 256	BP1816AL

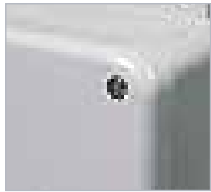


## J & RJ Series Terminal Box

Suitable for Indoor & Outdoor Use

The J Series product line was developed as an industrial enclosure for harsh, aggressive environments. Originally developed as an electrical junction box for the oil refining and petrochem industries, the J series has evolved over the years into a versatile industrial enclosure with varied applications:

- Self Extinguishing Non-flame propagating
- Flammability Rating: UL94-5V
- Temperature Range: -40°C to +120°C
- 180° door opening



HW (screws)



HLL (Butterfly latch)



HPL (Padlock latch)



### Hinged Lid, Two Screws

Part Number	External Dimensions (H x W x D)	Internal Dimensions (H x W x D)	Aluminium Mounting Plate
J-806HW	245 x 191 x 119	196 x 146 x 113	BP86AL
J-1412HW	394 x 342 x 158	343 x 293 x 151	BP1412AL
J-1614HW	445 x 393 x 157	396 x 344 x 151	BP1614AL

### Hinged Lid, Twin Butterfly Latches

Part Number	External Dimensions (H x W x D)	Internal Dimensions (H x W x D)	Aluminium Mounting Plate
J-1008HLL	295 x 239 x 107	247 x 196 x 101	BP1008AL
J-1210HLL	344 x 291 x 133	299 x 249 x 125	BP1210AL

### Hinged Lid, Twin Padlock Latches

Part Number	External Dimensions (H x W x D)	Internal Dimensions (H x W x D)	Aluminium Mounting Plate
J-604HPL	190 x 138 x 119	148 x 113 x 98	BP64AL
J-1008HPL	295 x 239 x 107	247 x 196 x 101	BP1008AL
J-1210HPL	344 x 291 x 133	299 x 249 x 125	BP1210AL
J-1212HPL	344 x 340 x 161	297 x 297 x 155	BP1212AL
J-1412HPL	394 x 342 x 158	343 x 293 x 151	BP1412AL
J-1614HPL	445 x 393 x 157	396 x 344 x 151	BP1614AL
J-1816HPL	499 x 447 x 224	449 x 399 x 215	BP1816AL

### Hinged Deep Lid, Twin Padlock Latches

Part Number	External Dimensions (H x W x D)	Internal Dimensions (H x W x D)	Aluminium Mounting Plate
RJ-808HPL	243 x 238 x 159	196 x 196 x 152	BP88AL
RJ-1210HPL	344 x 291 x 167	299 x 249 x 161	BP1210AL
RJ-1614HPL	445 x 392 x 195	396 x 344 x 189	BP1614AL
RJ-1816HPL	499 x 444 x 270	449 x 399 x 262	BP1816AL
RJ-2016HPL	559 x 446 x 270	501 x 399 x 262	BPJ2016AL



## Terminal box

IP67, Solid colour base and lid

An extensive range of plastic enclosures suitable for various applications. Material choice is dependant on application.

ABS plastic is suitable for indoor use only, but with the addition of polycarbonate, the ABS/PC blend is suitable for outdoor applications. Polyester will provide even greater strength and resistance to the elements.

All terminal boxes are rated at IP67.



ABS	ABS/ Polycarbonate	Polyester	Dimensions (H x W x D)	Plastic Mounting plate	Steel Mounting Plate
	DS-PG-0808		82mm x 80mm x 60mm	Not available	Not available
DS-AG-1010			100mm x 100mm x 100mm	Not available	DS-1010
DS-AG-0811-S	DS-PG-0811-S		110mm x 80mm x 45mm	DS-0811PL	DS-0811
DS-AG-0811			110mm x 80mm x 70mm		
DS-AG-1212		DS-PCG-1212	125mm x 125mm x 100mm	DS-1212PL	
DS-AG-1212-S		DS-PCG-1212-S	125mm x 125mm x 75mm		
EL-AG-1313			130mm x 130mm x 35mm		Not available
EL-AG-1313B			130mm x 130mm x 60mm	Not available	
EL-AG-0813		EL-PCG-0813	130mm x 80mm x 35mm		
EL-AG-0813-B			130mm x 80mm x 60mm		
DS-AG-0813	DS-PG-0813	DS-PCG-0813	130mm x 80mm x 70mm	DS-0813PL	DS-0813
DS-AG-0813-1			130mm x 80mm x 85mm		
DS-AG-0816-S		DS-PCG-0816-S	160mm x 80mm x 55mm	Not available	DS-0816
DS-AG-0816			160mm x 80mm x 90mm		
DS-AG-1417	DS-PG-1417	DS-PCG-1417	170mm x 140mm x 95mm	DS-1417PL	DS-1417
DS-AG-1217-1		DS-PCG-1217-1	175mm x 125mm x 100mm	DS-1217PL	DS-1217
DS-AG-1217			175mm x 125mm x 75mm		
DS-AG-1717-1			175mm x 175mm x 100mm	DS-1717PL	DS-1717
EL-AG-1318			180mm x 130mm x 35mm	Not available	Not available
EL-AG-1318B			180mm x 130mm x 60mm		
DS-AG-0818	DS-PG-0818	DS-PCG-0818	180mm x 80mm x 70mm	DS-0818PL	DS-0818
		DS-PCG-1919	190mm x 190mm x 130mm	DS-1919PL	DS-1919
DS-AG-1520		DS-PCG-1520	200mm x 150mm x 100mm	DS-1520PL	DS-1520
DS-AG-2020			200mm x 200mm x 130mm	DS-2020PL	DS-2020
	DS-PG-1423	DS-PCG-1423	230mm x 140mm x 95mm	DS-1423PL	DS-1423
DS-AG-1525		DS-PCG-1525	250mm x 150mm x 100mm	DS-1525PL	DS-1525
DS-AG-1525-1		DS-PCG-1525-1	250mm x 150mm x 130mm		
		DS-PCG-1725	250mm x 175mm x 75mm	DS-1725PL	DS-1725
		DS-PCG-1725-1	250mm x 175mm x 100mm		
DS-AG-0825			250mm x 80mm x 70mm	DS-0825PL	DS-0825
DS-AG-0825-1			250mm x 80mm x 85mm		
DS-AG-2819	DS-PG-2819	DS-PCG-2819	280mm x 190mm x 130mm	DS-2819PL	DS-2819
	DS-PG-2819-1	DS-PCG-2819-1	280mm x 190mm x 180mm		
DS-AG-2828		DS-PCG-2828	280mm x 280mm x 130mm	DS-2828PL	DS-2828



## Terminal box

IP67, Solid colour base and lid

ABS	ABS/ Polycarbonate	Polyester	Dimensions (H x W x D)	Plastic Mounting plate	Steel Mounting Plate
DS-AG-2834			340mm x 280mm x 130mm	DS-2834PL	Not available
DS-AG-3819		DS-PCG-3819	380mm x 190mm x 130mm	DS-3819PL	DS-3819
		DS-PCG-3819-1	380mm x 190mm x 180mm		
DS-AG-3828	DS-PG-2838	DS-PCG-3828	380mm x 280mm x 130mm	DS-3828PL	DS-3828
DS-AG-3828-1			380mm x 280mm x 180mm		
DS-AG-5638		DS-PCG-5638	560mm x 380mm x 180mm	Not available	DS-5638

## Terminal box with Transparent Lid

IP67, Solid colour base and polycarbonate lid



ABS	ABS/ Polycarbonate	Polyester	Dimensions (H x W x D)	Plastic Mounting plate	Steel Mounting Plate
DS-AT-1010			100mm x 100mm x 100mm	Not available	Not available
DS-AT-1212		DS-PCT-1212	125mm x 125mm x 100mm	DS-1212PL	
DS-AT-1217		DS-PCT-1217	175mm x 125mm x 75mm	DS-1217PL	DS-1217
DS-AT-0818		DS-PCT-0818	180mm x 80mm x 70mm	DS-0818PL	DS-0818
DS-AT-1919		DS-PCT-1919	190mm x 190mm x 130mm	DS-1919PL	DS-1919
DS-AT-1520	DS-PT-1520		200mm x 150mm x 100mm	DS-1520PL	DS-1520
		DS-PCT-2020S	200mm x 200mm x 95mm	DS-2020PL	DS-2020
DS-AT-2020	DS-PT-2020		200mm x 200mm x 130mm		
DS-AT-1525-1			250mm x 150mm x 130mm	DS-1525PL	DS-1525
		DS-PCT-1717	175mm x 175mm x 75mm	DS-1717PL	DS-1717
DS-AT-1725			250mm x 175mm x 75mm	DS-1725PL	DS-1725
DS-AT-1725-1			250mm x 175mm x 100mm		
DS-AT-0825-1			250mm x 80mm x 85mm	DS-0825PL	DS-0825
DS-AT-2819			280mm x 190mm x 130mm	DS-2819PL	DS-2819
DS-AT-2828			280mm x 280mm x 130mm	DS-2828PL	DS-2828
DS-AT2834			280mm x 340mm x 130mm	DS-2834PL	Not available
DS-AT2838			280mm x 380mm x 130mm	DS-3828PL	DS-3828
DS-AT2838-1			280mm x 380mm x 180mm		
DS-AT-3819		DS-PCT-3819	380mm x 190mm x 130mm	DS-3819PL	DS-3819
		DS-PCT-5638	560mm x 380mm x 180mm	Not available	DS-5638

## Hinged Lid, Plastic Draw Latches

IP67, Solid colour base and lid



ABS	Polyester	Dimensions (H x W x D)	Plastic Mounting plate	Steel Mounting Plate
EN-AG-1013		130mm x 100mm x 70mm	Included	
	EN-PCG-1013	130mm x 100mm x 70mm	DS-1013PL	Not available
EN-AG-1015		150mm x 100mm x 70mm	Included	
NE-AG-1515	NE-PCG-1515	150mm x 150mm x 90mm	DS-1515PL	
	NE-PCG-2919-S	190mm x 290mm x 100mm	DS-2819PL	DS-2819
EN-AG-1520		200mm x 150mm x 100mm	Included	
	EN-PCG-1520	200mm x 150mm x 100mm	DS-1520PL	DS-1520
	NE-PCG-1722	220mm x 170mm x 110mm		
	EN-PCG-1027	270mm x 100mm x 70mm	DS-1027PL	Not available
NE-AG-1727	NE-PCG-1727	270mm x 170mm x 110mm	DS-1525PL	DS-1525
NE-AG-1929-S	NE-PCG-1929-S	290mm x 190mm x 100mm	DS-2819PL	DS-2819
NE-AG-1929	NE-PCG-1929	290mm x 190mm x 140mm		
NE-AG-2530	NE-PCG-2530	300mm x 250mm x 180mm	Not available	Not available
NE-AG-3030-S	NE-PCG-3030-S	300mm x 300mm x 130mm	DS-3030PL	DS-3030
NE-AG-3030	NE-PCG-3030	300mm x 300mm x 180mm		
NE-AG-2535	NE-PCG-2535	350mm x 250mm x 150mm	DS-2535PL	DS-2535
NE-AG-2939-S	NE-PCG-2939-S	390mm x 290mm x 100mm	DS-2939PL	DS-2939
NE-AG-2939	NE-PCG-2939	390mm x 290mm x 160mm		
NE-AG-3546-S	NE-PCG-3546-S	465mm x 350mm x 160mm	DS-3546PL	DS-3546
NE-AG-3546		465mm x 350mm x 200mm		
EN-AG-4353		530mm x 430mm x 200mm	Not available	DS-4353
EN-AG-5060-S		600mm x 500mm x 180mm	Included	
	EN-PCG-5060-S	600mm x 500mm x 180mm		DS-5060
	EN-PCG-5060	600mm x 500mm x 250mm		
	EN-PCG-5070	700mm x 500mm x 250mm	Not available	
	EN-PCG-5070-S	700mm x 500mm x 180mm		DS-5070

## Hinged Transparent Lid, Plastic Draw Latches

IP67, Solid colour base and polycarbonate lid

ABS	Polyester	Dimensions (H x W x D)	Plastic Mounting plate	Steel Mounting Plate
NE-AT-1013		130mm x 100mm x 70mm	DS-1013PL	Not available
NE-AT-1515	NE-PCT-1515	150mm x 150mm x 90mm	DS-1515PL	
NE-AT-2919	NE-PCT-2919	190mm x 290mm x 140mm	DS-2819PL	DS-2819
EN-AT-1020		200mm x 100mm x 70mm	Included	Not available
NE-AT-1722		220mm x 170mm x 110mm	DS-1520PL	DS-1520
NE-AT-1929-S		290mm x 190mm x 100mm	DS-2819PL	DS-2819
NE-AT-1929	NE-PCT-1929	290mm x 190mm x 140mm		
NE-AT-3030-S		300mm x 300mm x 130mm	DS-3030PL	DS-3030
NE-AT-3030		300mm x 300mm x 180mm		
NE-AT-2939-S		390mm x 290mm x 100mm	DS-2939PL	DS-2939
NE-AT-2939	NE-PCT-2939	390mm x 290mm x 160mm		
NE-AT-3546-S		465mm x 350mm x 160mm	DS-3546PL	DS-3546
NE-AT-3546		465mm x 350mm x 200mm		
EN-AT-5070-S		700mm x 500mm x 180mm	Not available	DS-5070
EN-AT-5070		700mm x 500mm x 250mm		



## Hinged Lid, Steel Draw Latches

IP67, Solid colour base and lid

ABS	Polyester	Dimensions (H x W x D)	Plastic Mounting plate	Steel Mounting Plate
	DS-PCG-01-W	200mm x 300mm x 180mm	DS-2819PL	DS-2819
DS-AG-012		275mm x 225mm x 120mm	Not available	Not available
DS-AG-015	DS-PCG-015	300mm x 200mm x 150mm	DS-015PL	
DS-AG-01	DS-PCG-01	300mm x 200mm x 180mm	DS-2819PL	DS-2819
DS-AG-02-W		300mm X 400mm X 180mm	DS-2939PL	DS-2939
DS-AG-02		400mm x 300mm x 180mm		



## Hinged Transparent Lid, Steel Draw Latches

IP67, Solid colour base and polycarbonate lid

ABS	Polyester	Dimensions (H x W x D)	Plastic Mounting plate	Steel Mounting Plate
	EL-PCT-1318	130mm x 180mm x 35mm	Not available	Not available
	BC-CTP-151509	150mm x 150mm x 90mm	DS-1515PL	
	BC-CTP-172211	220mm x 170mm x 110mm	DS-1520PL	DS-1520
DS-AT-015		300mm x 200mm x 150mm	DS-015PL	Not available
DS-AT-01		300mm x 200mm x 180mm	DS-2819PL	DS-2819
	DS-PCT-02	400mm x 300mm x 180mm	DS-2939PL	DS-2939
	DS-PCT-03	400mm x 500mm x 200mm	DS-4353PL	DS-4353

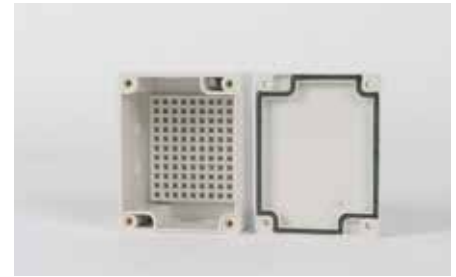


# Plastic Enclosures IP67

## Terminal box with Integrated Mounting Plate

(ABS) Suitable for Indoor Use

Part Number	Dimensions (H x W x D)
PL-AG-0709	90mm x 70mm x 50mm
PL-AG-0609	95mm x 65mm x 56mm
PL-AG-0816	165mm x 85mm x 50mm



## Terminal Box (includes terminals)

(ABS/PC Blend) Suitable for Indoor & Outdoor Use

Part Number	No. of Terminals	Dimensions (H x W x D)
DS-PG-20P	20	170mm x 160mm x 70mm
DS-PG-15P	15	100mm x 200mm x 70mm



## Terminal Box with glands (includes terminals)

(Polyester) Suitable for Indoor & Outdoor Use

Part Number	No. of Terminals	Dimensions (H x W x D)
DS-MTB-4P	4	70mm x 50mm x 40mm
DS-MTB-6P	6	85mm x 55mm x 40mm
DS-MTB-10P	10	95mm x 95mm x 40mm



# Plastic Enclosure Accessories

## Mounting Brackets



Part Number	Description
DS-B-40	40mm Mounting Bracket
DS-B-50	50mm Mounting Bracket
DS-B-60	60mm Mounting Bracket

## Ventilators



Part Number	Description
DS-VH-40	Ventilator for 40mm hole
DS-VH-50	Ventilator for 50mm hole
DS-VH-60	Ventilator for 60mm hole

## Locks



Part Number	Description
DSK-20	Stainless Steel Key Lock
DSK-40	Stainless Steel Padlock Kit

# Diecast Aluminium Enclosures

## Diecast aluminium enclosures

Suitable for Indoor & Outdoor Use

Versatile general purpose aluminium enclosures in a range of sizes and IP ratings. These general purpose die cast boxes are available in a range of sizes, all of which have close fitting lids secured by either 4, 6 or 8 countersunk screws, ensuring excellent EMI / RFI screening.

There will be a plain finish on this range which includes rounded edges and a smooth surface. PCB mounts are included on some models.

Part Number	Colour	IP	PCB Mounts	Dimensions (H x W x D)
1550G	Natural Aluminium	IP54	No	222 x 146 x 55 mm
1590C	Natural Aluminium	IP54	No	120 x 91 x 53 mm
G104	Natural Aluminium	IP65	Yes	64 x 58 x 3.5 mm
G106	Natural Aluminium	IP65	Yes	115 x 65 x 30 mm
G107	Natural Aluminium	IP65	Yes	125 x 80 x 40 mm
G109	Natural Aluminium	IP65	Yes	150 x 63 x 36.5 mm
G117	Natural Aluminium	IP65	Yes	160 x 100 x 81 mm
G120	Natural Aluminium	IP65	Yes	171 x 121 x 55 mm
G125	Natural Aluminium	IP65	Yes	222 x 146 x 82 mm
G137	Natural Aluminium	IP65	Yes	120.5 x 120.5 x 101.5 mm
G139	Natural Aluminium	IP65	Yes	158.5 x 158.5 x 101.5 mm
460-0080	Natural Aluminium	IP66	Yes	222.3 x 146 x 106.7 mm
460-0130	Natural Aluminium	IP66	Yes	250 x 250 x 101 mm



## Diecast flanged aluminium enclosures

Suitable for Indoor & Outdoor Use

This range is flanged for easy mounting and suited to a wide array of applications as they can be easily machined and customised. Examples include remote control systems, radio instrumentation, keypads, display boards, entry system controls and more.

The natural aluminium versions have the flange on the base of the enclosure, with the black models having the flange on the lid. PCB mounts are included on some models.

Part Number	Colour	IP	PCB Mounts	Dimensions (H x W x D)
455-0020	Natural Aluminium	IP54	Yes	114 x 63.6 x 29.5 mm
455-0040	Natural Aluminium	IP54	Yes	114.7 x 63.5 x 54.9 mm
455-0120	Natural Aluminium	IP54	Yes	120 x 100 x 35 mm
1590GFLBK	Black	IP54	No	100 x 50 x 21 mm
1590WBFLBK	Black	IP66	No	111.5 x 59.5 x 27 mm
456-0100	Natural Aluminium	IP66	Yes	140 x 101.6 x 77 mm
456-0120	Natural Aluminium	IP66	Yes	120 x 100 x 36 mm

## Retex Series 70

Suitable for Indoor Use

A complete range of enclosures in high impact ABS to meet various applications within the industrial, electronics and office automation industries. Made in high quality ABS, allows excellent mechanization and resistant to temperatures up to 85 °C With optional EPDM 'O' ring gasket, will comply to IP 65 protection in respect of dust and moisture.

The two halves of the boxes are fixed together using metric screws into M3 inserts. These screw fixings are hidden by plastic covers. Bosses for circuits in all lids and base parts. A keyboard area of different sizes is provided on both the top and base of the box further increasing its flexibility.

Wall mounting facility is provided in two ways, either by separately designed feet or by pre-punch holes in the base. Guides for PCB in vertical mode are incorporated in the base and lid together with 5 mm high bosses for horizontal fixing.

Standard colour: light grey similar to RAL 7035  
 Basis unit includes: lid, base, 4 bolts and 4 screw covers.

Accessories:

- 'O' ring gasket, EPDM rubber.
- multiposition wall mounting kit.



Part Number	Dimensions (H x W x D)
33070004	110 x 85 x 35 mm
33070007	127 x 75 x 30 mm
33070008	127 x 75 x 45 mm
33070011	145 x 90 x 45 mm
33070014	190 x 120 x 60 mm
33070016	220 x 145 x 50 mm
33070017	220 x 145 x 80 mm
33070042	Gasket suits 33070004
33070043	Gasket suits 33070007 & 33070008
33070044	Gasket suits 33070011
33070200	RETEX SERIES 70 WALLMOUNT KIT (SET of 4)

## Supertronic enclosures

Suitable for Indoor use

SUPERTRONIC has established itself as a renown manufacturer in the plastic enclosure market. Our products are generally used in a wide range of industries, among which we find:

- Technology and electronics
- Communication and computing
- Medicine, laboratories, health and wellbeing
- Security, construction, and home automation
- Logistics and transportation - Design, automotive industry, and shipbuilding
- Military and Marine



PP9A model, a case made in highly resistant ABS. This enclosure has slightly rounded corners, and has a body and a lid. It has plenty of space inside and a considerable height. Its lid is decorated with a trim edge, and includes a vent grille which allows gas exchange and sound to come out. Each unit includes circuit fixing screws. Black

Part Number	Dimensions
PP9A BLK	120 x 56 x 42mm



PP15 model. This case is compliant with DIN 43700. It has vertical rails inside in order to make circuit placing easier, and lateral tabs for fixing the case. There is a vent grille on each side of the case. The lower part of the case has a locking lid with 4 screws which makes its machining easier (output for cables, connectors, etc.) Black

Part Number	Dimensions
PP15 BLK	96 x 96 x 70.5mm



A case made in highly resistant ABS. This enclosure with rounded corners is compliant with ROHS, and is the case of choice of many of our customers due to its handy simplicity and its ideal size. It is perfect for small electronic assemblies which need a simple yet elegant case. Each unit includes locking and circuit fixing screws. Black

Part Number	Dimensions
PP1 BLK	100 x 50 x 24mm



PP19 model, a case made in highly resistant ABS. This enclosure has slightly rounded corners, and has a body and a lid. It has plenty of space inside and a considerable height. Each unit includes circuit fixing screws. Black

Part Number	Dimensions
PP19 BLK	125 x 70 x 45mm



PP73 model, a case made of highly resistant ABS. Its snap fit locking mechanisms ensures quicker locking which does not require screws. This enclosure has slightly rounded corners, and is composed of a body and a front panel. It is designed for alarms or sensors, since it has ventilation openings on its sides. It can also be locked by a screw for security reasons. Ivory

Part Number	Dimensions
PP73M IVORY	84 x 84 x 36mm



PP11 model. This case is compliant with DIN 43700. It has vertical rails inside in order to make circuit placing easier, and lateral tabs for fixing the case. There is a vent grille on each side of the case. The lower part of the case has a locking lid with 4 screws which makes its machining easier (output for cables, connectors, etc.) Black

Part Number	Dimensions
PP11 BLK	48 x 96 x 134mm



PP12 model, a case made of highly resistant ABS. Its snap fit locking mechanisms ensures quicker locking which does not require screws. This enclosure with rounded corners has been chosen by many of our customers because of its handy simplicity and its ideal size. Perfect for small electronic assemblies which need a simple yet elegant case, and also for manually operated devices. Black

Part Number	Dimensions
PP12 BLK	79 x 40 x 22mm



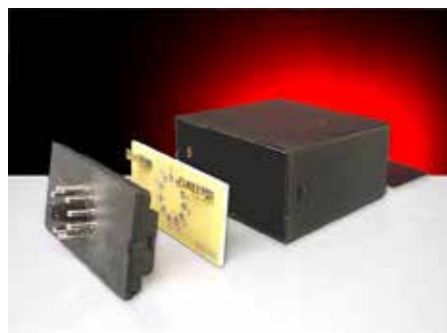
PP14 model, a case made in highly resistant ABS. This enclosure has slightly rounded corners, and has been chosen by many of our customers, who needed an enclosure with a panel shaped sloping surface. Perfect for electronic assemblies which need a simple case for desktop devices. Black

Part Number	Dimensions
PP14 BLK	120 x 56 x 35mm



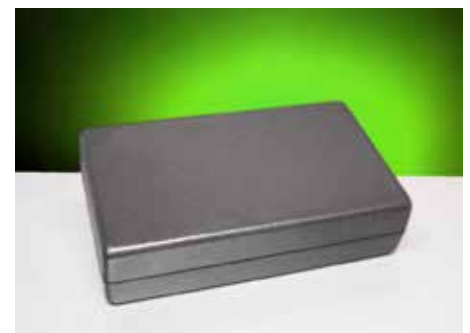
PP16 model. This case is compliant with DIN 43700. It has vertical rails inside in order to make circuit placing easier, and lateral tabs for fixing the case. There is a vent grille on each side of the case. The lower part of the case has a locking lid with 4 screws which makes its machining easier (output for cables, connectors, etc.) Black

Part Number	Dimensions
PP16 BLK	96 x 96 x 133mm



Model PP17 , a box made of ABS and Noryl for the socket. It has an 11- pin connector socket for connection . Black

Part Number	Dimensions
PP17 BLK	77 x 80 x 42mm



PP18 model, a case made in highly resistant ABS. This enclosure has slightly rounded corners, and has a body and a lid. Its size is perfect for manually operated devices. Each unit includes locking and circuit fixing screws. Black

Part Number	Dimensions
PP18 BLK	102 x 60 x 26mm



PP2 model, a case made in highly resistant ABS. This enclosure has slightly rounded corners, and is the case of choice of many of our customers due to its ideal size. It has a snap fit mechanism involving bolts which does not require screws. Black



PP21 model, a case made in highly resistant ABS. This enclosure has slightly rounded corners, and has a body and a lid. It has plenty of space inside. Each unit includes a circuit fixing screw. Black



PP32 model, a case made in highly resistant ABS. This enclosure has bevelled corners, and has a body, a lid, and a peep hole. Its size is perfect for manual devices. Each unit includes locking and circuit fixing screws. Black

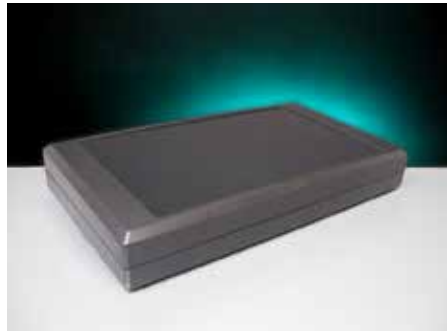
Part Number	Dimensions
PP2 BLK	153 x 73 x 43mm

Part Number	Dimensions
PP21 BLK	107 x 55 x 36mm

Part Number	Dimensions
PP32 BLK	125 x 67 x 30mm



PP33 model, a case made in highly resistant ABS. This enclosure has bevelled corners, and has a body, a lid, and a peep hole. Its size is perfect for manual devices. Each unit includes locking and circuit fixing screws. Grey



PP37 model, a case made in highly resistant ABS. This enclosure has bevelled corners, and is made of a body. Its simple yet elegant design is perfect for large assemblies. It has a recessed lid for large membrane keypads or labels. Also, its large size makes it perfect for devices which need a screen or a display. Each unit includes M3 locking and circuit fixing screws (either in the body or the lid). Black



PP40 model, a case made of highly resistant ABS. Its snap fit locking mechanisms ensures quicker locking which does not require screws. This enclosure has slightly rounded corners, and has a body and a lid. It is designed for small electronic assemblies. Its simple design makes it tough enough to guarantee the protection of the electronics in it. Black

Part Number	Dimensions
PP33 GRY	125 x 67 x 41mm

Part Number	Dimensions
PP37 BLK	200 x 112 x 31mm

Part Number	Dimensions
PP40 BLK	50 x 36 x 20mm



PP42 model, a case made in highly resistant ABS. This enclosure has slightly smoothed corners, and has a body and a lid. It is designed for sensors, thermostats, or alarms, and has vents in both sides. Black



PP50 model, a case made in ABS and Noryl for the skirting base. ROHS compliant. It has an 8 pin connector assembled by 2 clips. Machined Contacts Black



PP50 model, a case made in ABS and Noryl for the skirting base. ROHS compliant. It has an 11 pin connector assembled by 2 clips. Machined Contacts Black

Part Number	Dimensions
PP42 BLK	71 x 71 x 27mm

Part Number	Dimensions
PP50 BLK	78 x 48 x 48mm

Part Number	Dimensions
PP50U BLK	78 x 48 x 48mm





PP56 model, a case made in highly resistant ABS. It has a snap fit locking mechanism which ensures quicker locking without requiring screws. This enclosure has slightly smoothed corners, and has a body and a lid. It is perfect for small electronic assemblies. Its simple design makes it tough enough to guarantee the protection of the electronics in it. Black

Part Number	Dimensions
PP56 BLK	58 x 35 x 21mm



A case made in highly resistant ABS. This enclosure has slightly rounded corners, and has a body and a lid. Its size is perfect for manually operated devices. Its lid is decorated with a trim edge. It includes a battery terminal for a 9V battery or 2 1.5V batteries, which can be accessed externally by a lid. It includes 4 battery compartments and has a vent grille. Each unit includes circuit fixing screws. Ivory

Part Number	Dimensions
PP5A IVORY	131 x 60 x 29mm



A case made in highly resistant ABS. This enclosure has bevelled corners. Its design is simple, elegant, and perfect for assemblies which require a lot of space. It has a recessed panel designed to adhere keypads or large cases on to it. Its large surface makes it perfect for devices which require a screen or display. Each unit includes locking and circuit fastening screws (body or lid). Black

Part Number	Dimensions
PP61B BLK	125 x 67 x 40mm



PP78 model, a case made in highly resistant ABS. This high quality enclosure stands out because of its modern design and its innovative line. It is perfect for handheld devices with a frontal membrane keyboard. Its handy assembly by means of 4 security screws is also perfect for handheld devices. Each unit includes locking and circuit fixing screws, and also battery terminals. Black

Part Number	Dimensions
PP78 BLK	144 x 90 x 30mm



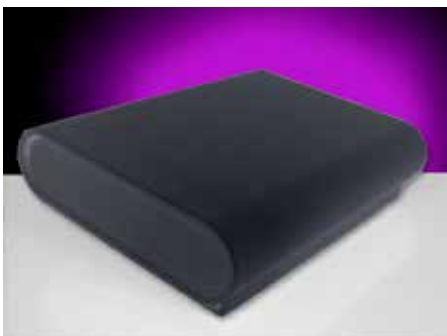
A case made in highly resistant ABS. This enclosure has slightly rounded corners, and has a body and a lid. Its size is perfect for manually operated devices. Its lid is decorated with a trim edge. It includes a 9V battery terminal which can be accessed externally by a lid. It includes 2 battery compartments and has a vent grille. Each unit includes circuit fixing screws. Ivory

Part Number	Dimensions
PP7A IVORY	127 x 47 x 24mm



PP7A model, a case made in highly resistant ABS. This enclosure has slightly rounded corners, and has a body and a lid. Its size is perfect for manually operated devices. Its lid is decorated with a trim edge. It includes a 9V battery terminal which can be accessed externally by a lid. It includes 2 battery compartments and has a vent grille. Each unit includes circuit fixing screws. Black

Part Number	Dimensions
PP7A BLK	127 x 47 x 24mm



PP62 model, a case made of highly resistant ABS. This simple yet elegant oval shaped enclosure is perfect for mid-sized desktop devices. It has a base on which it rests, and is made of 2 snap fit parts, the body and the lid. Black

Part Number	Dimensions
PP62 BLK	139 x 110 x 31mm



PP83 model, a case made of highly resistant ABS. This square enclosure has round corners, and is perfect for compact devices. A simple yet elegant box with a snap-fit locking mechanism. Black

Part Number	Dimensions
PP83N BLK	69 x 69 x 37mm



PP9 model, a case made in highly resistant ABS. This enclosure has slightly rounded corners, and has a body and a lid. It has plenty of space inside and a considerable height. Each unit includes circuit fixing screws. Black

Part Number	Dimensions
PP9 BLK	121 x 56 x 42mm

## Filters and fans

Side or door mounting

For the ventilation of control cabinets, enclosures and housings

- Grey - RAL7035
- Filter mats for dust collection
- FK55 series offers low shape and quick mounting, with a distinct curved modern styling.
- IP54 as standard , optional rain cover required to reach IP55



Filter and fan	Exit filter	Cutout dimensions (W x H)	External dimensions (W x H)	Air Flow no Filter m <sup>3</sup> /hr	Air Flow with Filter m <sup>3</sup> /hr
FK5521.230	FK5521.300	92x92	109x109	35	24/27
FK5522.230	FK5522.300	125x125	150x150	67	50/58
FK5523.230	FK5523.300	177x177	204x204	105	85/100
FK5525.230	FK5525.300	223x223	250x250	230	170/230
FK5526.230	FK5526.300	291x291	325x325	550	360/490
FK5527.230	FK5527.300	291x291	325x325	650	500/600

## Thermostats

Suitable for heating and cooling applications

- Sensor Element: Bi-metal
- Adjustment Range: 0-60°C
- Contact Rating: 6A 250V AC
- Dimensions: 60H x 33W x 35D (mm)
- Connections: 2 pole screw terminal 2.5mm<sup>2</sup>



Part Number	Description
KTO 011	Heating Control (red)
KTS 011	Cooling Control (blue)

## Ventilators

Part Number	Description
DS-VH-40	Ventilator for 40mm hole
DS-VH-50	Ventilator for 50mm hole
DS-VH-60	Ventilator for 60mm hole



# Cable Glands

## Nylon Cable Gland

(Supplied with Locknut)

Part Number	Thread	Thread Length (mm)	Cable Clamping Range (mm)	Pack Qty
HSK-M12B-L	M12	10	3-6.5	100
HSK-M16B-DL	M16	10	5-10	100
HSK-M20B-DL	M20	10	8-14	100
HSK-M25B-L	M25	12	13-18	50
HSK-M32B-L	M32	12	18-25	25
HSK-M40B	M40	15	22-30	25
HSK-M50B	M50	15	30-38	10



## EMC Brass Cable Gland

(Locknut to be ordered separately)

Part Number	Thread	Thread Length (mm)	Cable Clamping Range (mm)	Pack Qty
HSM-EMVSC-M16L	M16	10	4-8	50
HSM-EMVSC-M20L	M20	10	7-12	50
HSM-EMVSC-M25L	M25	12	11-16	25
HSM-EMVSC-M32L	M32	12	15-21	20
HSM-EMVSC-M40L	M40	15	21-30	10
HSM-EMVSC-M50L	M50	15	30-38	10
HSM-EMVSC-M63L	M63	15	38-53	5

Part Number (EMC Brass Locknuts)	Pack Qty
GME-M16	50
GME-M20	50
GME-M25	25
GME-M32	25
GME-M40	25
GME-M50	20
GME-M63	20



## Brass Cable Gland

(Locknut to be ordered separately)

Part Number	Thread	Thread Length (mm)	Cable Clamping Range (mm)	Pack Qty
HSM-M12-L	M12	10	3-6.5	50
HSM-M16-DL	M16	10	5-10	50
HSM-M20-DL	M20	10	8-14	50
HSM-M25-DL	M25	12	13-18	25
HSM-M32-DL	M32	12	18-25	20
HSM-M40-L	M40	15	22-30	10
HSM-M50-L	M50	15	30-38	10
HSM-M63-L	M63	15	37-44	5

Part Number (Brass Locknuts)	Pack Qty
GM-M12	50
GM-M16	50
GM-M20	50
GM-M25	25
GM-M32	20
GM-M40	20
GM-M50	20
GM-M63	20



## Brass Thread Enlarger

Part Number	Thread Conversion	Pack Qty
EWM-M16/M20	M16 to M20	50
EWM-M20/M25	M20 to M25	50
EWM-M25/M32	M25 to M32	25
EWM-M32/M40	M32 to M40	25
EWM-M40/M50	M40 to M50	20





**Switches Plus Components Pty Ltd**  
242 Governor Road, Braeside, VIC, 3195  
**Phone:** 03 8587 3200  
**Email:** [sales@switchesplus.com.au](mailto:sales@switchesplus.com.au)

V 16.5.13.1