

## LP30M Pushbuttons

Rugged start/stop switches for vehicles in demanding applications



The LP30M offers rugged, sealed construction with LED illumination in a large, 30mm diameter button that is ideal for start/stop operation. This precision, snap-action switch is designed for long life in off-highway, material handling, industrial controls, marine, medical and other demanding applications.

- **Low-profile dome or concave-style button in translucent white, red or amber**
- **Six standard LED colors: red, green, amber, blue, deep green and white**
- **Button can be laser etched or pad printed with words or legends**
- **Anodized aluminum housing can be laser etched with words or legends that will not fade or wear with continuous use**
- **Snap-action mechanism provides tactile feedback**
- **Normal Open (NO) or Two-Circuit (NO/NC) configurations**
- **Accommodates 2, 12 and 24VDC power; includes reverse voltage protection**
- **Switch works at logic level as well as up to 5A resistive**
- **Watertight to IP68S or moistureproof and dusttight to IP64**
- **Withstands -40°C to 85°C operating temperatures**
- **Includes hardware**

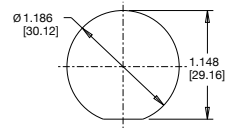
## LP30M-

STOP HERE FOR SWITCHES WITHOUT LEGENDS

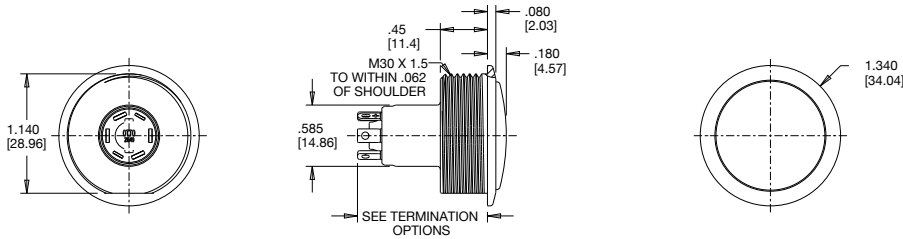
BUTTON & CASE STYLE	CIRCUIT/RATING/TERMINATION	LIGHT SOURCE TYPE *	SEAL LEVEL	OPERATING FORCE	CASE COLOR	BUTTON COLOR	LEGEND
A. LOW PROFILE DOME, SMALL DIA CASE, NO PANEL SEAL OPTION	1. SPST N.O., STD CURRENT, SDR TERM, MOMENTARY	A. 2V RED LED B. 2V GREEN LED C. 2V AMBER LED G. 12V RED LED H. 12V GREEN LED J. 12V AMBER LED K. 24V RED LED L. 24V GREEN LED M. 24V AMBER LED	1. DUSTTIGHT 2. WATERTIGHT	2. 2.5±.5 LBS. 4. 4±1 LBS.	1. SILVER 2. BLACK	A. TRANSPARENT AMBER R. TRANSLUCENT RED * W. TRANSLUCENT WHITE B. TRANSLUCENT WHITE PAINTED BLACK FOR BACKLIT LEGEND	THE CHARACTERS ARE ABSENT FROM THE PART NUMBER IF THERE IS NO LEGEND. CHARACTERS CORRESPOND TO OTTO ENGINEERING CODE FOR SAE GRAPHIC SPECIFICATION AS DEFINED IN THE OTTO ENGINEERING CATALOG. THE LEGEND WILL BE WHITE ON AMBER AND RED BUTTONS AND BLACK ON WHITE BUTTONS.
B. LOW PROFILE DOME, STD DIA CASE, WITH PANEL SEAL OPTION	3. SPST N.O., LOW-LOGIC LEVEL, SDR TERM, MOMENTARY	N. 2V BLUE LED Q. 12V BLUE LED R. 24V BLUE LED S. 2V DEEP GREEN LED U. 12V DEEP GREEN LED V. 24V DEEP GREEN LED W. 2V WHITE LED X. 12V WHITE LED Y. 24V WHITE LED					
C. CONCAVE BUTTON, SMALL DIA CASE, NO PANEL SEAL OPTION	4. SPDT 2-CIRCUIT, LOW-LOGIC LEVEL, SDR TERM, MOMEN.						
D. CONCAVE BUTTON, STD DIA CASE, WITH PANEL SEAL OPTION	5. SPDT 2-CIRCUIT, STD CURRENT, 48±3 INCH, 20 AWG LEADS, MOMENTARY 6. SPDT 2-CIRCUIT, LOW-LOGIC LEVEL, 48±3 INCH, 24 AWG LEADS, MOMENTARY						

\* ALL GREEN AND BLUE LEDS ARE RECOMMENDED FOR USE WITH TRANSLUCENT BUTTON COLOR (WHITE) ONLY. DUE TO THE LOWER INTENSITY OF AMBER LED'S, THE AMBER BUTTON IS TRANSPARENT (SEE THROUGH), INSTEAD OF TRANSLUCENT.

### RECOMMENDED PANEL CUTOUT

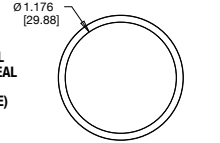


BUTTON AND CASE STYLE 'A' (NO PANEL SEAL)

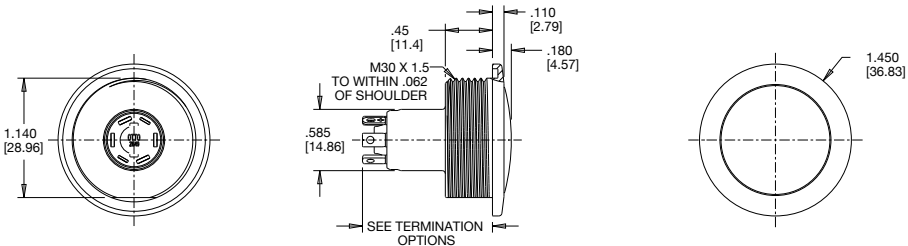


### MOUNTING HARDWARE

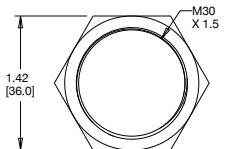
OPTIONAL PANEL SEAL O-RING (SILICONE)



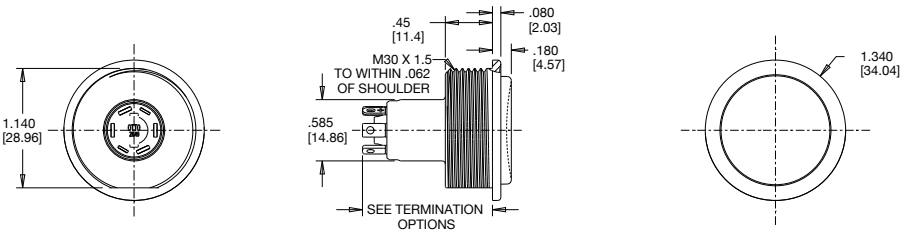
BUTTON AND CASE STYLE 'B' (WITH PANEL SEAL)



HEX NUT

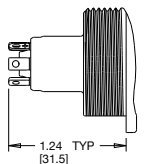


BUTTON AND CASE STYLE 'C' (NO PANEL SEAL)

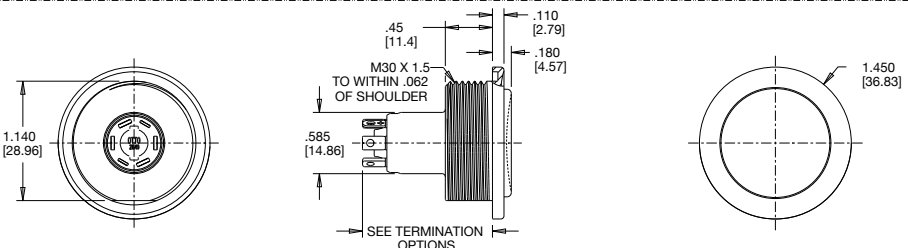


### TERMINATION OPTIONS

STANDARD SOLDER TERMINALS



BUTTON AND CASE STYLE 'D' (WITH PANEL SEAL)



WIRED TERMINATION

WIRE COLORS:  
N.C.: GREEN (2)  
N.O.: WHITE (2)  
LED +: RED (1)  
LED -: BLUE (1)

