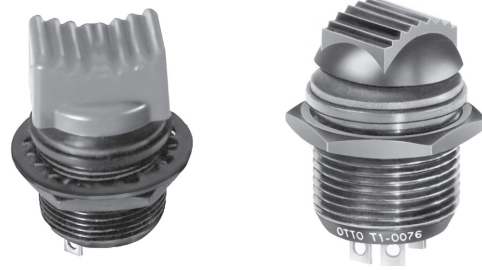
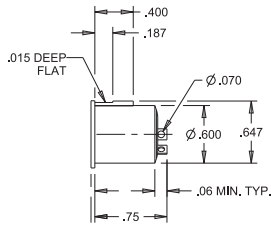


## 2-WAY MINI TRIM, COMMERCIAL & MILITARY GRADES

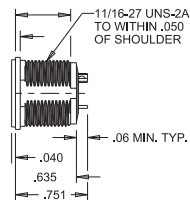
The T1 Mini Trim is a single pole, double throw, center off, momentary contact (self return to center off) switch. Numerous button styles are available on both the Commercial and Military grade switch versions. Mini Trims are typically press fit into control grips or panel mounted using versions with an 11/16" threaded case. Mini Trims are also available with multiple sealing levels to fit all applications.



### Typical Dimensions

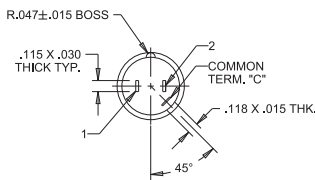


Press Fit

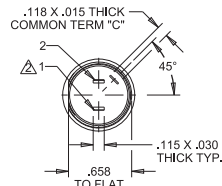


Threaded Body

### T1



Press Fit



Threaded Body

### Standard Characteristics/Ratings:

#### ELECTRICAL RATINGS:

Load	Rating
Resistive	10mA @ 5VDC (logic level)
Inductive	1A @ 28VDC
DWV	1050Vrms
Logic Level	10mA Resistive @ 5VDC
<b>Electrical Life:</b>	100,000 cycles 1A Inductive @ 28VDC
<b>Lever Travel:</b>	15° max from center OFF
<b>Seal:</b>	IP64 or IP68S or MIL-PRF-8805 Design 3
<b>Operating Temp Range:</b>	-55°C to +85°C
<b>Operating Force:</b>	16 oz +/- 6 oz
<b>Lever Pivot &amp; Stop Strength:</b>	Switch is capable of withstanding a force of 25.0 lbs. applied to the actuating button. The button also withstands 15.0 lbs. minimum pull force.

#### MATERIALS:

<b>Case:</b>	Aluminum alloy or thermoplastic
<b>Button:</b>	Thermoplastic
<b>Terminals:</b>	Silver over brass Gold over silver over brass for logic level
<b>Terminal Hardware:</b>	None provided
<b>Mounting Hardware:</b>	Hex nut, tooth lockwasher and panel gasket where applicable

### T1 MINI TRIM PART NUMBER CODE

Series	Grade	Button Style	Case Style	Seal Level	Current Rating	Button Color*
T1	-	X	X	X	X	X
T1. 2-Way	C. Commercial M. Military	A. 2-Way Jog B. Tall Jog C. Rocker D. Cone E. LRUD Hat F. IOUD Hat G. Hat H. Stadium J. Castle K. 4-Way Jog L. Short Bat M. Bat N. Post P. 4-40 Threaded Post Q. Rotated Stadium	1. Press Fit 2. Threaded	1. IP64 Dusttight 2. IP68S Watertight 3. Design Symbol 3 Watertight per MIL-PRF-8805 and Meets Environmental Testing per MIL-DTL-9419	1. Standard 2. Logic Level	1. Red 2. Black 8. Gray N. Not Applicable**

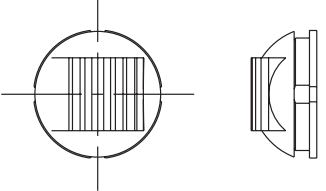
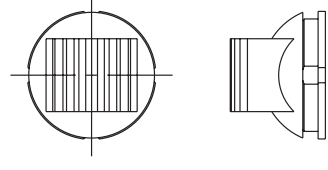
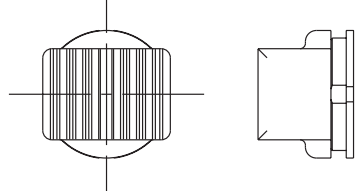
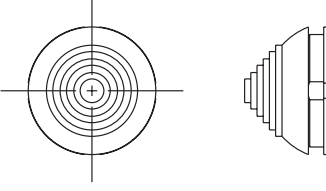
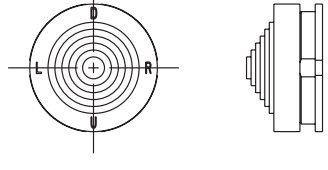
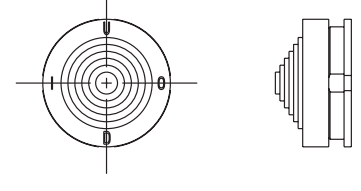
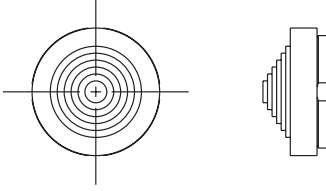
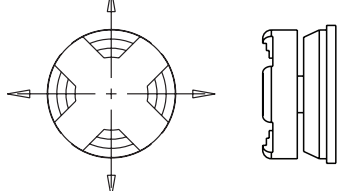
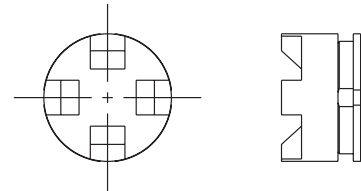
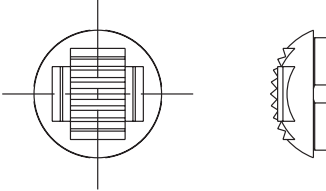
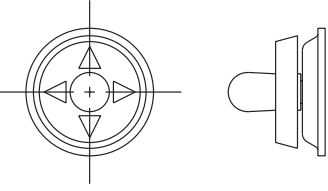
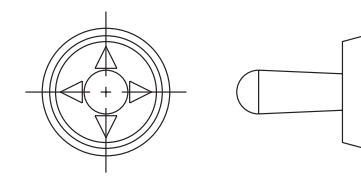
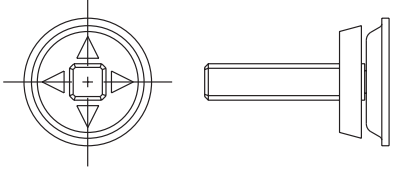
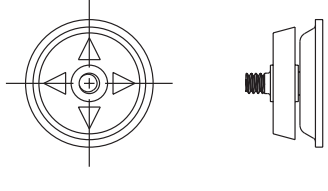
\* Contact factory for additional button colors.

\*\* Use when specifying button styles L, M, N and P.

T1 Mini Trim Button Styles are shown on the Button Styles page and in the appendix.

# T1, T2, T4, T5 & T8 MINI TRIM BUTTON STYLES

## T1, T2, T4, T5 AND T8 MINI TRIM BUTTON STYLES

<p><b>A - 2-WAY JOG</b></p> 	<p><b>B - TALL JOG</b></p> 	<p><b>C - ROCKER</b></p> 
<p><b>D - CONE</b></p> 	<p><b>E - LRUD HAT</b></p> 	<p><b>F - IOUD HAT</b></p> 
<p><b>G - HAT</b></p> 	<p><b>H - STADIUM</b></p> 	<p><b>J - CASTLE</b></p> 
<p><b>K - 4-WAY JOG</b></p> 	<p><b>L - SHORT BAT</b></p> 	<p><b>M - LONG BAT</b></p> 
<p><b>N - POST</b></p> 	<p><b>P - 4-40 THREADED POST</b></p> 	<p><b>Q - ROTATED STADIUM</b></p> 