

ULTRA SMALL SUBMINIATURE BASICS

SINGLE BREAK, SNAP-ACTION, COMMERCIAL & MILITARY GRADES, ULTRA SMALL SUBMINIATURE

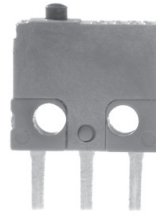
The B1 series basic switches are ultra-subminiature in size, designed to reliably switch logic level signals as well as up to 2 amps switching capacity for a minimum of 25,000 cycles. Mechanical life expectancy is in excess of one million cycles.

The molded housing is rugged and structurally stable. The terminals are molded-in and sealed against solder flux entering the switch. The terminals are available in a choice of double turret solder style and 0.020" x 0.025" PC pins.

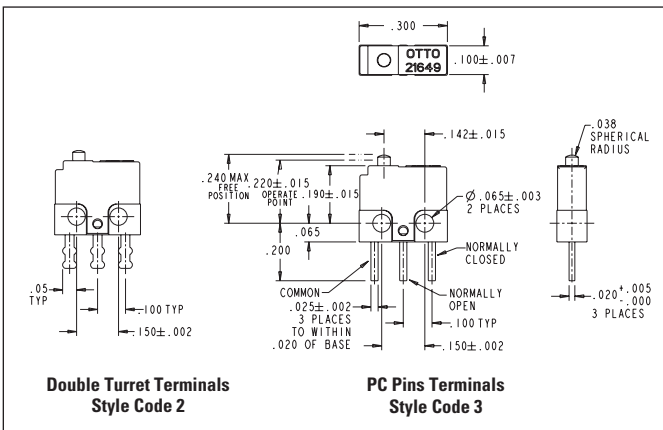
The B1 series is also available with integral lever actuators as B1-5 series.

Features:

- **Ultra-compact: only 0.300" w x 0.255" h x 0.100" thick**
- **1 million cycle life, B1-5 Series**
- **Logic level switching capability**
- **Designed in accordance with MIL-PRF-8805/94**
- **Available in Commercial & Military grades**
- **Choice of solder or PC molded-in terminals**
- **Precision operating points**
- **Momentary action**
- **RoHS compliant**



Actual Size



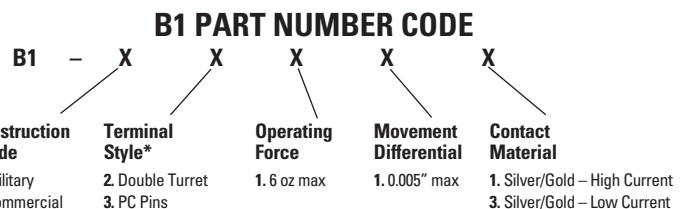
| Standard Characteristics/Ratings: | | |
|-----------------------------------|---|----------------------------|
| ELECTRICAL RATINGS: | | |
| Load | Sea Level @ 28VDC or 115VAC, 60Hz | 50,000 feet @ 28VDC |
| Resistive | 2A | 2A |
| Inductive* | 0.5A | 0.2A |
| DWV | 1000Vrms | 400Vrms |
| Logic Level | 10mA @ 5VDC | 10mA @ 5VDC |
| *L/R = 0.026 | | |
| Electrical Life: | 25,000 cycles | |
| Mechanical Life: | B1 Series is 100,000 cycles (B1-5 Series is 1,000,000 cycles) | |
| Seal: | Unsealed | |
| Operating Temp Range: | -55°C to +125°C | |
| Operating Force: | 6 oz max | |
| Release Force: | 0.7 oz min | |
| Operate Point: | 0.220 +/- 0.015 inches from mounting holes | |
| Overtravel: | 0.003 inches min | |
| Movement Differential: | 0.002 inches nominal, 0.005 inches max | |
| Pretravel: | 0.015 inches max | |
| MATERIALS: | | |
| Case: | Thermoset, blue | |
| Cover: | Thermoplastic, blue | |
| Button: | Thermoplastic, black | |
| Terminals: | Silver with gold | |
| Contacts: | Stationary: Silver with gold Moveable: Silver with gold | |
| Terminal Hardware: | None provided | |
| Mounting Hardware: | None provided | |

ORDERING INFORMATION:

B1 Basic

Select the OTTO B1 basic switch to match your specific circuit and mechanical requirements. To order, specify your requirement using the OTTO Part Number Code shown below.

Example: B1-12111 specifies Military grade construction, double turret terminals, 6 oz max operating force and silver/gold high current contacts.



* Wire leads available, contact factory.