



Separated counter nut, Thread type: metric, Material: PA 6.6, Colour: Black

**RAL:** 9005

### Kaufmännische Daten

Artikelnummer	<u>28617.4</u>
Artikelbezeichnung	KDS-GM 25 BK
GTIN (EAN)	4044211209001
Packaging unit	10
Quantity unit	PC
Weight per piece (not including packaging)	3 g
Weight per piece (including packaging)	3.4 g
Unit of weight	G
Customs number	39269097
Country of origin	DE
Product description	Cable gland
Colour	Black

### Technische Daten

#### Dimensions

Length	36 mm
Width	36 mm
Height	7 mm
Installation height	7 mm

#### Thread

Thread type	Metric
Thread size	25 mm
Thread pitch	1.5 mm
Thread length (L)	7 mm

#### Materials

Material	Polyamide 6.6
Glass-fibre reinforced	✓
Flammability class UL 94	V-0
Working temperature, min.	-40 °C
Working temperature, max.	120 °C
Halogen-free	✓
Silicone-free	✓

#### Further technical data

Mounting type	Screws
Spanner width (AF)	33 mm
Hexagonal corner size	36 mm
Torque for the locknut	3 Nm

#### Environmental Product Compliance

REACH Conform	yes
REACH Reference date	2023-06-14
REACH Candidate Substance Note	No
RoHS Conform	yes

---

### Zulassungen

---

#### cUL Recognized

---

cUL approval	C22.2 No. 14-18
--------------	-----------------

---

cUL File Number	E489821
-----------------	---------

---

cUL Recognized	1
----------------	---

---

#### UL Recognized

---

UL approval	UL 508A
-------------	---------

---

UL File Number	E489821
----------------	---------

---

UL Recognized	1
---------------	---

---

---

### Medien

---



### Zubehör

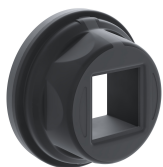
#### Separable cable gland



Split cable gland including counter nut, Thread type: metric, Material: PA 6.6, Protection: IP 66, Colour: Black

Artikelnummer	Artikelbezeichnung	GTIN (EAN)	VPE
<u>28611.4</u>	KDS-KV M25 BK	4044211208943	10 ST

#### ##INVERSE##CONTA-CABLE



Round cable entry, Material: polyamide PA 6.6, glass-fibre reinforced | TPE, Colour: Black

Artikelnummer	Artikelbezeichnung	GTIN (EAN)	VPE
<u>28770.4</u>	KDS-R 20-32 BK	4044211234508	5 ST



Thread and locking adapter, Material: Polyamide PA 6.6, glass-fibre reinforced, Colour: Black

Artikelnummer	Artikelbezeichnung	GTIN (EAN)	VPE
<u>28772.4</u>	KDS-RGA M25 BK	4044211234522	5 ST