

Switch Box

Plastic Bolt Type for Opening/Closing – IP67

Switch Box



► It weighs a fourth as much as steel box and is convenient for carrying or working. No corrosion and excellent insulation.

► It is an excellent product that passed a thorough waterproof, dustproof impact-resistant test.

► It is useful for the usages such as DIN-Rail and button box, small terminal, signal device, measuring equipment, communication connection box, etc and is easy to mount.

Materials & Composition Table

A G

•Material:ABS
•Color: Gray

A T

•Material:Cover(PC), Body(ABS)
•Color: Cover(Clear), Body(Gray)

P G

•Material:AC Flammability
•Color: Gray

P T

•Material:Cover(PC), Body(AC)
•Color: Cover(Clear), Body(Gray)

P C G

•Material:POLYESTER
•Color: Gray

P C T

•Material:Cover(PC), Body(POLYESTER)
•Color: Cover(Clear), Body(Gray)

ABS:Acrylonitrile Butadiene Styrene

P C:PolyCarbonate

Polyester : PBT+PC

AC:ABS(30%)+PC(70%)

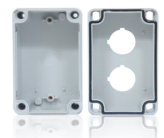
► SWITCH BOX Product has 6 product names as shown above and can be made of any of 4 materials shown above. SWITCH BOX Product acquired IP67 Grade on each product manufactured by any of 4 materials.

Part Number	Dimensions(mm)			INCH	Others
	W	H	D		
DS-000-0506-S	50	65	35	1.97 × 2.56 × 1.38	
DS-000-0506	50	65	55	1.97 × 2.56 × 2.17	
DS-000-0808	80	82	60	3.15 × 3.23 × 2.36	
DS-000-0712	75	125	75	2.92 × 4.92 × 2.92	
DS-000-0712-1	75	125	100	2.92 × 4.92 × 3.94	
DS-000-0712-2	75	125	125	2.92 × 4.92 × 4.92	
DS-000-0811-S	80	110	45	3.15 × 4.33 × 1.77	
DS-000-0811-S1	80	110	60	3.15 × 4.33 × 2.36	
DS-000-0811	80	110	70	3.15 × 4.33 × 2.76	
DS-000-0811-1	80	110	85	3.15 × 4.33 × 3.35	
DS-000-0813	80	130	70	3.15 × 5.12 × 2.76	
DS-000-0813-1	80	130	85	3.15 × 5.12 × 3.35	
DS-000-0816-S	80	160	55	3.15 × 6.30 × 2.17	
DS-000-0816	80	160	90	3.15 × 6.30 × 3.54	
DS-000-0818	80	180	70	3.15 × 7.09 × 2.76	
DS-000-0818-1	80	180	85	3.15 × 7.09 × 3.35	
DS-000-0820	80	200	70	3.15 × 7.09 × 2.76	
DS-000-0825	80	250	70	3.15 × 9.84 × 2.76	
DS-000-0825-1	80	250	85	3.15 × 9.84 × 3.35	
DS-000-1010-S	100	100	75	3.93 × 3.93 × 2.95	
DS-000-1010	100	100	100	3.93 × 3.93 × 3.93	
DS-000-1212-S	125	125	75	4.92 × 4.92 × 2.92	
DS-000-1212	125	125	100	4.92 × 4.92 × 3.94	
DS-000-1217	125	175	75	4.92 × 6.89 × 2.92	
DS-000-1217-1	125	175	100	4.92 × 6.89 × 3.94	
DS-000-1417	140	170	95	5.51 × 6.69 × 3.74	
DS-000-1123	110	230	70	4.33 × 9.06 × 2.76	
DS-000-1423	140	230	95	5.51 × 9.06 × 3.74	
DS-000-1515	150	150	100	5.91 × 5.91 × 3.94	
DS-000-1520-S	150	200	75	5.91 × 7.87 × 2.95	
DS-000-1520	150	200	100	5.91 × 7.87 × 3.94	
DS-000-1520-S1	150	200	105	5.91 × 7.87 × 4.13	
DS-000-1520-1	150	200	130	5.91 × 7.87 × 5.12	
DS-000-1520-B	150	200	130	5.91 × 7.87 × 5.12	
DS-000-1520-B1	150	200	160	5.91 × 7.87 × 6.30	
DS-000-1525	150	250	100	5.91 × 9.84 × 3.94	
DS-000-1525-1	150	250	130	5.91 × 9.84 × 5.12	
DS-000-1525-B	150	250	130	5.91 × 9.84 × 5.12	
DS-000-1525-B1	150	250	160	5.91 × 9.84 × 6.30	
DS-000-1717	175	175	75	6.89 × 6.89 × 2.92	
DS-000-1717-1	175	175	100	6.89 × 6.89 × 3.94	
DS-000-1717-2	175	175	125	6.89 × 6.89 × 4.92	
DS-000-1725	175	250	75	6.89 × 9.84 × 2.92	
DS-000-1725-1	175	250	100	6.89 × 9.84 × 3.94	
DS-000-2020-S	200	200	95	7.87 × 7.87 × 3.74	
DS-000-2020	200	200	130	7.87 × 7.87 × 5.12	
DS-000-2020-B	200	200	160	7.87 × 7.87 × 6.30	
DS-000-0811(A1)(D1)	80	110	70	3.15 × 4.33 × 2.76	
DS-000-0813(D2)	80	130	70	3.15 × 5.12 × 4.33	
DS-000-0818(D3)	80	180	70	3.15 × 7.09 × 3.35	
DS-000-0825(D4)	80	250	70	3.15 × 9.84 × 3.35	
DS-000-0811-1(B1)(C1)	80	110	85	3.15 × 4.33 × 3.35	
DS-000-0813-1(A2)(B3)(C2)	80	130	85	3.15 × 5.12 × 3.35	
DS-000-0818-1(A3)(BC)(C3)	80	180	85	3.15 × 7.09 × 3.35	
DS-000-0825-1(A4)(B4)(C4)	80	250	85	3.15 × 9.84 × 3.35	

※Products such as A1, A2, A3, A4, B1, B2, B3, B4, C1, C2, C3, C4, D1, D2, D3 and D4 from above products list are products processed only on the cover.

- OOO mark of product at the above product list is to express a material.
- Materials : AG, AT, PG, PT, PCG, PCT
- Please refer to Material Composition Diagram by Products on Page 13.

A1 Ø30.5mm 1Hole	/ A2 Ø30.5mm 2Hole	/ A3 Ø30.5mm 3Hole	/ A4 Ø30.5mm 4Hole
B1 Ø22.5mm 1Hole	/ B2 Ø22.5mm 2Hole	/ B3 Ø22.5mm 3Hole	/ B4 Ø22.5mm 4Hole
C1 Ø25.0mm 1Hole	/ C2 Ø25.0mm 2Hole	/ C3 Ø25.0mm 3Hole	/ C4 Ø25.0mm 4Hole
D1 Ø25.0mm 1Hole	/ D2 Ø25.0mm 2Hole	/ D3 Ø25.0mm 3Hole	/ D4 Ø25.0mm 4Hole



Switch Box

SUS draw latch Type for Opening/Closing- IP67

Switch Box



►It weighs a fourth as much as steel box and is convenient for carrying or working. No corrosion and excellent insulation.

►It is an excellent product that passed a thorough waterproof, dustproof impact-resistant test.

►It is useful for the usages such as DIN-Rail and button box, small terminal, signal device, measuring equipment, communication connection box, etc and is easy to mount.

Materials & Composition Table

A G

•Material:ABS
•Color: Gray

A T

•Material:Cover(PC), Body(ABS)
•Color: Cover(Clear), Body(Gray)

P G

•Material:AC Flammability
•Color: Gray

P T

•Material:Cover(PC), Body(AC)
•Color: Cover(Clear), Body(Gray)

P C G

•Material:POLYESTER
•Color: Gray

P C T

•Material:Cover(PC), Body(POLYESTER)
•Color: Cover(Clear), Body(Gray)

ABS:Acrylonitrile Butadiene Styrene

P C:PolyCarbonate

Polyester : PBT+PC

AC:ABS(30%)+PC(70%)

►SWITCH BOX Product has 6 product names as shown above and can be made of any of 4 materials shown above. SWITCH BOX Product acquired IP67 Grade on each product manufactured by any of 4 materials.

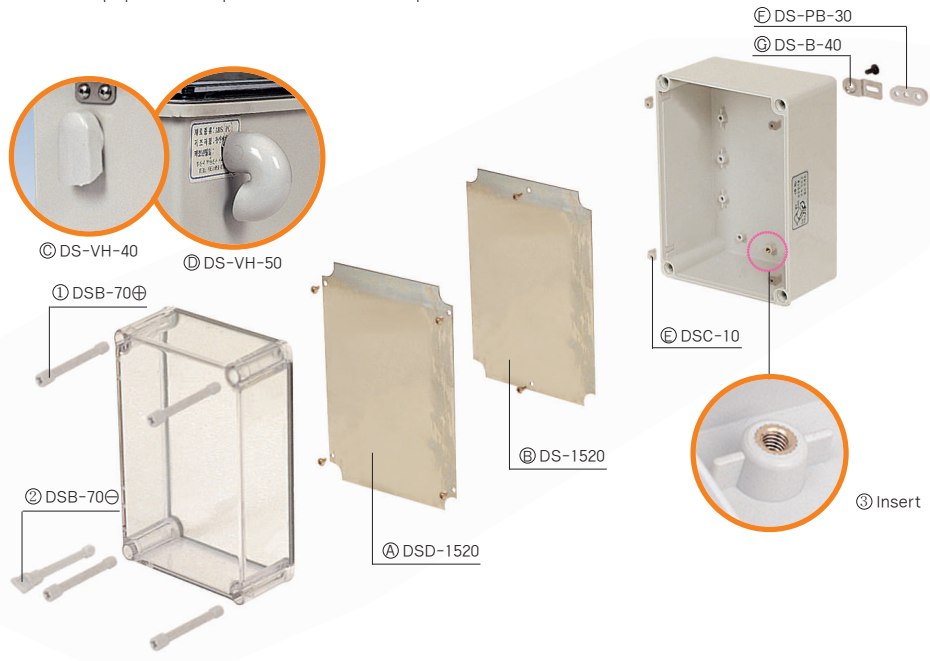
Part Number	Dimensions(mm)			INCH	Others
	W	H	D		
DS-000H-0712	75	125	75	2.92 × 4.92 × 2.92	
DS-000H-0712-1	75	125	100	2.92 × 4.92 × 3.94	
DS-000H-0712-2	75	125	125	2.92 × 4.92 × 4.92	
DS-000H-0811-S	80	110	45	3.15 × 4.33 × 1.77	
DS-000H-0811-S1	80	110	60	3.15 × 4.33 × 2.36	
DS-000H-0811	80	110	70	3.15 × 4.33 × 2.76	
DS-000H-0811-1	80	110	85	3.15 × 4.33 × 3.35	
DS-000H-0813	80	130	70	3.15 × 5.12 × 2.76	
DS-000H-0813-1	80	130	85	3.15 × 5.12 × 3.35	
DS-000H-0816-S	80	160	55	3.15 × 6.30 × 2.17	
DS-000H-0816	80	160	90	3.15 × 6.30 × 3.54	
DS-000H-0818	80	180	70	3.15 × 7.09 × 2.76	
DS-000H-0818-1	80	180	85	3.15 × 7.09 × 3.35	
DS-000H-0820	80	200	70	3.15 × 7.09 × 2.76	
DS-000H-0825	80	250	70	3.15 × 9.84 × 2.76	
DS-000H-0825-1	80	250	85	3.15 × 9.84 × 3.35	
DS-000H-1010-S	100	100	75	3.93 × 3.93 × 2.95	
DS-000H-1010	100	100	100	3.93 × 3.93 × 3.93	
DS-000H-1212-S	125	125	75	4.92 × 4.92 × 2.92	
DS-000H-1212	125	125	100	4.92 × 4.92 × 3.94	
DS-000H-1217	125	175	75	4.92 × 6.89 × 2.92	
DS-000H-1217-1	125	175	100	4.92 × 6.89 × 3.94	
DS-000H-1417	140	170	95	5.51 × 6.69 × 3.74	
DS-000H-1123	110	230	70	4.33 × 9.06 × 2.76	
DS-000H-1423	140	230	95	5.51 × 9.06 × 3.74	
DS-000H-1515	150	150	100	5.91 × 5.91 × 3.94	
DS-000H-1520-S	150	200	75	5.91 × 7.87 × 2.95	
DS-000H-1520	150	200	100	5.91 × 7.87 × 3.94	
DS-000H-1520-S1	150	200	105	5.91 × 7.87 × 4.13	
DS-000H-1520-1	150	200	130	5.91 × 7.87 × 5.12	
DS-000H-1520-B	150	200	130	5.91 × 7.87 × 5.12	
DS-000H-1520-B1	150	200	160	5.91 × 7.87 × 6.30	
DS-000H-1525	150	250	100	5.91 × 9.84 × 3.94	
DS-000H-1525-1	150	250	130	5.91 × 9.84 × 5.12	
DS-000H-1525-B	150	250	130	5.91 × 9.84 × 5.12	
DS-000H-1525-B1	150	250	160	5.91 × 9.84 × 6.30	
DS-000H-1717	175	175	75	6.89 × 6.89 × 2.92	
DS-000H-1717-1	175	175	100	6.89 × 6.89 × 3.94	
DS-000H-1717-2	175	175	125	6.89 × 6.89 × 4.92	
DS-000H-1725	175	250	75	6.89 × 9.84 × 2.92	
DS-000H-1725-1	175	250	100	6.89 × 9.84 × 3.94	
DS-000H-2020-S	200	200	95	7.87 × 7.87 × 3.74	
DS-000H-2020	200	200	130	7.87 × 7.87 × 5.12	
DS-000H-2020-B	200	200	160	7.87 × 7.87 × 6.30	

- 000 mark of product at the above product list is to express a material.
- Materials : AG, AT, PG, PT, PCG, PCT
- Please refer to Material Composition Diagram by Products on Page 13.

Switch Box

Assembly Drawing

• The Equipment is possible to all the products of HI BOX.



■DS-AT-1520-1

- Aluminum panel can be fitted
- Screw type is a basic specification

Accessories



Bracket



DS-PB-40/30



DS-VH-40



DS-VH-50



DS-VH-60/DS-VH-80
(75×75mm) (100×100mm)



DSK-40



DS-PK-20



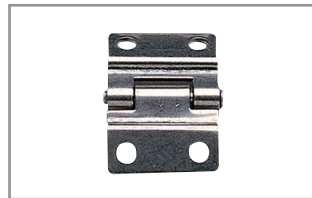
DSK-20



DSK-20M



DSM-45



DSH-35



DSB-25 ⊕⊖



DSC-10

■ Please refer to Accessories List on Page 56~60.

Switch Box Drawing Information

Division Model	H1	H2	H3	H4	W1	W2	W3	D1	D2
DS-0506-S	67	58	52	38	53	42	37	25	10
DS-0506	65	59	52	40	50	44	37	35	20
DS-0808	82	76	70	55	79	74	68	45	15
DS-0712	125	120	107	90	75	70	57	52	25
DS-0712-1	125	120	107	90	75	70	57	52	50
DS-0712-2	125	120	107	90	75	70	57	52	75
DS-0811-S	110	104	92	80	80	74	62	25	20
DS-0811	110	104	92	80	80	74	62	50	20
DS-0811-1	110	104	92	80	80	74	62	50	35
DS-0813	130	124	112	100	80	74	62	50	20
DS-0813-1	130	124	112	100	80	74	62	50	35
DS-0816-S	162	156	145	136	82	75	66	40	15
DS-0816	162	156	145	136	82	75	66	75	15
DS-0818	180	174	162	150	80	74	62	50	20
DS-0818-1	180	174	162	150	80	74	62	50	35
DS-0820	180	174	162	150	80	74	62	50	35
DS-0825	250	244	232	220	80	74	62	50	20
DS-0825-1	250	244	232	220	80	74	62	50	35
DS-1010	100	91	80	68	100	91	80	80	20
DS-1010-S	100	91	80	68	100	91	80	55	20
DS-1212-S	125	117	105	70	125	117	105	55	20
DS-1212	125	117	105	70	125	117	105	80	20
DS-1217	175	167	157	140	127	121	109	49	25
DS-1217-1	175	167	157	140	127	121	109	49	50
DS-1417	170	162	152	130	140	132	122	75	20
DS-1123	230	222	205	182	110	103	91	57	55
DS-1423	230	220	212	190	140	132	122	60	75
DS-1515	150	139,5	131	109,5	150	139,5	131	80	20
DS-1520-S	200	190	182	160	150	139	132	52	25
DS-1520	200	190	182	160	150	139	132	80	20
DS-1520-1	200	190	182	160	150	139	132	80	50
DS-1520-B	200	190	182	160	150	139	132	110	20
DS-1520-B1	200	190	182	160	150	139	132	110	50
DS-1525	250	240	232	210	150	140	132	80	20
DS-1525-1	250	240	232	210	150	140	132	80	50
DS-1525-B	250	240	232	210	150	140	132	110	20
DS-1525-B1	250	240	232	210	150	140	132	110	50
DS-1717	175	170	157	140	175	170	157	52	25
DS-1717-1	175	170	157	140	175	170	157	52	50
DS-1717-2	175	170	157	140	175	170	157	52	75
DS-1725	250	245	232	211	175	170	157	52	25
DS-1725-1	250	245	232	211	175	170	157	52	50
DS-2020-S	200	193	182	120	200	193	182	75	20
DS-2020	200	193	182	120	200	193	182	110	20
DS-2020-B	201	193,5	182	120	201	193,5	182	140	20

Steel Mounting Plate

Product	mm W×H×D	inch W×H×D	MODEL
DS-000-0506	55 × 40 × 1,6	2,17 × 1,57 × 0,06	DS-0506
DS-000-0712(-1,-2)	106 × 60 × 1,6	4,17 × 2,36 × 0,06	DS-0712
DS-000-0808	71 × 65 × 1,6	2,79 × 2,56 × 0,06	DS-0808
DS-000-0811-S	93 × 63 × 1,6	3,66 × 2,48 × 0,06	DS-0811-S
DS-000-0811(-1)	96,5 × 68 × 1,6	3,80 × 2,68 × 0,06	DS-0811
DS-000-0813(-1)	116 × 68 × 1,6	4,57 × 2,68 × 0,06	DS-0813
DS-000-0816(-S)	150 × 65 × 1,6	5,91 × 2,56 × 0,06	DS-0816
DS-000-0818(-1)	165,5 × 68 × 1,6	6,52 × 2,68 × 0,06	DS-0818
DS-000-0820	165,5 × 68 × 1,6	6,52 × 2,68 × 0,06	DS-0820
DS-000-0825(-1)	235 × 68 × 1,6	9,25 × 2,68 × 0,06	DS-0825
DS-000-1010(-S)	88 × 88 × 1,6	3,46 × 3,46 × 0,06	DS-1010
DS-000-1212(-S)	99 × 99 × 1,6	3,90 × 3,90 × 0,06	DS-1212
DS-000-1217(-1)	157 × 99 × 1,6	6,18 × 3,90 × 0,06	DS-1217
DS-000-1417	156 × 124 × 1,6	6,14 × 4,88 × 0,06	DS-1417
DS-000-1423	212 × 122 × 1,6	8,35 × 4,80 × 0,06	DS-1423
DS-000-1520(-1,-S,B,B1)	186 × 136 × 1,6	7,32 × 5,35 × 0,06	DS-1520
DS-000-1525(-1,B,B1)	235,5 × 136 × 1,6	9,27 × 5,35 × 0,06	DS-1525
DS-000-1717(-1,-2)	161 × 161 × 1,6	6,34 × 6,34 × 0,06	DS-1717
DS-000-1725(-1)	235 × 165 × 1,6	9,25 × 6,50 × 0,06	DS-1725
DS-000-2020(-S,-B)	187 × 187 × 1,6	7,36 × 7,36 × 0,06	DS-2020



Plastic Mounting Plate

Product	mm W×H×D	inch W×H×D	MODEL
DS-000-0811(-S,-1)	96,5 × 68 × 3,5	3,80 × 2,68 × 0,14	DS-0811 P/L
DS-000-0813(-1)	116 × 68 × 3,5	4,57 × 2,68 × 0,14	DS-0813 P/L
DS-000-0818(-1)	165,5 × 68 × 3,5	6,52 × 2,68 × 0,14	DS-0818 P/L
DS-000-0825(-1)	235 × 68 × 3,5	9,25 × 2,68 × 0,14	DS-0825 P/L
DS-000-1010(-S)	88 × 88 × 1,6	3,46 × 3,46 × 0,06	DS-1010 P/L
DS-000-1515	124 × 124 × 3,75	4,48 × 4,48 × 0,15	DS-1515 P/L
DS-000-1520(-1,-S,B,B1)	186 × 136 × 3,0	7,32 × 5,35 × 0,12	DS-1520 P/L
DS-000-1525(-1,-B,-B1)	235 × 136 × 3,7	9,25 × 5,35 × 0,15	DS-1525 P/L
DS-000-2020(-S)	187 × 187 × 3,3	7,36 × 7,36 × 0,13	DS-2020 P/L
DS-000-0712(-1,-2)	112 × 57 × 3,9	4,41 × 2,24 × 0,15	DS-0712 P/L
DS-000-1212(-s)	107 × 107 × 4,0	4,21 × 4,21 × 0,16	DS-1212 P/L
DS-000-1417	149 × 119 × 4,0	5,87 × 4,68 × 0,16	DS-1417 P/L
DS-000-1423	211 × 121 × 4,0	8,31 × 4,76 × 0,16	DS-1423 P/L
DS-000-1717(-1,-2)	159 × 159 × 4,0	6,26 × 6,26 × 0,16	DS-1717 P/L
DS-000-1725(-1)	230 × 157 × 4,0	9,05 × 6,18 × 0,16	DS-1725 P/L
DS-000-1217(-1)	107 × 119 × 4,0	4,21 × 4,68 × 0,16	DS-1217 P/L

Dimension

(Allowable error: ± 1mm)

