

Terminal Box

Plastic Bolt Type for Opening/Closing – IP67



► It is made of ABS, PC and non-flammable materials that have a good exterior, excellent processing performance and strength.

► As a conventional plastic box, it is a popular product that is approved by various standard organization such as TUV of Germany, VDE, CE of European Union and Consumer Association.

► It is convenient for the general & mechanical usages such as terminal box, measuring equipment box, gauge box, power distribution, control box, etc.

Materials & Composition Table

A G

•Material:ABS
•Color: Gray

A T

•Material:Cover(PC), Body(ABS)
•Color: Cover(Clear), Body(Gray)

P G

•Material:AC Flammability
•Color: Gray

P T

•Material:Cover(PC), Body(AC)
•Color: Cover(Clear), Body(Gray)

P C G

•Material:POLYESTER
•Color: Gray

P C T

•Material:Cover(PC), Body(POLYESTER)
•Color: Cover(Clear), Body(Gray)

ABS:Acrylonitrile Butadiene Styrene

P C:PolyCarbonate

Polyester : PBT+PC

AC:ABS(30%)+PC(70%)

► **TERMINAL BOX** Product has 6 product names as shown above and can be made of any of 4 materials shown above. **TERMINAL BOX** Product acquired IP67 Grade on each product manufactured by any of 4 materials.

Part Number	Dimensions(mm)			INCH	Others
	W	H	D		
DS-000-1919	190	190	130	7.48×7.48×5.12	
DS-000-2819	280	190	130	11.02×7.48×5.12	
DS-000-2819-1	280	190	180	11.02×7.48×7.09	
DS-000-2819-B	280	190	180	11.02×7.48×7.09	
DS-000-2819-B1	280	190	230	11.02×7.48×9.05	
DS-000-2819-1M	280	190	155	11.02×7.48×6.10	
DS-000-3819	380	190	130	14.96×7.48×5.12	
DS-000-3819-1	380	190	180	14.96×7.48×7.09	
DS-000-3819-B	380	190	180	14.96×7.48×7.09	
DS-000-3819-B1	380	190	230	14.96×7.48×9.05	
DS-000-2828	280	280	130	11.02×11.02×5.12	
DS-000-3428	340	280	130	13.39×11.02×5.12	
DS-000-3828	380	280	130	14.96×11.02×5.12	
DS-000-3828-1	380	280	180	14.96×11.02×7.09	
DS-000-3828-B	380	280	180	14.96×11.02×7.09	
DS-000-3828-B1	380	280	230	14.96×11.02×9.05	
DS-000-5628	560	280	130	22.05×11.02×5.12	
DS-000-5638	560	380	180	22.05×14.96×7.09	

■ 000 mark of product at the above product list is to express a material.

■ Materials : AG, AT, PG, PT, PCG, PCT

■ Please refer to Material Composition Diagram by Products on Page 13.

Terminal Box

SUS draw latch Type for Opening/Closing – IP67



►It is made of ABS, PC and non-flammable materials that have a good exterior, excellent processing performance and strength.

►As a conventional plastic box, it is a popular product that is approved by various standard organization such as TUV of Germany, VDE, CE of European Union and Consumer Association.

►It is convenient for the general & mechanical usages such as terminal box, measuring equipment box, gauge box, power distribution, control box, etc.

Materials & Composition Table

A G	•Material:ABS •Color: Gray	A T	•Material:Cover(PC), Body(ABS) •Color: Cover(Clear), Body(Gray)
P G	•Material:AC Flammability •Color: Gray	P T	•Material:Cover(PC), Body(AC) •Color: Cover(Clear), Body(Gray)
P C G	•Material:POLYESTER •Color: Gray	P C T	•Material:Cover(PC), Body(POLYESTER) •Color: Cover(Clear), Body(Gray)

ABS:Acrylonitrile Butadiene Styrene

P C:PolyCarbonate

Polyester : PBT+PC

AC:ABS(30%)+PC(70%)

►TERMINAL BOX Product has 6 product names as shown above and can be made of any of 4 materials shown above. TERMINAL BOX Product acquired IP67 Grade on each product manufactured by any of 4 materials.

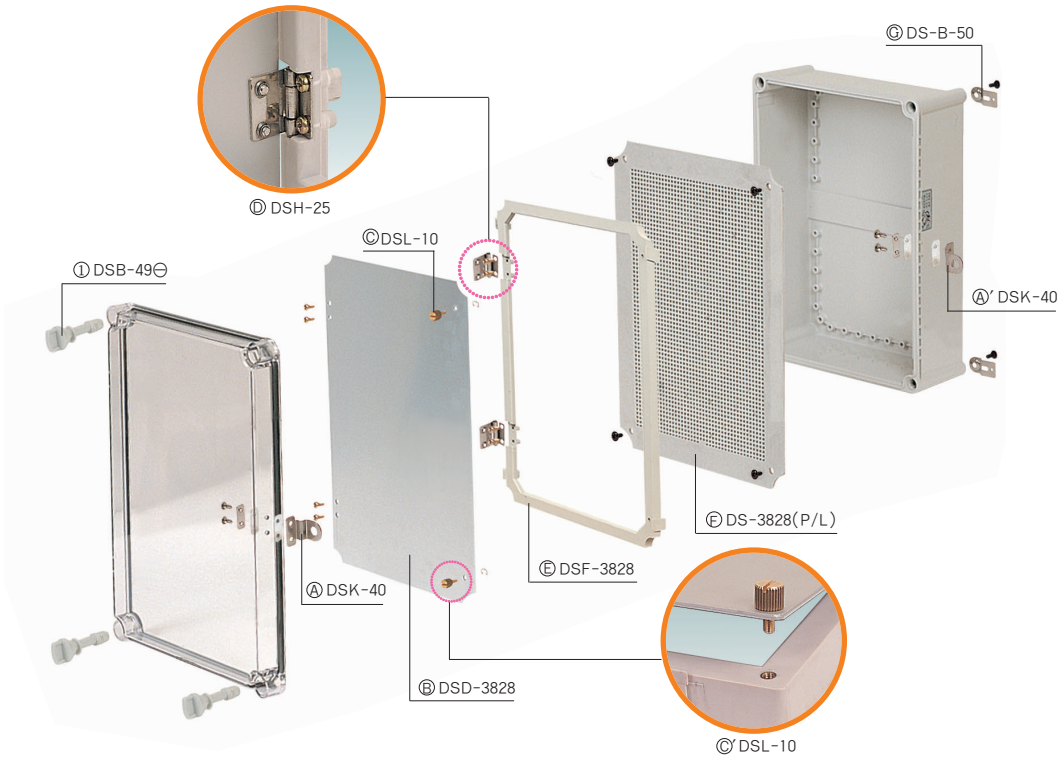
Part Number	Dimensions(mm)			Inch	Others
	W	H	D		
DS-000H-1919	190	190	130	7.48×7.48×5.12	
DS-000H-2819	190	280	130	7.48×11.02×5.12	
DS-000H-2819-1	190	280	180	7.48×11.02×7.09	
DS-000H-2819-B	190	280	180	7.48×11.02×7.09	
DS-000H-2819-B1	190	280	230	7.48×11.02×9.05	
DS-000H-2819-1M	190	280	155	7.48×11.02×6.10	
DS-000H-1928	280	190	130	11.02×7.48×5.12	
DS-000H-1928-1	280	190	180	11.02×7.48×7.09	
DS-000H-1928-B	280	190	180	11.02×7.48×7.09	
DS-000H-1928-B1	280	190	230	11.02×7.48×9.05	
DS-000H-1928-1M	280	190	155	11.02×7.48×6.10	
DS-000H-3819	190	380	130	7.48×14.96×5.12	
DS-000H-3819-1	190	380	180	7.48×14.96×7.09	
DS-000H-3819-B	190	380	180	7.48×14.96×7.09	
DS-000H-3819-B1	190	380	230	7.48×14.96×9.05	
DS-000H-1938	380	190	130	14.96×7.48×5.12	
DS-000H-1938-1	380	190	180	14.96×7.48×7.09	
DS-000H-1938-B	380	190	180	14.96×7.48×7.09	
DS-000H-1938-B1	380	190	230	14.96×7.48×9.05	
DS-000H-2828	280	280	130	11.02×11.02×5.12	
DS-000H-3428	280	340	130	11.02×13.39×5.12	
DS-000H-2834	340	280	130	13.39×11.02×5.12	
DS-000H-3828	280	380	130	14.96×11.02×5.12	
DS-000H-3828-1	280	380	180	14.96×11.02×7.09	
DS-000H-3828-B	280	380	180	14.96×11.02×7.09	
DS-000H-3828-B1	280	380	230	14.96×11.02×9.05	
DS-000H-2838	280	380	130	11.02×14.96×5.12	
DS-000H-2838-1	280	380	180	11.02×14.96×7.09	
DS-000H-2838-B	280	380	180	11.02×14.96×7.09	
DS-000H-2838-B1	280	380	230	11.02×14.96×9.05	
DS-000H-5628	280	560	130	11.02×22.05×5.12	
DS-000H-5638	380	560	180	14.96×22.02×5.12	
DS-000H-2856	560	280	130	22.05×11.02×5.12	
DS-000H-3856	560	380	180	22.05×14.96×7.09	

■ 000 mark of product at the above product list is to express a material.

■ Materials : AG, AT, PG, PT, PCG, PCT

■ Please refer to Material Composition Diagram by Products on Page 13.

Terminal Box Assembly Drawing



■ DS-PT-3828

- Screw type is a basic specification
- Aluminum panel was equipped utilized by multipurpose Frame.
- Plastic panel equipped which is convenient to install the equipments without a basic plan.
- ① -Basic specification
- ④~⑥-Optional specification

Accessories



Bracket



DSB-49 ⊕⊖



DS-VH-40



DS-VH-50



DS-VH-60/DS-VH-80
(75×75mm) (100×100mm)



DSK-40



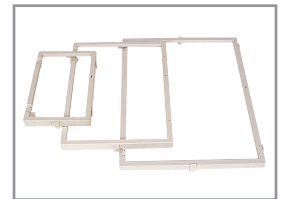
DS-PK-20



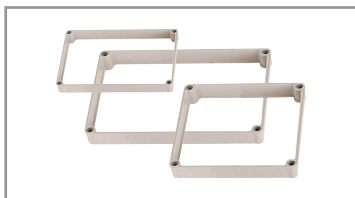
DSK-20



DSK-20M



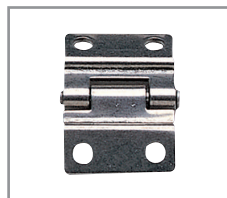
DSF-1928,2828,3828 etc



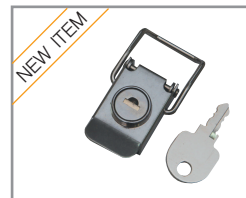
EF-□□-1919, 2828, 3828,
5628, 5638



DSM-55



DSH-50



DSM-65K



DSM-65K

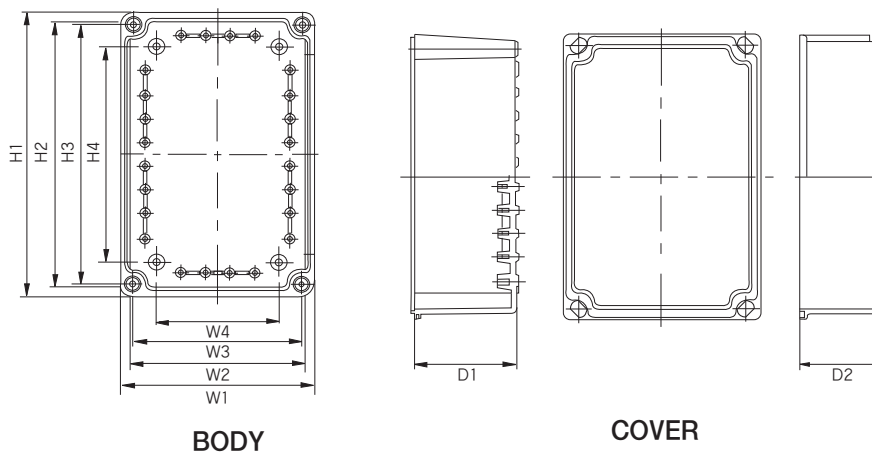
■ Please refer to Accessories List on Page 56~60.

Terminal Box Drawing Information

Model \ Division	H1	H2	H3	H4	W1	W2	W3	W4	D1	D2
DS - 1919	190	174	165	120	190	174	165	120	98	30
DS - 2819	280	266	255	210	190	170	165	120	98	30
DS - 2819-1	280	266	255	210	190	170	165	120	98	80
DS - 2819-B	280	266	255	210	190	170	165	120	148	30
DS - 2819-B1	280	266	255	210	190	170	165	120	148	80
DS - 2819-1M	280	266	255	210	190	170	165	120	98	55
DS - 2828	280	260	255	210	280	260	255	210	98	30
DS - 3428	341	320	316	270	280	260	256	210	100	30
DS - 3828	380	359	355	310	280	259	255	210	98	30
DS - 3828-1	380	359	355	310	280	259	255	210	98	80
DS - 3828-B	380	359	355	310	280	259	255	210	148	30
DS - 3828-B1	380	359	355	310	280	259	255	210	148	80
DS - 3819	382	366	355	310	192	172	165	120	98	30
DS - 3819-1	382	366	355	310	192	172	165	120	98	80
DS - 3819-B	382	366	355	310	192	172	165	120	148	30
DS - 3819-B1	382	366	355	310	192	172	165	120	148	80
DS - 5628	560	540	535	490	280	260	255	220	98	30
DS - 5638	560	540	535	490	380	360	355	311	148	30

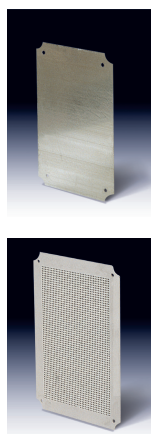
Dimension

(Allowable error: ± 1mm)



Steel Mounting Plate

Product	mm W×H×D	inch W×H×D	MODEL
DS-000-1919	161 × 161 × 1.6	6.34 × 6.34 × 0.06	DS-1919
DS-000-2819(-1,-B,-B1,-1M)	251.5 × 161 × 1.6	9.90 × 6.34 × 0.06	DS-2819
DS-000-3819(-1,-B,-B1)	352.5 × 161 × 1.6	13.88 × 6.34 × 0.06	DS-3819
DS-000-2828	251 × 251 × 1.6	9.88 × 9.88 × 0.06	DS-2828
DS-000-3428	312 × 251 × 1.6	12.28 × 9.88 × 0.06	DS-2834
DS-000-3828(-1,-B,-B1)	351 × 251 × 1.6	13.82 × 9.88 × 0.06	DS-2838
DS-000-5628	254.5 × 532 × 1.6	10.02 × 20.94 × 0.06	DS-5628
DS-000-5638	345.5 × 532 × 1.6	13.60 × 20.94 × 0.06	DS-5638



Plastic Mounting Plate

Product	mm W×H×D	inch W×H×D	MODEL
DS-000-1919	160 × 160 × 4	6.30 × 6.30 × 0.16	DS-1919 P/L
DS-000-2819(-1,-B,-B1,-1M)	252 × 161 × 3.4	9.84 × 6.34 × 0.13	DS-2819 P/L
DS-000-3819(-1,-B,-B1)	155 × 335 × 4	6.10 × 13.19 × 0.16	DS-3819 P/L
DS-000-2828	267 × 267 × 3.3	10.51 × 10.51 × 0.13	DS-2828 P/L
DS-000-3428	240 × 300 × 4	9.45 × 11.81 × 0.16	DS-2834 P/L
DS-000-3828(-1,-B,-B1)	351 × 251 × 4.3	13.78 × 9.88 × 0.17	DS-2838 P/L