



Connecting sleeve, Colour: Orange

### Business data

Article number	<u>2873.3</u>
Article name	VBS 2/10 OG
GTIN (EAN)	4044211055981
Packaging unit	20
Quantity unit	PC
Weight per piece (not including packaging)	0.4 g
Weight per piece (including packaging)	0.42 g
Unit of weight	G
Customs number	85389099
Country of origin	DE
Product description	Connecting sleeve
Colour	Orange

---

### Technical data

---

#### Dimensions

Width	16 mm
-------	-------

---

#### Materials

Insulation housing	Polyamide 6.6
--------------------	---------------

---

Flammability class UL 94	V-2
--------------------------	-----

---

Working temperature, min.	-40 °C
---------------------------	--------

---

Working temperature, max.	105 °C
---------------------------	--------

---

#### Environmental Product Compliance

REACH Conform	yes
---------------	-----

---

REACH Reference date	2023-01-17
----------------------	------------

---

REACH Candidate Substance Note	No
--------------------------------	----

---

RoHS Conform	yes
--------------	-----

---

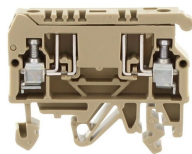
---

### Media

---

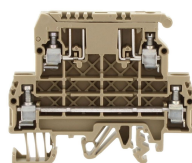
### Accessories

#### Terminal blocks



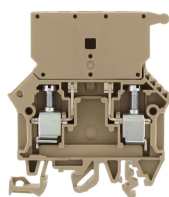
Fuse-disconnect terminal, Screw connection, Mounting type: Mounting rail TS 35/7.5 and TS 32, Rated cross-section: 4 mm<sup>2</sup>, Width: 8 mm, Colour: Beige

Article number	Article name	GTIN (EAN)	Packaging unit
<a href="#">1078.2</a>	STK 2 BG	4044211013745	100



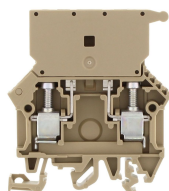
Fuse-disconnect terminal, Screw connection, Mounting type: Mounting rail TS 35/7.5 and TS 32, Rated cross-section: 4 mm<sup>2</sup>, Width: 8 mm, Colour: Beige

Article number	Article name	GTIN (EAN)	Packaging unit
<a href="#">1079.2</a>	STKD 1 BG	4044211013905	50



Fused terminal with disconnect plug, Screw connection, Mounting type: Mounting rail TS 35/7.5 and TS 32, Rated cross-section: 10 mm<sup>2</sup>, Width: 8 mm, Colour: Beige

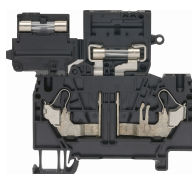
Article number	Article name	GTIN (EAN)	Packaging unit
<a href="#">17042.2</a>	SIK 10/ST BG	4044211155797	25



Fuse-disconnect terminal, Screw connection, Mounting type: Mounting rail TS 35/7.5 and TS 32, Rated cross-section: 10 mm<sup>2</sup>, Width: 8 mm, Colour: Beige

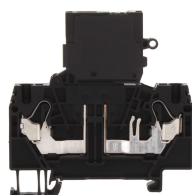
Article number	Article name	GTIN (EAN)	Packaging unit
<a href="#">1101.2</a>	SIK 10 BG	4044211016388	50

#### ##INVERSE##CONTA-CONNECT



Fuse-disconnect terminal, Push-in connection, Mounting type: Mounting rail TS 35/7.5, Rated cross-section: 4 mm<sup>2</sup>, Width: 6 mm, Colour: Black

Article number	Article name	GTIN (EAN)	Packaging unit
<a href="#">3290.4</a>	FSIK 4/2A BK	4044211180287	25 ST



Fuse-disconnect terminal, Push-in connection, Mounting type: Mounting rail TS 35/7.5, Rated cross-section: 4 mm<sup>2</sup>, Width: 6 mm, Colour: Black

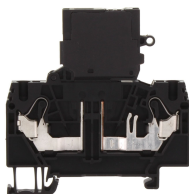
Article number	Article name	GTIN (EAN)	Packaging unit
<a href="#">3291.4</a>	FSIK 4/2A/LED 12-30V AC/DC BK	4044211188962	25 ST

### ##INVERSE##CONTA-CONNECT



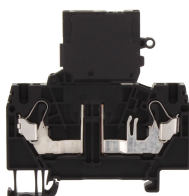
Disconnect-blade terminal, Push-in connection, Mounting type: Mounting rail TS 35/7.5, Rated cross-section: 4 mm<sup>2</sup>, Width: 6.1 mm, Colour: Black

Article number	Article name	GTIN (EAN)	Packaging unit
<u>3239.4</u>	FSIK 4/2A/MT BK	4044211209933	50 ST



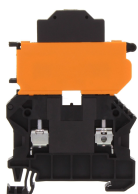
Fuse-disconnect terminal, Push-in connection, Mounting type: Mounting rail TS 35/7.5, Rated cross-section: 4 mm<sup>2</sup>, Width: 6 mm, Colour: Black

Article number	Article name	GTIN (EAN)	Packaging unit
<u>3292.4</u>	FSIK 4/2A/LED 30-60V AC/DC BK	4044211188979	25 ST



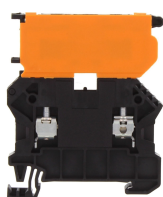
Fuse-disconnect terminal, Push-in connection, Mounting type: Mounting rail TS 35/7.5, Rated cross-section: 4 mm<sup>2</sup>, Width: 6 mm, Colour: Black

Article number	Article name	GTIN (EAN)	Packaging unit
<u>3293.4</u>	FSIK 4/2A/LED 110-250V AC/DC BK	4044211188986	25 ST



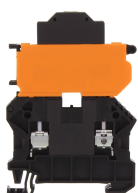
Fuse-disconnect terminal, Screw connection, Mounting type: Mounting rail TS 35/7.5, Rated cross-section: 4 mm<sup>2</sup>, Width: 6.1 mm, Colour: Black

Article number	Article name	GTIN (EAN)	Packaging unit
<u>17172.4</u>	SSIK 4/2A/LED 30-60V AC/DC BK	4044211180447	25 ST



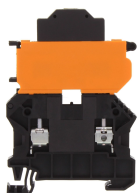
Fuse-disconnect terminal, Screw connection, Mounting type: Mounting rail TS 35/7.5, Rated cross-section: 4 mm<sup>2</sup>, Width: 6.1 mm, Colour: Black

Article number	Article name	GTIN (EAN)	Packaging unit
<u>17150.4</u>	SSIK 4/2A BK	4044211179816	50 ST



Fuse-disconnect terminal, Screw connection, Mounting type: Mounting rail TS 35/7.5, Rated cross-section: 4 mm<sup>2</sup>, Width: 6.1 mm, Colour: Black

Article number	Article name	GTIN (EAN)	Packaging unit
<u>17171.4</u>	SSIK 4/2A/LED 12-30V AC/DC BK	4044211180430	25 ST



Fuse-disconnect terminal, Screw connection, Mounting type: Mounting rail TS 35/7.5, Rated cross-section: 4 mm<sup>2</sup>, Width: 6.1 mm, Colour: Black

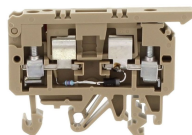
Article number	Article name	GTIN (EAN)	Packaging unit
<u>17173.4</u>	SSIK 4/2A/LED 110-250V AC/DC BK	4044211180454	25 ST

### ##INVERSE##CONTA-CONNECT



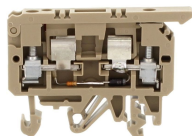
Fuse-disconnect terminal, Screw connection, Mounting type: Mounting rail TS 35/7.5, Rated cross-section: 4 mm<sup>2</sup>, Width: 6.1 mm, Colour: Black

Article number	Article name	GTIN (EAN)	Packaging unit
<a href="#">17174.4</a>	SSIK 4/2A/LED 500V AC/DC BK	4044211180461	25 ST



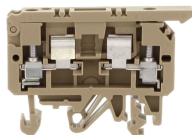
Fuse-disconnect terminal, Screw connection, Mounting type: Mounting rail TS 35/7.5 and TS 32, Rated cross-section: 4 mm<sup>2</sup>, Width: 8 mm, Colour: Beige

Article number	Article name	GTIN (EAN)	Packaging unit
<a href="#">2451.2</a>	STK 1/LED(RD)/60V DC BG	4044211052416	100 ST



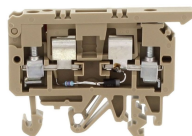
Fuse-disconnect terminal, Screw connection, Mounting type: Mounting rail TS 35/7.5 and TS 32, Rated cross-section: 4 mm<sup>2</sup>, Width: 8 mm, Colour: Beige

Article number	Article name	GTIN (EAN)	Packaging unit
<a href="#">2457.2</a>	STK 1/LED(RD)/115V AC BG	4044211052478	100 ST



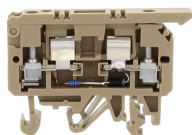
Fuse-disconnect terminal, Screw connection, Mounting type: Mounting rail TS 35/7.5 and TS 32, Rated cross-section: 4 mm<sup>2</sup>, Width: 8 mm, Colour: Beige

Article number	Article name	GTIN (EAN)	Packaging unit
<a href="#">2190.2</a>	STK 1 BG	4044211050115	100



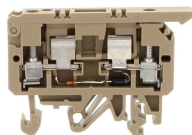
Fuse-disconnect terminal, Screw connection, Mounting type: Mounting rail TS 35/7.5 and TS 32, Rated cross-section: 4 mm<sup>2</sup>, Width: 8 mm, Colour: Beige

Article number	Article name	GTIN (EAN)	Packaging unit
<a href="#">2452.2</a>	STK 1/LED(RD)/115V DC BG	4044211052423	100 ST



Fuse-disconnect terminal, Screw connection, Mounting type: Mounting rail TS 35/7.5 and TS 32, Rated cross-section: 4 mm<sup>2</sup>, Width: 8 mm, Colour: Beige

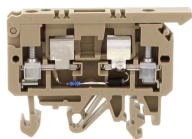
Article number	Article name	GTIN (EAN)	Packaging unit
<a href="#">2454.2</a>	STK 1/LED(RD)/24V AC BG	4044211052447	100 ST



Fuse-disconnect terminal, Screw connection, Mounting type: Mounting rail TS 35/7.5 and TS 32, Rated cross-section: 4 mm<sup>2</sup>, Width: 8 mm, Colour: Beige

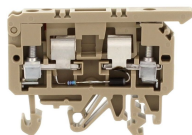
Article number	Article name	GTIN (EAN)	Packaging unit
<a href="#">2455.2</a>	STK 1/LED(RD)/48V AC BG	4044211052454	100 ST

### ##INVERSE##CONTA-CONNECT



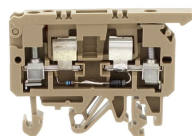
Fuse-disconnect terminal, Screw connection, Mounting type:Mounting rail TS 35/7.5 and TS 32, Rated cross-section: 4 mm<sup>2</sup>, Width: 8 mm, Colour: Beige

Article number	Article name	GTIN (EAN)	Packaging unit
<u>2449.2</u>	STK 1/LED(RD)/24V DC BG	4044211052393	100 ST



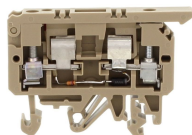
Fuse-disconnect terminal, Screw connection, Mounting type:Mounting rail TS 35/7.5 and TS 32, Rated cross-section: 4 mm<sup>2</sup>, Width: 8 mm, Colour: Beige

Article number	Article name	GTIN (EAN)	Packaging unit
<u>2453.2</u>	STK 1/LED(RD)/230V DC BG	4044211052430	100 ST



Fuse-disconnect terminal, Screw connection, Mounting type:Mounting rail TS 35/7.5 and TS 32, Rated cross-section: 4 mm<sup>2</sup>, Width: 8 mm, Colour: Beige

Article number	Article name	GTIN (EAN)	Packaging unit
<u>2458.2</u>	STK 1/LED(RD)/230V AC BG	4044211052485	100 ST



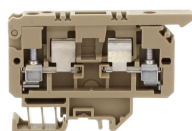
Fuse-disconnect terminal, Screw connection, Mounting type:Mounting rail TS 35/7.5 and TS 32, Rated cross-section: 4 mm<sup>2</sup>, Width: 8 mm, Colour: Beige

Article number	Article name	GTIN (EAN)	Packaging unit
<u>2456.2</u>	STK 1/LED(RD)/60V AC BG	4044211052461	100 ST



Fused terminal, Screw connection, Mounting type:Mounting rail TS 35/7.5 and TS 32, Rated cross-section: 10 mm<sup>2</sup>, Width: 8 mm, Colour: Black

Article number	Article name	GTIN (EAN)	Packaging unit
<u>17364.4</u>	SIK 10 PA-G BK	4044211178406	50 ST



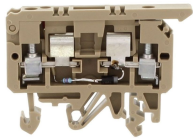
Fuse-disconnect terminal, Screw connection, Mounting type: Mounting rail TS 15/5.5, Rated cross-section: 4 mm<sup>2</sup>, Width: 8 mm, Colour: Beige

Article number	Article name	GTIN (EAN)	Packaging unit
<u>2191.2</u>	STK 1/15 BG	4044211050160	100

---

### ##INVERSE##CONTA-CONNECT

---



Fuse-disconnect terminal, Screw connection, Mounting type:Mounting rail TS 35/7.5 and TS 32, Rated cross-section: 4 mm<sup>2</sup>, Width: 8 mm, Colour: Beige

Article number	Article name	GTIN (EAN)	Packaging unit
<u>2450.2</u>	STK 1/LED(RD)/48V DC BG	4044211052409	100 ST

---