

28504.4 KDS-SR 10/24 BK



Cable entry with foamed-in seal, Mounting type: Screws, Length: 153 mm, Width: 70 mm, IP 66, Colour: Black

RAL: 9005

Business data

| | |
|--|-----------------|
| Article number | 28504.4 |
| Article name | KDS-SR 10/24 BK |
| GTIN (EAN) | 4044211210809 |
| Packaging unit | 1 |
| Quantity unit | PC |
| Weight per piece (not including packaging) | 68.2 g |
| Weight per piece (including packaging) | 95.2 g |
| Unit of weight | G |
| Customs number | 39259020 |
| Country of origin | DE |
| Product description | Cable Entry |
| Colour | Black |

Technical data

Dimensions

| | |
|-----------------------------|----------|
| Length | 153 mm |
| Length of wall cutout | 113.5 mm |
| Width | 70 mm |
| Width of wall cutout | 46 mm |
| Height | 19.6 mm |
| Installation height | 19.6 mm |
| Diameter of the screw holes | 5.5 mm |

Materials

| | |
|---------------------------|-----------------------------------|
| Material | Polyamide 6.6 |
| Glass-fibre reinforced | ✓ |
| Flammability class UL 94 | V-0 |
| Working temperature, min. | -40 °C |
| Working temperature, max. | 120 °C |
| Sealing material | Polyurethane-based |
| Type of seal | Sealing and moulded flexible foam |
| Halogen-free | ✓ |
| Silicone-free | ✓ |

Further technical data

| | |
|-----------------------------|-----------------------------|
| Mounting type | Screws |
| Degree of protection | IP66 |
| NEMA Type | 1, 12, 4x (indoor use only) |
| Number of screw holes | 4 |
| Fixing screws | M 5 (ISO 4762 / DIN 912) |
| Torque of the fixing screws | 3 Nm |

Environmental Product Compliance

| | |
|--------------------------------|------------|
| REACH Conform | yes |
| REACH Reference date | 2023-01-17 |
| REACH Candidate Substance Note | No |
| RoHS Conform | yes |

Approvals

cUL Recognized

| | |
|--------------|-----------------|
| cUL approval | C22.2 No. 14-18 |
|--------------|-----------------|

| | |
|-----------------|---------|
| cUL File Number | E489821 |
|-----------------|---------|

| | |
|----------------|---|
| cUL Recognized | 1 |
|----------------|---|

UL Recognized

| | |
|-------------|---------|
| UL approval | UL 508A |
|-------------|---------|

| | |
|----------------|---------|
| UL File Number | E489821 |
|----------------|---------|

| | |
|---------------|---|
| UL Recognized | 1 |
|---------------|---|

| | |
|----------------|-----------------------------|
| UL Type Rating | 1, 12, 4x (indoor use only) |
|----------------|-----------------------------|

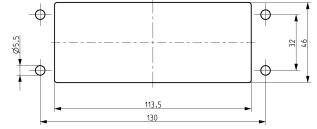
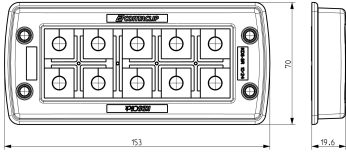
German Lloyd approval

| | |
|---------------------------|------------|
| DNV GL Certificate number | TAE00003V7 |
|---------------------------|------------|

| | |
|-------------------------|--|
| DNV GL Location Classes | Temperature: -40°C to 120°C, Humidity: B, Vibration: B, Ingress protection: IP66 |
|-------------------------|--|

| | |
|-------------------------|---|
| DNV GL approval granted | 1 |
|-------------------------|---|

Media



Accessories

Inlays

Cable entry, Inlay, Mounting type: Plug in, IP 66, Colour: Black



| Article number | Article name | GTIN (EAN) | Packaging unit |
|----------------|----------------|---------------|----------------|
| <u>28516.4</u> | KDS-Inlay 1 BK | 4044211210847 | 5 ST |

Cable entry, Inlay, Mounting type: Plug in, IP 66, Colour: Black



| Article number | Article name | GTIN (EAN) | Packaging unit |
|----------------|----------------|---------------|----------------|
| <u>28517.4</u> | KDS-Inlay 2 BK | 4044211210854 | 5 ST |

Cable entry, Inlay, Mounting type: Plug in, IP 66, Colour: Black



| Article number | Article name | GTIN (EAN) | Packaging unit |
|----------------|----------------|---------------|----------------|
| <u>28518.4</u> | KDS-Inlay 4 BK | 4044211210861 | 5 ST |

Cable entry, Inlay, Mounting type: Plug in, IP 66, Colour: Black



| Article number | Article name | GTIN (EAN) | Packaging unit |
|----------------|----------------|---------------|----------------|
| <u>28519.4</u> | KDS-Inlay 6 BK | 4044211210014 | 5 ST |

Locking frame

Inner locking frame, Length: 152 mm, Height: 11.5 mm, Colour: Black



| Article number | Article name | GTIN (EAN) | Packaging unit |
|----------------|------------------|---------------|----------------|
| <u>28505.4</u> | KDS-IVR 10/24 BK | 4044211210816 | 10 ST |

28504.4 KDS-SR 10/24 BK

Sealing plugs



Sealing plugs for the mounting holes of the KDS-SR screw frames, Material: TPE, Colour: black

| Article number | Article name | GTIN (EAN) | Packaging unit |
|-------------------------|--------------|---------------|----------------|
| 28779.4 | KDS-VS-SR BK | 4044211242602 | 100 ST |

Actuating tool



Using the KDS BW1 actuating tool, the seals can be conveniently mounted in and dismantled from the frame. The ergonomic grip and the special shape enable simple and precise installations, especially for cabling applications in confined spaces., Material: Polyamide

| Article number | Article name | GTIN (EAN) | Packaging unit |
|-------------------------|--------------|---------------|----------------|
| 28622.0 | KDS BW 1 | 4044211216597 | 1 ST |

EMC brackets



Shield-connection rail enabling mounting of shield connection clips directly on cable entry system KDS and KES, Mounting type: Screw, Length: 35,3 mm, Width: 140 mm, Height: 16 mm, Profile: 10x3 mm

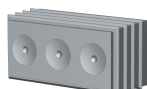
| Article number | Article name | GTIN (EAN) | Packaging unit |
|-------------------------|-------------------|---------------|----------------|
| 28626.0 | KDS-EMV-SAB 10/24 | 4044211219659 | 1 ST |

DES seals



Seal, Mounting type: Plug in, Length 42.7 mm, Width: 20.3 mm, IP54, Colour: Grey

| Article number | Article name | GTIN (EAN) | Packaging unit |
|-------------------------|-------------------|---------------|----------------|
| 28800.6 | KDS-DES 2X10,5 GR | 4044211227616 | 5 ST |

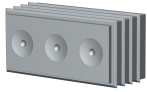


Seal, Mounting type: Plug in, Length 42.7 mm, Width: 20.3 mm, IP54, Colour: Grey

| Article number | Article name | GTIN (EAN) | Packaging unit |
|-------------------------|------------------|---------------|----------------|
| 28801.6 | KDS-DES 3X9,5 GR | 4044211227623 | 5 ST |

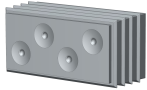
28504.4 KDS-SR 10/24 BK

DES seals



Seal, Mounting type: Plug in, Length 42.7 mm, Width: 20.3 mm, IP54, Colour: Grey

| Article number | Article name | GTIN (EAN) | Packaging unit |
|----------------|------------------|---------------|----------------|
| <u>28802.6</u> | KDS-DES 3X8,5 GR | 4044211227630 | 5 ST |



Seal, Mounting type: Plug in, Length 42.7 mm, Width: 20.3 mm, IP54, Colour: Grey

| Article number | Article name | GTIN (EAN) | Packaging unit |
|----------------|------------------|---------------|----------------|
| <u>28803.6</u> | KDS-DES 4X7,5 GR | 4044211233815 | 5 ST |



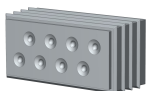
Seal, Mounting type: Plug in, Length 42.7 mm, Width: 20.3 mm, IP54, Colour: Grey

| Article number | Article name | GTIN (EAN) | Packaging unit |
|----------------|------------------|---------------|----------------|
| <u>28804.6</u> | KDS-DES 7X6,5 GR | 4044211233839 | 5 ST |



Seal, Mounting type: Plug in, Length 42.7 mm, Width: 20.3 mm, IP54, Colour: Grey

| Article number | Article name | GTIN (EAN) | Packaging unit |
|----------------|------------------|---------------|----------------|
| <u>28805.6</u> | KDS-DES 8X5,5 GR | 4044211233822 | 5 ST |



Seal, Mounting type: Plug in, Length 42.7 mm, Width: 20.3 mm, IP54, Colour: Grey

| Article number | Article name | GTIN (EAN) | Packaging unit |
|----------------|------------------|---------------|----------------|
| <u>28806.6</u> | KDS-DES 8X4,5 GR | 4044211233846 | 5 ST |

Sheet-metal puncher



Sheet-metal puncher

| Article number | Article name | GTIN (EAN) | Packaging unit |
|----------------|-----------------|---------------|----------------|
| <u>28677.0</u> | BL KDS-SR 10/24 | 4044211217471 | 1 ST |



Sheet metal punch for rectangular openings, Dimensions opening: 130 x 46 mm, Maximum wall thickness: 2.0 mm for stainless steel sheet, Material: steel

| Article number | Article name | GTIN (EAN) | Packaging unit |
|----------------|--------------------|---------------|----------------|
| <u>28686.0</u> | BL-VA KDS-SR 10/24 | 4044211218812 | 1 ST |