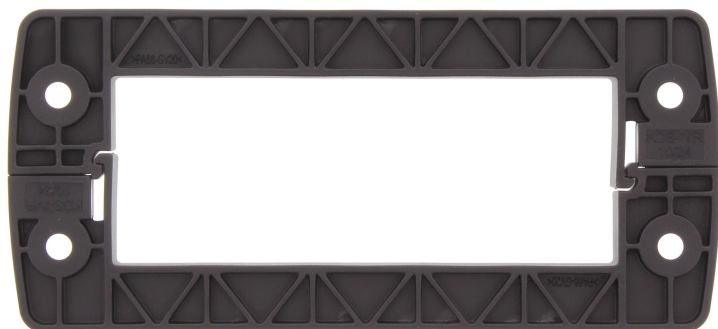


28505.4 KDS-IVR 10/24 BK



Inner locking frame, Length: 152 mm, Height: 11.5 mm, Colour: Black

RAL: 9005

Business data

Article number	28505.4
Article name	KDS-IVR 10/24 BK
GTIN (EAN)	4044211210816
Packaging unit	10
Quantity unit	PC
Weight per piece (not including packaging)	35.3 g
Weight per piece (including packaging)	35.7 g
Unit of weight	G
Customs number	39259020
Country of origin	DE
Product description	Cable Entry
Colour	Black

Technical data

Dimensions

Length	152 mm
Width	70 mm
Height	11.5 mm
Installation height	11.5 mm
Diameter of the screw holes	5.5 mm

Materials

Material	Polyamide 6.6
Glass-fibre reinforced	✓
Flammability class UL 94	V-0
Working temperature, min.	-40 °C
Working temperature, max.	120 °C
Halogen-free	✓
Silicone-free	✓

Further technical data

Mounting type	Screws
Sheet thickness max.	3 mm
Number of screw holes	4

Environmental Product Compliance

REACH Conform	yes
REACH Reference date	2023-01-17
REACH Candidate Substance Note	No
RoHS Conform	yes

Approvals

cUL Recognized

cUL approval	C22.2 No. 14-18
cUL File Number	E489821
cUL Recognized	1

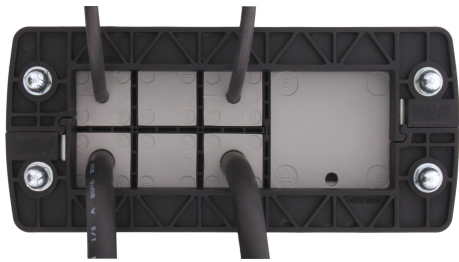
UL Recognized

UL approval	UL 508A
UL File Number	E489821
UL Recognized	1

German Lloyd approval

DNV GL Certificate number	TAE00003V7
DNV GL Location Classes	Temperature: -40°C to 120°C, Humidity: B, Vibration: B, Ingress protection: IP66
DNV GL approval granted	1

Media



Accessories

Small Seals



Seal, Mounting type: Plug in, Length x width: 42.8 mm, Max. cable diameter: 20 mm, IP 66, Colour: Black

Article number	Article name	GTIN (EAN)	Packaging unit
<u>28540.4</u>	KDS-DEG 19-20 BK	4044211215354	10 ST



Seal, Mounting type: Plug in, Length x width: 42.8 mm, Max. cable diameter: 33 mm, IP 66, Colour: Black

Article number	Article name	GTIN (EAN)	Packaging unit
<u>28601.4</u>	KDS-DEG 32-33 BK	4044211215613	10 ST



Seal dummy, Mounting type: Plug in, Length x width: 42.8 mm, IP 66, Colour: Black

Article number	Article name	GTIN (EAN)	Packaging unit
<u>28534.4</u>	KDS-DEG/B BK	4044211215255	10 ST



Seal, Mounting type: Plug in, Length x width: 42.8 mm, Max. cable diameter: 15 mm, IP 66, Colour: Black

Article number	Article name	GTIN (EAN)	Packaging unit
<u>28535.4</u>	KDS-DEG 14-15 BK	4044211209995	10 ST



Seal, Mounting type: Plug in, Length x width: 42.8 mm, Max. cable diameter: 16 mm, IP 66, Colour: Black

Article number	Article name	GTIN (EAN)	Packaging unit
<u>28536.4</u>	KDS-DEG 15-16 BK	4044211215279	10 ST



Seal, Mounting type: Plug in, Length x width: 42.8 mm, Max. cable diameter: 17 mm, IP 66, Colour: Black

Article number	Article name	GTIN (EAN)	Packaging unit
<u>28537.4</u>	KDS-DEG 16-17 BK	4044211215293	10 ST

28505.4 KDS-IVR 10/24 BK

Small Seals



Seal, Mounting type: Plug in, Length x width: 42.8 mm, Max. cable diameter: 18 mm, IP 66, Colour: Black

Article number	Article name	GTIN (EAN)	Packaging unit
<u>28538.4</u>	KDS-DEG 17-18 BK	4044211215316	10 ST



Seal, Mounting type: Plug in, Length x width: 42.8 mm, Max. cable diameter: 24 mm, IP 66, Colour: Black

Article number	Article name	GTIN (EAN)	Packaging unit
<u>28544.4</u>	KDS-DEG 23-24 BK	4044211215439	10 ST



Seal, Mounting type: Plug in, Length x width: 42.8 mm, Max. cable diameter: 20 mm, IP 66, Colour: Grey

Article number	Article name	GTIN (EAN)	Packaging unit
<u>28581.6</u>	KDS-DEG 19-20 GR	4044211215347	10 ST



Seal, Mounting type: Plug in, Length x width: 42.8 mm, Max. cable diameter: 21 mm, IP 66, Colour: Grey

Article number	Article name	GTIN (EAN)	Packaging unit
<u>28582.6</u>	KDS-DEG 20-21 GR	4044211215361	10 ST



Seal, Mounting type: Plug in, Length x width: 42.8 mm, Max. cable diameter: 22 mm, IP 66, Colour: Grey

Article number	Article name	GTIN (EAN)	Packaging unit
<u>28583.6</u>	KDS-DEG 21-22 GR	4044211215385	10 ST



Seal, Mounting type: Plug in, Length x width: 42.8 mm, Max. cable diameter: 23 mm, IP 66, Colour: Grey

Article number	Article name	GTIN (EAN)	Packaging unit
<u>28584.6</u>	KDS-DEG 22-23 GR	4044211215408	10 ST



Seal, Mounting type: Plug in, Length x width: 42.8 mm, Max. cable diameter: 25 mm, IP 66, Colour: Black

Article number	Article name	GTIN (EAN)	Packaging unit
<u>28545.4</u>	KDS-DEG 24-25 BK	4044211215453	10 ST

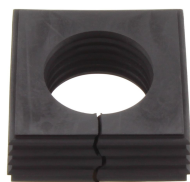
28505.4 KDS-IVR 10/24 BK

Small Seals



Seal, Mounting type: Plug in, Length x width: 42.8 mm, Max. cable diameter: 26 mm, IP 66, Colour: Black

Article number	Article name	GTIN (EAN)	Packaging unit
<u>28546.4</u>	KDS-DEG 25-26 BK	4044211215460	10 ST



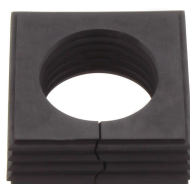
Seal, Mounting type: Plug in, Length x width: 42.8 mm, Max. cable diameter: 27 mm, IP 66, Colour: Black

Article number	Article name	GTIN (EAN)	Packaging unit
<u>28547.4</u>	KDS-DEG 26-27 BK	4044211215491	10 ST



Seal, Mounting type: Plug in, Length x width: 42.8 mm, Max. cable diameter: 28 mm, IP 66, Colour: Black

Article number	Article name	GTIN (EAN)	Packaging unit
<u>28548.4</u>	KDS-DEG 27-28 BK	4044211215514	10 ST



Seal, Mounting type: Plug in, Length x width: 42.8 mm, Max. cable diameter: 29 mm, IP 66, Colour: Black

Article number	Article name	GTIN (EAN)	Packaging unit
<u>28549.4</u>	KDS-DEG 28-29 BK	4044211215538	10 ST



Seal, Mounting type: Plug in, Length x width: 42.8 mm, Max. cable diameter: 30 mm, IP 66, Colour: Black

Article number	Article name	GTIN (EAN)	Packaging unit
<u>28550.4</u>	KDS-DEG 29-30 BK	4044211215552	10 ST



Seal, Mounting type: Plug in, Length x width: 42.8 mm, Max. cable diameter: 31 mm, IP 66, Colour: Black

Article number	Article name	GTIN (EAN)	Packaging unit
<u>28551.4</u>	KDS-DEG 30-31 BK	4044211215576	10 ST



Seal, Mounting type: Plug in, Length x width: 42.8 mm, Max. cable diameter: 32 mm, IP 66, Colour: Black

Article number	Article name	GTIN (EAN)	Packaging unit
<u>28552.4</u>	KDS-DEG 31-32 BK	4044211215590	10 ST

28505.4 KDS-IVR 10/24 BK

Small Seals



Seal, Mounting type: Plug in, Length x width: 42.8 mm, Max. cable diameter: 18 mm, IP 66, Colour: Grey

Article number	Article name	GTIN (EAN)	Packaging unit
<u>28579.6</u>	KDS-DEG 17-18 GR	4044211215309	10 ST



Seal, Mounting type: Plug in, Length x width: 42.8 mm, Max. cable diameter: 19 mm, IP 66, Colour: Grey

Article number	Article name	GTIN (EAN)	Packaging unit
<u>28580.6</u>	KDS-DEG 18-19 GR	4044211215323	10 ST



Seal dummy, Mounting type: Plug in, Length x width: 42.8 mm, IP 66, Colour: Grey

Article number	Article name	GTIN (EAN)	Packaging unit
<u>28575.6</u>	KDS-DEG/B GR	4044211215248	10 ST



Seal, Mounting type: Plug in, Length x width: 42.8 mm, Max. cable diameter: 15 mm, IP 66, Colour: Grey

Article number	Article name	GTIN (EAN)	Packaging unit
<u>28576.6</u>	KDS-DEG 14-15 GR	4044211209971	10 ST



Seal, Mounting type: Plug in, Length x width: 42.8 mm, Max. cable diameter: 16 mm, IP 66, Colour: Grey

Article number	Article name	GTIN (EAN)	Packaging unit
<u>28577.6</u>	KDS-DEG 15-16 GR	4044211215262	10 ST



Seal, Mounting type: Plug in, Length x width: 42.8 mm, Max. cable diameter: 17 mm, IP 66, Colour: Grey

Article number	Article name	GTIN (EAN)	Packaging unit
<u>28578.6</u>	KDS-DEG 16-17 GR	4044211215286	10 ST



Seal, Mounting type: Plug in, Length x width: 42.8 mm, Max. cable diameter: 32 mm, IP 66, Colour: Grey

Article number	Article name	GTIN (EAN)	Packaging unit
<u>28593.6</u>	KDS-DEG 31-32 GR	4044211215583	10 ST

28505.4 KDS-IVR 10/24 BK

Small Seals



Seal, Mounting type: Plug in, Length x width: 42.8 mm, Max. cable diameter: 33 mm, IP 66, Colour: Grey

Article number	Article name	GTIN (EAN)	Packaging unit
28594.6	KDS-DEG 32-33 GR	4044211215606	10 ST



Seal, Mounting type: Plug in, Length x width: 42.8 mm, Max. cable diameter: 23 mm, IP 66, Colour: Black

Article number	Article name	GTIN (EAN)	Packaging unit
28543.4	KDS-DEG 22-23 BK	4044211215415	10 ST



Seal, Mounting type: Plug in, Length x width: 42.8 mm, Max. cable diameter: 24 mm, IP 66, Colour: Black

Article number	Article name	GTIN (EAN)	Packaging unit
28554.4	KDS-DEG/K 7-24 BK	4044211216108	10 ST



Seal, Mounting type: Plug in, Length x width: 42.8 mm, Max. cable diameter: 24 mm, IP 66, Colour: Grey

Article number	Article name	GTIN (EAN)	Packaging unit
28585.6	KDS-DEG 23-24 GR	4044211215422	10 ST



Seal, Mounting type: Plug in, Length x width: 42.8 mm, Max. cable diameter: 25 mm, IP 66, Colour: Grey

Article number	Article name	GTIN (EAN)	Packaging unit
28586.6	KDS-DEG 24-25 GR	4044211215446	10 ST



Seal, Mounting type: Plug in, Length x width: 42.8 mm, Max. cable diameter: 26 mm, IP 66, Colour: Grey

Article number	Article name	GTIN (EAN)	Packaging unit
28587.6	KDS-DEG 25-26 GR	4044211215477	10 ST



Seal, Mounting type: Plug in, Length x width: 42.8 mm, Max. cable diameter: 27 mm, IP 66, Colour: Grey

Article number	Article name	GTIN (EAN)	Packaging unit
28588.6	KDS-DEG 26-27 GR	4044211215484	10 ST

28505.4 KDS-IVR 10/24 BK

Small Seals



Seal, Mounting type: Plug in, Length x width: 42.8 mm, Max. cable diameter: 28 mm, IP 66, Colour: Grey

Article number	Article name	GTIN (EAN)	Packaging unit
28589.6	KDS-DEG 27-28 GR	4044211215507	10 ST



Seal, Mounting type: Plug in, Length x width: 42.8 mm, Max. cable diameter: 29 mm, IP 66, Colour: Grey

Article number	Article name	GTIN (EAN)	Packaging unit
28590.6	KDS-DEG 28-29 GR	4044211215521	10 ST



Seal, Mounting type: Plug in, Length x width: 42.8 mm, Max. cable diameter: 30 mm, IP 66, Colour: Grey

Article number	Article name	GTIN (EAN)	Packaging unit
28591.6	KDS-DEG 29-30 GR	4044211215545	10 ST



Seal, Mounting type: Plug in, Length x width: 42.8 mm, Max. cable diameter: 31 mm, IP 66, Colour: Grey

Article number	Article name	GTIN (EAN)	Packaging unit
28592.6	KDS-DEG 30-31 GR	4044211215569	10 ST



Seal, Mounting type: Plug in, Length x width: 42.8 mm, Max. cable diameter: 19 mm, IP 66, Colour: Black

Article number	Article name	GTIN (EAN)	Packaging unit
28539.4	KDS-DEG 18-19 BK	4044211215330	10 ST



Seal, Mounting type: Plug in, Length x width: 42.8 mm, Max. cable diameter: 21 mm, IP 66, Colour: Black

Article number	Article name	GTIN (EAN)	Packaging unit
28541.4	KDS-DEG 20-21 BK	4044211215378	10 ST



Seal, Mounting type: Plug in, Length x width: 42.8 mm, Max. cable diameter: 22 mm, IP 66, Colour: Black

Article number	Article name	GTIN (EAN)	Packaging unit
28542.4	KDS-DEG 21-22 BK	4044211215392	10 ST

28505.4 KDS-IVR 10/24 BK

Small Seals



Seal, Mounting type: Plug in, Length x width: 20.3 mm, Max. cable diameter: 7 mm, IP 66, Colour: Grey

Article number	Article name	GTIN (EAN)	Packaging unit
<u>28567.6</u>	KDS-DE 6-7 GR	4044211211059	10 ST



Seal, Mounting type: Plug in, Length x width: 20.3 mm, Max. cable diameter: 8 mm, IP 66, Colour: Grey

Article number	Article name	GTIN (EAN)	Packaging unit
<u>28568.6</u>	KDS-DE 7-8 GR	4044211211066	10 ST



Seal, Mounting type: Plug in, Length x width: 20.3 mm, Max. cable diameter: 9 mm, IP 66, Colour: Grey

Article number	Article name	GTIN (EAN)	Packaging unit
<u>28569.6</u>	KDS-DE 8-9 GR	4044211211073	10 ST



Seal, Mounting type: Plug in, Length x width: 20.3 mm, Max. cable diameter: 10 mm, IP 66, Colour: Grey

Article number	Article name	GTIN (EAN)	Packaging unit
<u>28570.6</u>	KDS-DE 9-10 GR	4044211211080	10 ST



Seal, Mounting type: Plug in, Length x width: 20.3 mm, Max. cable diameter: 11 mm, IP 66, Colour: Grey

Article number	Article name	GTIN (EAN)	Packaging unit
<u>28571.6</u>	KDS-DE 10-11 GR	4044211211097	10 ST



Seal, Mounting type: Plug in, Length x width: 20.3 mm, Max. cable diameter: 12 mm, IP 66, Colour: Grey

Article number	Article name	GTIN (EAN)	Packaging unit
<u>28572.6</u>	KDS-DE 11-12 GR	4044211211103	10 ST



Seal, Mounting type: Plug in, Length x width: 20.3 mm, Max. cable diameter: 13 mm, IP 66, Colour: Grey

Article number	Article name	GTIN (EAN)	Packaging unit
<u>28573.6</u>	KDS-DE 12-13 GR	4044211215224	10 ST

28505.4 KDS-IVR 10/24 BK

Small Seals



Seal, Mounting type: Plug in, Length x width: 20.3 mm, Max. cable diameter: 3 mm, IP 66, Colour: Grey

Article number	Article name	GTIN (EAN)	Packaging unit
<u>28563.6</u>	KDS-DE 2-3 GR	4044211211011	10 ST



Seal, Mounting type: Plug in, Length x width: 20.3 mm, Max. cable diameter: 4 mm, IP 66, Colour: Grey

Article number	Article name	GTIN (EAN)	Packaging unit
<u>28564.6</u>	KDS-DE 3-4 GR	4044211211028	10 ST



Seal, Mounting type: Plug in, Length x width: 20.3 mm, Max. cable diameter: 5 mm, IP 66, Colour: Grey

Article number	Article name	GTIN (EAN)	Packaging unit
<u>28565.6</u>	KDS-DE 4-5 GR	4044211211035	10 ST



Seal, Mounting type: Plug in, Length x width: 20.3 mm, Max. cable diameter: 6 mm, IP 66, Colour: Grey

Article number	Article name	GTIN (EAN)	Packaging unit
<u>28566.6</u>	KDS-DE 5-6 GR	4044211211042	10 ST



Seal, Mounting type: Plug in, Length x width: 20.3 mm, Max. cable diameter: 14 mm, IP 66, Colour: Grey

Article number	Article name	GTIN (EAN)	Packaging unit
<u>28574.6</u>	KDS-DE 13-14 GR	4044211215231	10 ST



Seal, Mounting type: Plug in, Length x width: 20.3 mm, Max. cable diameter: 5 mm, IP 66, Colour: Grey

Article number	Article name	GTIN (EAN)	Packaging unit
<u>28595.6</u>	KDS-DE 2X4-5 GR	4044211215682	10 ST



Seal, Mounting type: Plug in, Length x width: 20.3 mm, Max. cable diameter: 6 mm, IP 66, Colour: Grey

Article number	Article name	GTIN (EAN)	Packaging unit
<u>28596.6</u>	KDS-DE 2X5-6 GR	4044211215699	10 ST

28505.4 KDS-IVR 10/24 BK

Small Seals



Seal, Mounting type: Plug in, Length x width: 20.3 mm, Max. cable diameter: 3 mm, IP 66, Colour: Grey

Article number	Article name	GTIN (EAN)	Packaging unit
<u>28597.6</u>	KDS-DE 4X2-3 GR	4044211215705	10 ST



Seal, Mounting type: Plug in, Length x width: 20.3 mm, Max. cable diameter: 4 mm, IP 66, Colour: Grey

Article number	Article name	GTIN (EAN)	Packaging unit
<u>28598.6</u>	KDS-DE 4X3-4 GR	4044211215712	10 ST



Seal, Mounting type: Plug in, Length x width: 20.3 mm, IP 66, Colour: Grey

Article number	Article name	GTIN (EAN)	Packaging unit
<u>28599.6</u>	KDS-DE/1XASI GR	4044211215729	10 ST



Seal, Mounting type: Plug in, Length x width: 20.3 mm, IP 66, Colour: Black

Article number	Article name	GTIN (EAN)	Packaging unit
<u>28560.4</u>	KDS-DE/2XASI BK	4044211215675	10 ST



Seal dummy, Mounting type: Plug in, Length x width: 20.3 mm, IP 66, Colour: Grey

Article number	Article name	GTIN (EAN)	Packaging unit
<u>28561.6</u>	KDS-DE/B GR	4044211211004	10 ST



Seal, Mounting type: Plug in, Length x width: 20.3 mm, Max. cable diameter: 2 mm, IP 66, Colour: Grey

Article number	Article name	GTIN (EAN)	Packaging unit
<u>28562.6</u>	KDS-DE 1,5-2 GR	4044211209988	10 ST



Seal, Mounting type: Plug in, Length x width: 20.3 mm, IP 66, Colour: Grey

Article number	Article name	GTIN (EAN)	Packaging unit
<u>28600.6</u>	KDS-DE/2XASI GR	4044211215736	10 ST

28505.4 KDS-IVR 10/24 BK

Small Seals



Seal, Mounting type: Plug in, Length x width: 20.3 mm, Max. cable diameter: 11 mm, IP 66, Colour: Black

Article number	Article name	GTIN (EAN)	Packaging unit
<u>28530.4</u>	KDS-DE 10-11 BK	4044211210960	10 ST



Seal, Mounting type: Plug in, Length x width: 20.3 mm, Max. cable diameter: 12 mm, IP 66, Colour: Black

Article number	Article name	GTIN (EAN)	Packaging unit
<u>28531.4</u>	KDS-DE 11-12 BK	4044211210977	10 ST



Seal, Mounting type: Plug in, Length x width: 20.3 mm, Max. cable diameter: 13 mm, IP 66, Colour: Black

Article number	Article name	GTIN (EAN)	Packaging unit
<u>28532.4</u>	KDS-DE 12-13 BK	4044211210984	10 ST



Seal, Mounting type: Plug in, Length x width: 20.3 mm, Max. cable diameter: 14 mm, IP 66, Colour: Black

Article number	Article name	GTIN (EAN)	Packaging unit
<u>28533.4</u>	KDS-DE 13-14 BK	4044211210991	10 ST



Seal, Mounting type: Plug in, Length x width: 20.3 mm, Max. cable diameter: 11 mm, IP 66, Colour: Black

Article number	Article name	GTIN (EAN)	Packaging unit
<u>28553.4</u>	KDS-DE/K 2-11 BK	4044211216092	10 ST



Seal, Mounting type: Plug in, Length x width: 20.3 mm, Max. cable diameter: 5 mm, IP 66, Colour: Black

Article number	Article name	GTIN (EAN)	Packaging unit
<u>28555.4</u>	KDS-DE 2X4-5 BK	4044211215620	10 ST



Seal, Mounting type: Plug in, Length x width: 20.3 mm, Max. cable diameter: 6 mm, IP 66, Colour: Black

Article number	Article name	GTIN (EAN)	Packaging unit
<u>28556.4</u>	KDS-DE 2X5-6 BK	4044211215637	10 ST

28505.4 KDS-IVR 10/24 BK

Small Seals



Seal, Mounting type: Plug in, Length x width: 20.3 mm, Max. cable diameter: 3 mm, IP 66, Colour: Black

Article number	Article name	GTIN (EAN)	Packaging unit
28557.4	KDS-DE 4X2-3 BK	4044211215644	10 ST



Seal, Mounting type: Plug in, Length x width: 20.3 mm, Max. cable diameter: 4 mm, IP 66, Colour: Black

Article number	Article name	GTIN (EAN)	Packaging unit
28558.4	KDS-DE 4X3-4 BK	4044211215651	10 ST



Seal, Mounting type: Plug in, Length x width: 20.3 mm, IP 66, Colour: Black

Article number	Article name	GTIN (EAN)	Packaging unit
28559.4	KDS-DE/1XASI BK	4044211215668	10 ST



Seal dummy, Mounting type: Plug in, Length x width: 20.3 mm, IP 66, Colour: Black

Article number	Article name	GTIN (EAN)	Packaging unit
28520.4	KDS-DE/B BK	4044211210878	10 ST



Seal, Mounting type: Plug in, Length x width: 20.3 mm, Max. cable diameter: 2 mm, IP 66, Colour: Black

Article number	Article name	GTIN (EAN)	Packaging unit
28521.4	KDS-DE 1,5-2 BK	4044211210007	10 ST



Seal, Mounting type: Plug in, Length x width: 20.3 mm, Max. cable diameter: 3 mm, IP 66, Colour: Black

Article number	Article name	GTIN (EAN)	Packaging unit
28522.4	KDS-DE 2-3 BK	4044211210885	10 ST



Seal, Mounting type: Plug in, Length x width: 20.3 mm, Max. cable diameter: 4 mm, IP 66, Colour: Black

Article number	Article name	GTIN (EAN)	Packaging unit
28523.4	KDS-DE 3-4 BK	4044211210892	10 ST

28505.4 KDS-IVR 10/24 BK

Small Seals



Seal, Mounting type: Plug in, Length x width: 20.3 mm, Max. cable diameter: 5 mm, IP 66, Colour: Black

Article number	Article name	GTIN (EAN)	Packaging unit
<u>28524.4</u>	KDS-DE 4-5 BK	4044211210908	10 ST



Seal, Mounting type: Plug in, Length x width: 20.3 mm, Max. cable diameter: 6 mm, IP 66, Colour: Black

Article number	Article name	GTIN (EAN)	Packaging unit
<u>28525.4</u>	KDS-DE 5-6 BK	4044211210915	10 ST



Seal, Mounting type: Plug in, Length x width: 20.3 mm, Max. cable diameter: 7 mm, IP 66, Colour: Black

Article number	Article name	GTIN (EAN)	Packaging unit
<u>28526.4</u>	KDS-DE 6-7 BK	4044211210922	10 ST



Seal, Mounting type: Plug in, Length x width: 20.3 mm, Max. cable diameter: 8 mm, IP 66, Colour: Black

Article number	Article name	GTIN (EAN)	Packaging unit
<u>28527.4</u>	KDS-DE 7-8 BK	4044211210939	10 ST



Seal, Mounting type: Plug in, Length x width: 20.3 mm, Max. cable diameter: 9 mm, IP 66, Colour: Black

Article number	Article name	GTIN (EAN)	Packaging unit
<u>28528.4</u>	KDS-DE 8-9 BK	4044211210946	10 ST



Seal, Mounting type: Plug in, Length x width: 20.3 mm, Max. cable diameter: 10 mm, IP 66, Colour: Black

Article number	Article name	GTIN (EAN)	Packaging unit
<u>28529.4</u>	KDS-DE 9-10 BK	4044211210953	10 ST

Screw frame

28505.4 KDS-IVR 10/24 BK



Cable entry with foamed-in seal, Mounting type: Screws, Length: 153 mm, Width: 70 mm, IP 66, Colour: Black

Article number	Article name	GTIN (EAN)	Packaging unit
<u>28504.4</u>	KDS-SR 10/24 BK	4044211210809	1 ST

Inlays



Cable entry, Inlay, Mounting type: Plug in, IP 66, Colour: Black

Article number	Article name	GTIN (EAN)	Packaging unit
<u>28516.4</u>	KDS-Inlay 1 BK	4044211210847	5 ST



Cable entry, Inlay, Mounting type: Plug in, IP 66, Colour: Black

Article number	Article name	GTIN (EAN)	Packaging unit
<u>28517.4</u>	KDS-Inlay 2 BK	4044211210854	5 ST



Cable entry, Inlay, Mounting type: Plug in, IP 66, Colour: Black

Article number	Article name	GTIN (EAN)	Packaging unit
<u>28518.4</u>	KDS-Inlay 4 BK	4044211210861	5 ST



Cable entry, Inlay, Mounting type: Plug in, IP 66, Colour: Black

Article number	Article name	GTIN (EAN)	Packaging unit
<u>28519.4</u>	KDS-Inlay 6 BK	4044211210014	5 ST

##INVERSE##CONTA-CABLE



Seal, Mounting type: Plug in, Length x width: 42.8 mm, Max. cable diameter: 20 mm, IP 66, Colour: Black

Article number	Article name	GTIN (EAN)	Packaging unit
<u>28540.4</u>	KDS-DEG 19-20 BK	4044211215354	10 ST

28505.4 KDS-IVR 10/24 BK

##INVERSE##CONTA-CABLE



Seal, Mounting type: Plug in, Length x width: 42.8 mm, Max. cable diameter: 33 mm, IP 66, Colour: Black

Article number	Article name	GTIN (EAN)	Packaging unit
28601.4	KDS-DEG 32-33 BK	4044211215613	10 ST



Seal dummy, Mounting type: Plug in, Length x width: 42.8 mm, IP 66, Colour: Black

Article number	Article name	GTIN (EAN)	Packaging unit
28534.4	KDS-DEG/B BK	4044211215255	10 ST



Seal, Mounting type: Plug in, Length x width: 42.8 mm, Max. cable diameter: 15 mm, IP 66, Colour: Black

Article number	Article name	GTIN (EAN)	Packaging unit
28535.4	KDS-DEG 14-15 BK	4044211209995	10 ST



Seal, Mounting type: Plug in, Length x width: 42.8 mm, Max. cable diameter: 16 mm, IP 66, Colour: Black

Article number	Article name	GTIN (EAN)	Packaging unit
28536.4	KDS-DEG 15-16 BK	4044211215279	10 ST



Seal, Mounting type: Plug in, Length x width: 42.8 mm, Max. cable diameter: 17 mm, IP 66, Colour: Black

Article number	Article name	GTIN (EAN)	Packaging unit
28537.4	KDS-DEG 16-17 BK	4044211215293	10 ST



Seal, Mounting type: Plug in, Length x width: 42.8 mm, Max. cable diameter: 18 mm, IP 66, Colour: Black

Article number	Article name	GTIN (EAN)	Packaging unit
28538.4	KDS-DEG 17-18 BK	4044211215316	10 ST



Seal, Mounting type: Plug in, Length x width: 42.8 mm, Max. cable diameter: 24 mm, IP 66, Colour: Black

Article number	Article name	GTIN (EAN)	Packaging unit
28544.4	KDS-DEG 23-24 BK	4044211215439	10 ST

28505.4 KDS-IVR 10/24 BK

##INVERSE##CONTA-CABLE



Seal, Mounting type: Plug in, Length x width: 42.8 mm, Max. cable diameter: 20 mm, IP 66, Colour: Grey

Article number	Article name	GTIN (EAN)	Packaging unit
<u>28581.6</u>	KDS-DEG 19-20 GR	4044211215347	10 ST



Seal, Mounting type: Plug in, Length x width: 42.8 mm, Max. cable diameter: 21 mm, IP 66, Colour: Grey

Article number	Article name	GTIN (EAN)	Packaging unit
<u>28582.6</u>	KDS-DEG 20-21 GR	4044211215361	10 ST



Seal, Mounting type: Plug in, Length x width: 42.8 mm, Max. cable diameter: 22 mm, IP 66, Colour: Grey

Article number	Article name	GTIN (EAN)	Packaging unit
<u>28583.6</u>	KDS-DEG 21-22 GR	4044211215385	10 ST



Seal, Mounting type: Plug in, Length x width: 42.8 mm, Max. cable diameter: 23 mm, IP 66, Colour: Grey

Article number	Article name	GTIN (EAN)	Packaging unit
<u>28584.6</u>	KDS-DEG 22-23 GR	4044211215408	10 ST



Seal, Mounting type: Plug in, Length x width: 42.8 mm, Max. cable diameter: 25 mm, IP 66, Colour: Black

Article number	Article name	GTIN (EAN)	Packaging unit
<u>28545.4</u>	KDS-DEG 24-25 BK	4044211215453	10 ST



Seal, Mounting type: Plug in, Length x width: 42.8 mm, Max. cable diameter: 26 mm, IP 66, Colour: Black

Article number	Article name	GTIN (EAN)	Packaging unit
<u>28546.4</u>	KDS-DEG 25-26 BK	4044211215460	10 ST



Seal, Mounting type: Plug in, Length x width: 42.8 mm, Max. cable diameter: 27 mm, IP 66, Colour: Black

Article number	Article name	GTIN (EAN)	Packaging unit
<u>28547.4</u>	KDS-DEG 26-27 BK	4044211215491	10 ST

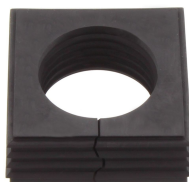
28505.4 KDS-IVR 10/24 BK

##INVERSE##CONTA-CABLE



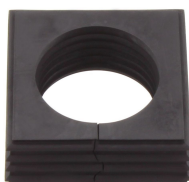
Seal, Mounting type: Plug in, Length x width: 42.8 mm, Max. cable diameter: 28 mm, IP 66, Colour: Black

Article number	Article name	GTIN (EAN)	Packaging unit
28548.4	KDS-DEG 27-28 BK	4044211215514	10 ST



Seal, Mounting type: Plug in, Length x width: 42.8 mm, Max. cable diameter: 29 mm, IP 66, Colour: Black

Article number	Article name	GTIN (EAN)	Packaging unit
28549.4	KDS-DEG 28-29 BK	4044211215538	10 ST



Seal, Mounting type: Plug in, Length x width: 42.8 mm, Max. cable diameter: 30 mm, IP 66, Colour: Black

Article number	Article name	GTIN (EAN)	Packaging unit
28550.4	KDS-DEG 29-30 BK	4044211215552	10 ST



Seal, Mounting type: Plug in, Length x width: 42.8 mm, Max. cable diameter: 31 mm, IP 66, Colour: Black

Article number	Article name	GTIN (EAN)	Packaging unit
28551.4	KDS-DEG 30-31 BK	4044211215576	10 ST



Seal, Mounting type: Plug in, Length x width: 42.8 mm, Max. cable diameter: 32 mm, IP 66, Colour: Black

Article number	Article name	GTIN (EAN)	Packaging unit
28552.4	KDS-DEG 31-32 BK	4044211215590	10 ST



Seal, Mounting type: Plug in, Length x width: 42.8 mm, Max. cable diameter: 18 mm, IP 66, Colour: Grey

Article number	Article name	GTIN (EAN)	Packaging unit
28579.6	KDS-DEG 17-18 GR	4044211215309	10 ST



Seal, Mounting type: Plug in, Length x width: 42.8 mm, Max. cable diameter: 19 mm, IP 66, Colour: Grey

Article number	Article name	GTIN (EAN)	Packaging unit
28580.6	KDS-DEG 18-19 GR	4044211215323	10 ST

28505.4 KDS-IVR 10/24 BK

##INVERSE##CONTA-CABLE



Seal dummy, Mounting type: Plug in, Length x width: 42.8 mm, IP 66, Colour: Grey

Article number	Article name	GTIN (EAN)	Packaging unit
28575.6	KDS-DEG/B GR	4044211215248	10 ST



Seal, Mounting type: Plug in, Length x width: 42.8 mm, Max. cable diameter: 15 mm, IP 66, Colour: Grey

Article number	Article name	GTIN (EAN)	Packaging unit
28576.6	KDS-DEG 14-15 GR	4044211209971	10 ST



Seal, Mounting type: Plug in, Length x width: 42.8 mm, Max. cable diameter: 16 mm, IP 66, Colour: Grey

Article number	Article name	GTIN (EAN)	Packaging unit
28577.6	KDS-DEG 15-16 GR	4044211215262	10 ST



Seal, Mounting type: Plug in, Length x width: 42.8 mm, Max. cable diameter: 17 mm, IP 66, Colour: Grey

Article number	Article name	GTIN (EAN)	Packaging unit
28578.6	KDS-DEG 16-17 GR	4044211215286	10 ST



Seal, Mounting type: Plug in, Length x width: 42.8 mm, Max. cable diameter: 32 mm, IP 66, Colour: Grey

Article number	Article name	GTIN (EAN)	Packaging unit
28593.6	KDS-DEG 31-32 GR	4044211215583	10 ST



Seal, Mounting type: Plug in, Length x width: 42.8 mm, Max. cable diameter: 33 mm, IP 66, Colour: Grey

Article number	Article name	GTIN (EAN)	Packaging unit
28594.6	KDS-DEG 32-33 GR	4044211215606	10 ST



Seal, Mounting type: Plug in, Length x width: 42.8 mm, Max. cable diameter: 23 mm, IP 66, Colour: Black

Article number	Article name	GTIN (EAN)	Packaging unit
28543.4	KDS-DEG 22-23 BK	4044211215415	10 ST

28505.4 KDS-IVR 10/24 BK

##INVERSE##CONTA-CABLE



Seal, Mounting type: Plug in, Length x width: 42.8 mm, Max. cable diameter: 24 mm, IP 66, Colour: Black

Article number	Article name	GTIN (EAN)	Packaging unit
<u>28554.4</u>	KDS-DEG/K 7-24 BK	4044211216108	10 ST



Seal, Mounting type: Plug in, Length x width: 42.8 mm, Max. cable diameter: 24 mm, IP 66, Colour: Grey

Article number	Article name	GTIN (EAN)	Packaging unit
<u>28585.6</u>	KDS-DEG 23-24 GR	4044211215422	10 ST



Seal, Mounting type: Plug in, Length x width: 42.8 mm, Max. cable diameter: 25 mm, IP 66, Colour: Grey

Article number	Article name	GTIN (EAN)	Packaging unit
<u>28586.6</u>	KDS-DEG 24-25 GR	4044211215446	10 ST



Seal, Mounting type: Plug in, Length x width: 42.8 mm, Max. cable diameter: 26 mm, IP 66, Colour: Grey

Article number	Article name	GTIN (EAN)	Packaging unit
<u>28587.6</u>	KDS-DEG 25-26 GR	4044211215477	10 ST



Seal, Mounting type: Plug in, Length x width: 42.8 mm, Max. cable diameter: 27 mm, IP 66, Colour: Grey

Article number	Article name	GTIN (EAN)	Packaging unit
<u>28588.6</u>	KDS-DEG 26-27 GR	4044211215484	10 ST



Seal, Mounting type: Plug in, Length x width: 42.8 mm, Max. cable diameter: 28 mm, IP 66, Colour: Grey

Article number	Article name	GTIN (EAN)	Packaging unit
<u>28589.6</u>	KDS-DEG 27-28 GR	4044211215507	10 ST



Seal, Mounting type: Plug in, Length x width: 42.8 mm, Max. cable diameter: 29 mm, IP 66, Colour: Grey

Article number	Article name	GTIN (EAN)	Packaging unit
<u>28590.6</u>	KDS-DEG 28-29 GR	4044211215521	10 ST

28505.4 KDS-IVR 10/24 BK

##INVERSE##CONTA-CABLE



Seal, Mounting type: Plug in, Length x width: 42.8 mm, Max. cable diameter: 30 mm, IP 66, Colour: Grey

Article number	Article name	GTIN (EAN)	Packaging unit
28591.6	KDS-DEG 29-30 GR	4044211215545	10 ST



Seal, Mounting type: Plug in, Length x width: 42.8 mm, Max. cable diameter: 31 mm, IP 66, Colour: Grey

Article number	Article name	GTIN (EAN)	Packaging unit
28592.6	KDS-DEG 30-31 GR	4044211215569	10 ST



Seal, Mounting type: Plug in, Length x width: 42.8 mm, Max. cable diameter: 19 mm, IP 66, Colour: Black

Article number	Article name	GTIN (EAN)	Packaging unit
28539.4	KDS-DEG 18-19 BK	4044211215330	10 ST



Seal, Mounting type: Plug in, Length x width: 42.8 mm, Max. cable diameter: 21 mm, IP 66, Colour: Black

Article number	Article name	GTIN (EAN)	Packaging unit
28541.4	KDS-DEG 20-21 BK	4044211215378	10 ST



Seal, Mounting type: Plug in, Length x width: 42.8 mm, Max. cable diameter: 22 mm, IP 66, Colour: Black

Article number	Article name	GTIN (EAN)	Packaging unit
28542.4	KDS-DEG 21-22 BK	4044211215392	10 ST



Seal, Mounting type: Plug in, Length x width: 20.3 mm, Max. cable diameter: 7 mm, IP 66, Colour: Grey

Article number	Article name	GTIN (EAN)	Packaging unit
28567.6	KDS-DE 6-7 GR	4044211211059	10 ST



Seal, Mounting type: Plug in, Length x width: 20.3 mm, Max. cable diameter: 8 mm, IP 66, Colour: Grey

Article number	Article name	GTIN (EAN)	Packaging unit
28568.6	KDS-DE 7-8 GR	4044211211066	10 ST

28505.4 KDS-IVR 10/24 BK

##INVERSE##CONTA-CABLE



Seal, Mounting type: Plug in, Length x width: 20.3 mm, Max. cable diameter: 9 mm, IP 66, Colour: Grey

Article number	Article name	GTIN (EAN)	Packaging unit
28569.6	KDS-DE 8-9 GR	4044211211073	10 ST



Seal, Mounting type: Plug in, Length x width: 20.3 mm, Max. cable diameter: 10 mm, IP 66, Colour: Grey

Article number	Article name	GTIN (EAN)	Packaging unit
28570.6	KDS-DE 9-10 GR	4044211211080	10 ST



Seal, Mounting type: Plug in, Length x width: 20.3 mm, Max. cable diameter: 11 mm, IP 66, Colour: Grey

Article number	Article name	GTIN (EAN)	Packaging unit
28571.6	KDS-DE 10-11 GR	4044211211097	10 ST



Seal, Mounting type: Plug in, Length x width: 20.3 mm, Max. cable diameter: 12 mm, IP 66, Colour: Grey

Article number	Article name	GTIN (EAN)	Packaging unit
28572.6	KDS-DE 11-12 GR	4044211211103	10 ST



Seal, Mounting type: Plug in, Length x width: 20.3 mm, Max. cable diameter: 13 mm, IP 66, Colour: Grey

Article number	Article name	GTIN (EAN)	Packaging unit
28573.6	KDS-DE 12-13 GR	4044211215224	10 ST



Seal, Mounting type: Plug in, Length x width: 20.3 mm, Max. cable diameter: 3 mm, IP 66, Colour: Grey

Article number	Article name	GTIN (EAN)	Packaging unit
28563.6	KDS-DE 2-3 GR	4044211211011	10 ST



Seal, Mounting type: Plug in, Length x width: 20.3 mm, Max. cable diameter: 4 mm, IP 66, Colour: Grey

Article number	Article name	GTIN (EAN)	Packaging unit
28564.6	KDS-DE 3-4 GR	4044211211028	10 ST

28505.4 KDS-IVR 10/24 BK

##INVERSE##CONTA-CABLE



Seal, Mounting type: Plug in, Length x width: 20.3 mm, Max. cable diameter: 5 mm, IP 66, Colour: Grey

Article number	Article name	GTIN (EAN)	Packaging unit
28565.6	KDS-DE 4-5 GR	4044211211035	10 ST



Seal, Mounting type: Plug in, Length x width: 20.3 mm, Max. cable diameter: 6 mm, IP 66, Colour: Grey

Article number	Article name	GTIN (EAN)	Packaging unit
28566.6	KDS-DE 5-6 GR	4044211211042	10 ST



Seal, Mounting type: Plug in, Length x width: 20.3 mm, Max. cable diameter: 14 mm, IP 66, Colour: Grey

Article number	Article name	GTIN (EAN)	Packaging unit
28574.6	KDS-DE 13-14 GR	4044211215231	10 ST



Seal, Mounting type: Plug in, Length x width: 20.3 mm, Max. cable diameter: 5 mm, IP 66, Colour: Grey

Article number	Article name	GTIN (EAN)	Packaging unit
28595.6	KDS-DE 2X4-5 GR	4044211215682	10 ST



Seal, Mounting type: Plug in, Length x width: 20.3 mm, Max. cable diameter: 6 mm, IP 66, Colour: Grey

Article number	Article name	GTIN (EAN)	Packaging unit
28596.6	KDS-DE 2X5-6 GR	4044211215699	10 ST



Seal, Mounting type: Plug in, Length x width: 20.3 mm, Max. cable diameter: 3 mm, IP 66, Colour: Grey

Article number	Article name	GTIN (EAN)	Packaging unit
28597.6	KDS-DE 4X2-3 GR	4044211215705	10 ST



Seal, Mounting type: Plug in, Length x width: 20.3 mm, Max. cable diameter: 4 mm, IP 66, Colour: Grey

Article number	Article name	GTIN (EAN)	Packaging unit
28598.6	KDS-DE 4X3-4 GR	4044211215712	10 ST

28505.4 KDS-IVR 10/24 BK

##INVERSE##CONTA-CABLE



Seal, Mounting type: Plug in, Length x width: 20.3 mm, IP 66, Colour: Grey

Article number	Article name	GTIN (EAN)	Packaging unit
<u>28599.6</u>	KDS-DE/1XASI GR	4044211215729	10 ST



Seal, Mounting type: Plug in, Length x width: 20.3 mm, IP 66, Colour: Black

Article number	Article name	GTIN (EAN)	Packaging unit
<u>28560.4</u>	KDS-DE/2XASI BK	4044211215675	10 ST



Seal dummy, Mounting type: Plug in, Length x width: 20.3 mm, IP 66, Colour: Grey

Article number	Article name	GTIN (EAN)	Packaging unit
<u>28561.6</u>	KDS-DE/B GR	4044211211004	10 ST



Seal, Mounting type: Plug in, Length x width: 20.3 mm, Max. cable diameter: 2 mm, IP 66, Colour: Grey

Article number	Article name	GTIN (EAN)	Packaging unit
<u>28562.6</u>	KDS-DE 1,5-2 GR	4044211209988	10 ST



Seal, Mounting type: Plug in, Length x width: 20.3 mm, Max. cable diameter: 6.5 mm, IP 66, Colour: Black

Article number	Article name	GTIN (EAN)	Packaging unit
<u>28682.4</u>	KDS-DE 2X6,5 BK	4044211219536	10 ST



Seal, Mounting type: Plug in, Length x width: 20.3 mm, Max. cable diameter: 6.5 mm, IP 66, Colour: Black

Article number	Article name	GTIN (EAN)	Packaging unit
<u>28687.4</u>	KDS-DE 3X5-6 BK	4044211220501	10 ST



Seal, Mounting type: Plug in, Length x width: 20.3 mm, Max. cable diameter: 2 mm, IP 66, Colour: Grey

Article number	Article name	GTIN (EAN)	Packaging unit
<u>28696.6</u>	KDS-DE 2 GR	4044211220884	10 ST

28505.4 KDS-IVR 10/24 BK

##INVERSE##CONTA-CABLE



Seal, Mounting type: Plug in, Length x width: 20.3 mm, Max. cable diameter: 3 mm, IP 66, Colour: Black

Article number	Article name	GTIN (EAN)	Packaging unit
<u>28697.4</u>	KDS-DE 3 BK	4044211220891	10 ST



Seal, Mounting type: Plug in, Length x width: 20.3 mm, Max. cable diameter: 3 mm, IP 66, Colour: Grey

Article number	Article name	GTIN (EAN)	Packaging unit
<u>28698.6</u>	KDS-DE 3 GR	4044211220907	10 ST



Seal, Mounting type: Plug in, Length x width: 20.3 mm, IP 66, Colour: Grey

Article number	Article name	GTIN (EAN)	Packaging unit
<u>28600.6</u>	KDS-DE/2XASI GR	4044211215736	10 ST



Seal, Mounting type: Plug in, Length x width: 20.3 mm, Max. cable diameter: 4.5 mm, IP 66, Colour: Grey

Article number	Article name	GTIN (EAN)	Packaging unit
<u>28606.6</u>	KDS-DE 4X4,5 GR	4044211216252	10 ST



Seal, Mounting type: Plug in, Length x width: 20.3 mm, Max. cable diameter: 6.5 mm, IP 66, Colour: Grey

Article number	Article name	GTIN (EAN)	Packaging unit
<u>28607.6</u>	KDS-DE 2X6,5 GR	4044211216238	10 ST



Seal, Mounting type: Plug in, Length x width: 20.3 mm, Max. cable diameter: 15 mm, IP 66, Colour: Black

Article number	Article name	GTIN (EAN)	Packaging unit
<u>28608.4</u>	KDS-DE 14-15 BK	4044211219314	10 ST



Seal, Mounting type: Plug in, Length x width: 20.3 mm, Max. cable diameter: 15 mm, IP 66, Colour: Grey

Article number	Article name	GTIN (EAN)	Packaging unit
<u>28609.6</u>	KDS-DE 14-15 GR	4044211219307	10 ST

28505.4 KDS-IVR 10/24 BK

##INVERSE##CONTA-CABLE



Seal, Mounting type: Plug in, Length x width: 20.3 mm, Max. cable diameter: 16 mm, IP 66, Colour: Black

Article number	Article name	GTIN (EAN)	Packaging unit
28670.4	KDS-DE 15-16 BK	4044211219321	10 ST



Seal, Mounting type: Plug in, Length x width: 20.3 mm, Max. cable diameter: 17 mm, IP 66, Colour: Grey

Article number	Article name	GTIN (EAN)	Packaging unit
28671.6	KDS-DE 15-16 GR	4044211219338	10 ST



Seal, Mounting type: Plug in, Length x width: 20.3 mm, Max. cable diameter: 5 mm, IP 66, Colour: Black

Article number	Article name	GTIN (EAN)	Packaging unit
28672.4	KDS-DE 4X5 BK	4044211219345	10 ST



Seal, Mounting type: Plug in, Length x width: 20.3 mm, Max. cable diameter: 5 mm, IP 66, Colour: Grey

Article number	Article name	GTIN (EAN)	Packaging unit
28673.6	KDS-DE 4X5 GR	4044211219352	10 ST



Seal, Mounting type: Plug in, Length x width: 20.3 mm, Max. cable diameter: 4.5 mm, IP 66, Colour: Black

Article number	Article name	GTIN (EAN)	Packaging unit
28681.4	KDS-DE 4X4,5 BK	4044211219543	10 ST



Seal, Mounting type: Plug in, Length x width: 20.3 mm, Max. cable diameter: 11 mm, IP 66, Colour: Black

Article number	Article name	GTIN (EAN)	Packaging unit
28530.4	KDS-DE 10-11 BK	4044211210960	10 ST



Seal, Mounting type: Plug in, Length x width: 20.3 mm, Max. cable diameter: 12 mm, IP 66, Colour: Black

Article number	Article name	GTIN (EAN)	Packaging unit
28531.4	KDS-DE 11-12 BK	4044211210977	10 ST

28505.4 KDS-IVR 10/24 BK

##INVERSE##CONTA-CABLE



Seal, Mounting type: Plug in, Length x width: 20.3 mm, Max. cable diameter: 13 mm, IP 66, Colour: Black

Article number	Article name	GTIN (EAN)	Packaging unit
28532.4	KDS-DE 12-13 BK	4044211210984	10 ST



Seal, Mounting type: Plug in, Length x width: 20.3 mm, Max. cable diameter: 14 mm, IP 66, Colour: Black

Article number	Article name	GTIN (EAN)	Packaging unit
28533.4	KDS-DE 13-14 BK	4044211210991	10 ST



Seal, Mounting type: Plug in, Length x width: 20.3 mm, Max. cable diameter: 11 mm, IP 66, Colour: Black

Article number	Article name	GTIN (EAN)	Packaging unit
28553.4	KDS-DE/K 2-11 BK	4044211216092	10 ST



Seal, Mounting type: Plug in, Length x width: 20.3 mm, Max. cable diameter: 5 mm, IP 66, Colour: Black

Article number	Article name	GTIN (EAN)	Packaging unit
28555.4	KDS-DE 2X4-5 BK	4044211215620	10 ST



Seal, Mounting type: Plug in, Length x width: 20.3 mm, Max. cable diameter: 6 mm, IP 66, Colour: Black

Article number	Article name	GTIN (EAN)	Packaging unit
28556.4	KDS-DE 2X5-6 BK	4044211215637	10 ST



Seal, Mounting type: Plug in, Length x width: 20.3 mm, Max. cable diameter: 3 mm, IP 66, Colour: Black

Article number	Article name	GTIN (EAN)	Packaging unit
28557.4	KDS-DE 4X2-3 BK	4044211215644	10 ST



Seal, Mounting type: Plug in, Length x width: 20.3 mm, Max. cable diameter: 4 mm, IP 66, Colour: Black

Article number	Article name	GTIN (EAN)	Packaging unit
28558.4	KDS-DE 4X3-4 BK	4044211215651	10 ST

28505.4 KDS-IVR 10/24 BK

##INVERSE##CONTA-CABLE



Seal, Mounting type: Plug in, Length x width: 20.3 mm, IP 66, Colour: Black

Article number	Article name	GTIN (EAN)	Packaging unit
<u>28559.4</u>	KDS-DE/1XASI BK	4044211215668	10 ST



Seal dummy, Mounting type: Plug in, Length x width: 20.3 mm, IP 66, Colour: Black

Article number	Article name	GTIN (EAN)	Packaging unit
<u>28520.4</u>	KDS-DE/B BK	4044211210878	10 ST



Seal, Mounting type: Plug in, Length x width: 20.3 mm, Max. cable diameter: 2 mm, IP 66, Colour: Black

Article number	Article name	GTIN (EAN)	Packaging unit
<u>28521.4</u>	KDS-DE 1,5-2 BK	4044211210007	10 ST



Seal, Mounting type: Plug in, Length x width: 20.3 mm, Max. cable diameter: 3 mm, IP 66, Colour: Black

Article number	Article name	GTIN (EAN)	Packaging unit
<u>28522.4</u>	KDS-DE 2-3 BK	4044211210885	10 ST



Seal, Mounting type: Plug in, Length x width: 20.3 mm, Max. cable diameter: 4 mm, IP 66, Colour: Black

Article number	Article name	GTIN (EAN)	Packaging unit
<u>28523.4</u>	KDS-DE 3-4 BK	4044211210892	10 ST



Seal, Mounting type: Plug in, Length x width: 20.3 mm, Max. cable diameter: 5 mm, IP 66, Colour: Black

Article number	Article name	GTIN (EAN)	Packaging unit
<u>28524.4</u>	KDS-DE 4-5 BK	4044211210908	10 ST



Seal, Mounting type: Plug in, Length x width: 20.3 mm, Max. cable diameter: 6 mm, IP 66, Colour: Black

Article number	Article name	GTIN (EAN)	Packaging unit
<u>28525.4</u>	KDS-DE 5-6 BK	4044211210915	10 ST

28505.4 KDS-IVR 10/24 BK

##INVERSE##CONTA-CABLE



Seal, Mounting type: Plug in, Length x width: 20.3 mm, Max. cable diameter: 7 mm, IP 66, Colour: Black

Article number	Article name	GTIN (EAN)	Packaging unit
<u>28526.4</u>	KDS-DE 6-7 BK	4044211210922	10 ST



Seal, Mounting type: Plug in, Length x width: 20.3 mm, Max. cable diameter: 8 mm, IP 66, Colour: Black

Article number	Article name	GTIN (EAN)	Packaging unit
<u>28527.4</u>	KDS-DE 7-8 BK	4044211210939	10 ST



Seal, Mounting type: Plug in, Length x width: 20.3 mm, Max. cable diameter: 9 mm, IP 66, Colour: Black

Article number	Article name	GTIN (EAN)	Packaging unit
<u>28528.4</u>	KDS-DE 8-9 BK	4044211210946	10 ST



Seal, Mounting type: Plug in, Length x width: 20.3 mm, Max. cable diameter: 10 mm, IP 66, Colour: Black

Article number	Article name	GTIN (EAN)	Packaging unit
<u>28529.4</u>	KDS-DE 9-10 BK	4044211210953	10 ST



Seal, Mounting type: Plug in, Length x width: 20.3 mm, Max. cable diameter: 6 mm, IP 66, Colour: Grey

Article number	Article name	GTIN (EAN)	Packaging unit
<u>28688.6</u>	KDS-DE 3X5-6 GR	4044211220518	10 ST



Seal, Mounting type: Plug in, Length x width: 20.3 mm, Max. cable diameter: 7 mm, IP 66, Colour: Black

Article number	Article name	GTIN (EAN)	Packaging unit
<u>28689.4</u>	KDS-DE 2X7 BK	4044211220815	10 ST



Seal, Mounting type: Plug in, Length x width: 20.3 mm, Max. cable diameter: 7 mm, IP 66, Colour: Grey

Article number	Article name	GTIN (EAN)	Packaging unit
<u>28690.6</u>	KDS-DE 2X7 GR	4044211220822	10 ST

28505.4 KDS-IVR 10/24 BK

##INVERSE##CONTA-CABLE



Seal, Mounting type: Plug in, Length x width: 20.3 mm, Max. cable diameter: 8 mm, IP 66, Colour: Black

Article number	Article name	GTIN (EAN)	Packaging unit
<u>28691.4</u>	KDS-DE 2X8 BK	4044211220839	10 ST



Seal, Mounting type: Plug in, Length x width: 20.3 mm, Max. cable diameter: 8 mm, IP 66, Colour: Grey

Article number	Article name	GTIN (EAN)	Packaging unit
<u>28692.6</u>	KDS-DE 2X8 GR	4044211220846	10 ST



Seal, Mounting type: Plug in, Length x width: 20.3 mm, Max. cable diameter: 1.5 mm, IP 66, Colour: Black

Article number	Article name	GTIN (EAN)	Packaging unit
<u>28693.4</u>	KDS-DE 1,5 BK	4044211220853	10 ST



Seal, Mounting type: Plug in, Length x width: 20.3 mm, Max. cable diameter: 1.5 mm, IP 66, Colour: Grey

Article number	Article name	GTIN (EAN)	Packaging unit
<u>28694.6</u>	KDS-DE 1,5 GR	4044211220860	10 ST



Seal, Mounting type: Plug in, Length x width: 20.3 mm, Max. cable diameter: 2 mm, IP 66, Colour: Black

Article number	Article name	GTIN (EAN)	Packaging unit
<u>28695.4</u>	KDS-DE 2 BK	4044211220877	10 ST



Cable entry, Inlay, Mounting type: Plug in, IP 66, Colour: Black

Article number	Article name	GTIN (EAN)	Packaging unit
<u>28516.4</u>	KDS-Inlay 1 BK	4044211210847	5 ST



Cable entry, Inlay, Mounting type: Plug in, IP 66, Colour: Black

Article number	Article name	GTIN (EAN)	Packaging unit
<u>28517.4</u>	KDS-Inlay 2 BK	4044211210854	5 ST

28505.4 KDS-IVR 10/24 BK

##INVERSE##CONTA-CABLE



Cable entry, Inlay, Mounting type: Plug in, IP 66, Colour: Black

Article number	Article name	GTIN (EAN)	Packaging unit
<u>28518.4</u>	KDS-Inlay 4 BK	4044211210861	5 ST



Cable entry, Inlay, Mounting type: Plug in, IP 66, Colour: Black

Article number	Article name	GTIN (EAN)	Packaging unit
<u>28519.4</u>	KDS-Inlay 6 BK	4044211210014	5 ST



Cable entry with foamed-in seal, Mounting type: Screws, Length: 153 mm, Width: 70 mm, IP 66, Colour: Black

Article number	Article name	GTIN (EAN)	Packaging unit
<u>28504.4</u>	KDS-SR 10/24 BK	4044211210809	1 ST

##INVERSE##CONTA-CABLE



Seal, Mounting type: Plug in, Length x width: 42.8 mm, Max. cable diameter: 19 mm, IP 66, Colour: Grey

Article number	Article name	GTIN (EAN)	Packaging unit
<u>28580.6</u>	KDS-DEG 18-19 GR	4044211215323	10 ST