



Seal, Mounting type: Plug in, Length x width: 20.3 mm, Max. cable diameter: 12 mm, IP 66, Colour: Black

**RAL:** 9005

### Business data

Article number	28531.4
Article name	KDS-DE 11-12 BK
GTIN (EAN)	4044211210977
Packaging unit	10
Quantity unit	PC
Weight per piece (not including packaging)	4.9 g
Weight per piece (including packaging)	5.3 g
Unit of weight	G
Customs number	39259020
Country of origin	DE
Product description	Sealing Element
Colour	Black

### Technical data

#### Dimensions

Length	20.3 mm
Width	20.3 mm
Height	17.7 mm

#### Materials

Material	TPE
Flammability class UL 94	HB
Working temperature, min.	-40 °C
Working temperature, max.	120 °C
Halogen-free	✓
Silicone-free	✓
UV-resistant	✓

#### Further technical data

Mounting type	Plug in
Degree of protection	IP66
Strain relief	✓
Cable diameter, min.	11 mm
Cable diameter, max.	12 mm
NEMA Type	1, 12, 4x (indoor use only)
Number of wires	1

#### Environmental Product Compliance

REACH Conform	yes
REACH Reference date	2023-01-17
REACH Candidate Substance Note	No
RoHS Conform	yes

---

### Approvals

---

#### Standards and regulations

---

Standards / specifications	Strain relief complying with DIN EN 62444
----------------------------	---

---

#### cUL Recognized

---

cUL approval	C22.2 No. 14-18
--------------	-----------------

---

cUL File Number	E489821
-----------------	---------

---

cUL Recognized	1
----------------	---

---

#### UL Recognized

---

UL approval	UL 508A
-------------	---------

---

UL File Number	E489821
----------------	---------

---

UL Recognized	1
---------------	---

---

UL Type Rating	1, 12, 4x (indoor use only)
----------------	-----------------------------

---

#### German Lloyd approval

---

DNV GL Certificate number	TAE00003V7
---------------------------	------------

---

DNV GL Location Classes	Temperature: -40°C to 120°C, Humidity: B, Vibration: B, Ingress protection: IP66
-------------------------	--

---

DNV GL approval granted	1
-------------------------	---

---

---

### Media

---



## 28531.4 KDS-DE 11-12 BK

### Accessories

#### Inlays

Cable entry, Inlay, Mounting type: Plug in, IP 66, Colour: Black



Article number	Article name	GTIN (EAN)	Packaging unit
<a href="#">28516.4</a>	KDS-Inlay 1 BK	4044211210847	5 ST

Cable entry, Inlay, Mounting type: Plug in, IP 66, Colour: Black



Article number	Article name	GTIN (EAN)	Packaging unit
<a href="#">28517.4</a>	KDS-Inlay 2 BK	4044211210854	5 ST

Cable entry, Inlay, Mounting type: Plug in, IP 66, Colour: Black



Article number	Article name	GTIN (EAN)	Packaging unit
<a href="#">28518.4</a>	KDS-Inlay 4 BK	4044211210861	5 ST

Cable entry, Inlay, Mounting type: Plug in, IP 66, Colour: Black



Article number	Article name	GTIN (EAN)	Packaging unit
<a href="#">28519.4</a>	KDS-Inlay 6 BK	4044211210014	5 ST

#### Screw frame

Cable entry with foamed-in seal, Mounting type: Screws, Length: 153 mm, Width: 70 mm, IP 66, Colour: Black



Article number	Article name	GTIN (EAN)	Packaging unit
<a href="#">28504.4</a>	KDS-SR 10/24 BK	4044211210809	1 ST

Cable entry with foamed-in seal, Mounting type: Screws, Length: 106 mm, Width: 70 mm, IP 66, Colour: Black



Article number	Article name	GTIN (EAN)	Packaging unit
<a href="#">28500.4</a>	KDS-SR 6/10 BK	4044211210021	1 ST

## 28531.4 KDS-DE 11-12 BK

### Screw frame



Cable entry with foamed-in seal, Mounting type: Screws, Length: 126 mm, Width: 70 mm, IP 66, Colour: Black

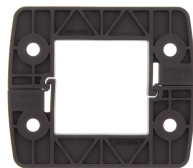
Article number	Article name	GTIN (EAN)	Packaging unit
<a href="#">28502.4</a>	KDS-SR 8/16 BK	4044211210786	1 ST



Cable entry with foamed-in seal, Mounting type: Screws, Length: 81 mm, Width: 70 mm, IP 66, Colour: Black

Article number	Article name	GTIN (EAN)	Packaging unit
<a href="#">28506.4</a>	KDS-SR 1-4 BK	4044211210823	1 ST

### Locking frame



Inner locking frame, Length: 80 mm, Height: 11.5 mm, Colour: Black

Article number	Article name	GTIN (EAN)	Packaging unit
<a href="#">28507.4</a>	KDS-IVR 1-4 BK	4044211210830	10 ST



Inner locking frame, Length: 105 mm, Height: 11.5 mm, Colour: Black

Article number	Article name	GTIN (EAN)	Packaging unit
<a href="#">28501.4</a>	KDS-IVR 6/10 BK	4044211210779	10 ST



Inner locking frame, Length: 125 mm, Height: 11.5 mm, Colour: Black

Article number	Article name	GTIN (EAN)	Packaging unit
<a href="#">28503.4</a>	KDS-IVR 8/16 BK	4044211210793	10 ST



Inner locking frame, Length: 152 mm, Height: 11.5 mm, Colour: Black

Article number	Article name	GTIN (EAN)	Packaging unit
<a href="#">28505.4</a>	KDS-IVR 10/24 BK	4044211210816	10 ST

##INVERSE##CONTA-CABLE

## 28531.4 KDS-DE 11-12 BK



Split cable gland including counter nut, Thread type: metric, Material: PA 6.6, Protection: IP 66, Colour: Black

Article number	Article name	GTIN (EAN)	Packaging unit
<a href="#">28612.4</a>	KDS-KV M32 BK	4044211208950	10 ST



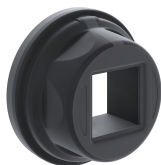
Split cable gland including counter nut, Thread type: metric, Material: PA 6.6, Protection: IP 66, Colour: Black

Article number	Article name	GTIN (EAN)	Packaging unit
<a href="#">28611.4</a>	KDS-KV M25 BK	4044211208943	10 ST



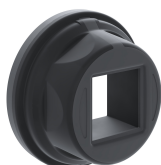
Cable entry flange plate with foamed-in frame gasket, Mounting type: Screw, Length: 165 mm, Width: 174 mm, IP66, Colour: Black

Article number	Article name	GTIN (EAN)	Packaging unit
<a href="#">28661.4</a>	KDS-FP 3x10/24 BK	4044211220365	1 ST



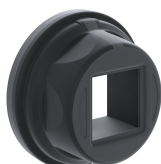
Round cable entry, Material: polyamide PA 6.6, glass-fibre reinforced | TPE, Colour: Black

Article number	Article name	GTIN (EAN)	Packaging unit
<a href="#">28770.4</a>	KDS-R 20-32 BK	4044211234508	5 ST



Round cable entry, Material: polyamide PA 6.6, glass-fibre reinforced | TPE, Colour: Black

Article number	Article name	GTIN (EAN)	Packaging unit
<a href="#">28770.4</a>	KDS-R 20-32 BK	4044211234508	5 ST



Round cable entry, Material: polyamide PA 6.6, glass-fibre reinforced | TPE, Colour: Black

Article number	Article name	GTIN (EAN)	Packaging unit
<a href="#">28770.4</a>	KDS-R 20-32 BK	4044211234508	5 ST



Cable entry with moulded-in seal, Mounting type: Screws, Length: 120 mm, Width: 39 mm, IP 66, Colour: Black

Article number	Article name	GTIN (EAN)	Packaging unit
<a href="#">28706.4</a>	KDS-SR-FB3/D BK	4044211225537	10 ST

## 28531.4 KDS-DE 11-12 BK

Cable entry, Inlay, Mounting type: Plug in, IP 66, Colour: Black



Article number	Article name	GTIN (EAN)	Packaging unit
<a href="#">28516.4</a>	KDS-Inlay 1 BK	4044211210847	5 ST

Thread and locking adapter, Material: Polyamide PA 6.6, glass-fibre reinforced, Colour: Black



Article number	Article name	GTIN (EAN)	Packaging unit
<a href="#">28777.4</a>	KDS-RGA M63 BK	4044211234577	5 ST

Cable entry with moulded-in seal, Mounting type: Screws, Length: 147 mm, Width: 39 mm, IP 66, Colour: Black



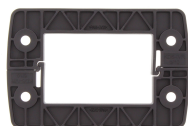
Article number	Article name	GTIN (EAN)	Packaging unit
<a href="#">28708.4</a>	KDS-SR-FB4/B BK	4044211225551	10 ST

Cable entry with moulded-in seal, Mounting type: Screws, Length: 147 mm, Width: 39 mm, IP 66, Colour: Black



Article number	Article name	GTIN (EAN)	Packaging unit
<a href="#">28709.4</a>	KDS-SR-FB4/C BK	4044211225568	10 ST

Inner locking frame, Length: 105 mm, Height: 11.5 mm, Colour: Black



Article number	Article name	GTIN (EAN)	Packaging unit
<a href="#">28501.4</a>	KDS-IVR 6/10 BK	4044211210779	10 ST

Cable entry, Inlay, Mounting type: Plug in, IP 66, Colour: Black



Article number	Article name	GTIN (EAN)	Packaging unit
<a href="#">28519.4</a>	KDS-Inlay 6 BK	4044211210014	5 ST

Inner locking frame, Length: 80 mm, Height: 11.5 mm, Colour: Black



Article number	Article name	GTIN (EAN)	Packaging unit
<a href="#">28507.4</a>	KDS-IVR 1-4 BK	4044211210830	10 ST



## 28531.4 KDS-DE 11-12 BK



Cable entry with moulded-in seal, Mounting type: Screws, Length: 147 mm, Width: 39 mm, IP 66, Colour: Black

Article number	Article name	GTIN (EAN)	Packaging unit
<a href="#">28710.4</a>	KDS-SR-FB4/D BK	4044211225575	10 ST



Cable entry with foamed-in seal, Mounting type: Screws, Length: 126 mm, Width: 70 mm, IP 66, Colour: Black

Article number	Article name	GTIN (EAN)	Packaging unit
<a href="#">28502.4</a>	KDS-SR 8/16 BK	4044211210786	1 ST



Cable entry set, IP66, Consisting of: 1 x KDS-SR 8/16, 1 x KDS-Inlay 1, 2 x KDS-Inlay 4

Article number	Article name	GTIN (EAN)	Packaging unit
<a href="#">28604.4</a>	KDS-Set 8/16 BK	4044211216207	1 ST



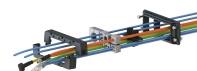
Cable entry set, IP66, Consisting of: 1xKDSI-SR 6/10, 1xKDS-Inlay 2, 1xKDS-Inlay 6

Article number	Article name	GTIN (EAN)	Packaging unit
<a href="#">28891.4</a>	KDSI-SET 6/10 BK	4044211242169	1 ST



Cable entry with foamed-in seal, Mounting type: Screws, Length: 81 mm, Width: 70 mm, IP 66, Colour: Black

Article number	Article name	GTIN (EAN)	Packaging unit
<a href="#">28506.4</a>	KDS-SR 1-4 BK	4044211210823	1 ST



Cable entry with TPE seal, Mounting type: Screws, Length: 106 mm, Width: 64 mm, IP 66, Colour: Black

Article number	Article name	GTIN (EAN)	Packaging unit
<a href="#">28881.4</a>	KDSI-SR 6/10 BK	4044211242084	1 ST



Cable entry with TPE seal, Mounting type: Screws, Length: 153 mm, Width: 64 mm, IP 66, Colour: Black

Article number	Article name	GTIN (EAN)	Packaging unit
<a href="#">28883.4</a>	KDSI-SR 10/24 BK	4044211242107	1 ST

## 28531.4 KDS-DE 11-12 BK



Cable entry, Inlay, Mounting type: Plug in, IP 66, Colour: Black

Article number	Article name	GTIN (EAN)	Packaging unit
<a href="#">28519.4</a>	KDS-Inlay 6 BK	4044211210014	5 ST



Cable entry set, IP66, Consisting of: 1 x KDSI-SR 1-4 BK, 1 x KDS-Inlay 4 BK

Article number	Article name	GTIN (EAN)	Packaging unit
<a href="#">28890.4</a>	KDSI-SET 1-4 BK	4044211242152	1 ST



Cable entry set, IP66, Consisting of: 1xKDSI-SR 6/10, 1xKDS-Inlay 2, 1xKDS-Inlay 6

Article number	Article name	GTIN (EAN)	Packaging unit
<a href="#">28891.4</a>	KDSI-SET 6/10 BK	4044211242169	1 ST



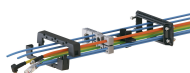
Cable entry set, IP66, Consisting of: 1xKDSI-SR 8/16, 2xKDS-Inlay 4

Article number	Article name	GTIN (EAN)	Packaging unit
<a href="#">28892.4</a>	KDSI-SET 8/16 BK	4044211242176	1 ST



Cable entry set, IP66, Consisting of: 1 x KDSI-SR 1-4 BK, 1 x KDS-Inlay 4 BK

Article number	Article name	GTIN (EAN)	Packaging unit
<a href="#">28890.4</a>	KDSI-SET 1-4 BK	4044211242152	1 ST



Cable entry with TPE seal, Mounting type: Screws, Length: 106 mm, Width: 64 mm, IP 66, Colour: Black

Article number	Article name	GTIN (EAN)	Packaging unit
<a href="#">28881.4</a>	KDSI-SR 6/10 BK	4044211242084	1 ST



Cable entry set, IP66, Consisting of: 1xKDSI-SR 8/16, 2xKDS-Inlay 4

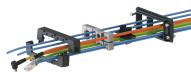
Article number	Article name	GTIN (EAN)	Packaging unit
<a href="#">28892.4</a>	KDSI-SET 8/16 BK	4044211242176	1 ST



Cable entry set, IP66, Consisting of: 1xKDSI-SR 10/24, each 1xKDS-Inlay 2,4,6

Article number	Article name	GTIN (EAN)	Packaging unit
<a href="#">28893.4</a>	KDSI-SET 10/24 BK	4044211242183	1 ST

## 28531.4 KDS-DE 11-12 BK



Cable entry with TPE seal, Mounting type: Screws, Length: 153 mm, Width: 64 mm, IP 66, Colour: Black

Article number	Article name	GTIN (EAN)	Packaging unit
<u>28883.4</u>	KDSI-SR 10/24 BK	4044211242107	1 ST



Cable entry set, IP66, Consisting of: 1 x KDSI-SR 1-4 BK, 1 x KDS-Inlay 4 BK

Article number	Article name	GTIN (EAN)	Packaging unit
<u>28890.4</u>	KDSI-SET 1-4 BK	4044211242152	1 ST



Cable entry set, IP66, Consisting of: 1xKDSI-SR 6/10, 1xKDS-Inlay 2, 1xKDS-Inlay 6

Article number	Article name	GTIN (EAN)	Packaging unit
<u>28891.4</u>	KDSI-SET 6/10 BK	4044211242169	1 ST



Cable entry set, IP66, Consisting of: 1xKDSI-SR 8/16, 2xKDS-Inlay 4

Article number	Article name	GTIN (EAN)	Packaging unit
<u>28892.4</u>	KDSI-SET 8/16 BK	4044211242176	1 ST



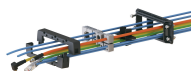
Cable entry set, IP66, Consisting of: 1xKDSI-SR 10/24, each 1xKDS-Inlay 2,4,6

Article number	Article name	GTIN (EAN)	Packaging unit
<u>28893.4</u>	KDSI-SET 10/24 BK	4044211242183	1 ST



Cable entry with TPE seal, Mounting type: Screws, Length: 81 mm, Width: 64 mm, IP 66, Colour: Black

Article number	Article name	GTIN (EAN)	Packaging unit
<u>28880.4</u>	KDSI-SR 1-4 BK	4044211243807	1 ST



Cable entry with TPE seal, Mounting type: Screws, Length: 126 mm, Width: 64 mm, IP 66, Colour: Black

Article number	Article name	GTIN (EAN)	Packaging unit
<u>28882.4</u>	KDSI-SR 8/16 BK	4044211242091	1 ST

## 28531.4 KDS-DE 11-12 BK



Cable entry with TPE seal, Mounting type: Screws, Length: 153 mm, Width: 64 mm, IP66, Colour: Black

Article number	Article name	GTIN (EAN)	Packaging unit
<u>28883.4</u>	KDSI-SR 10/24 BK	4044211242107	1 ST



Cable entry set, IP66, Consisting of: 1 x KDSI-SR 1-4 BK, 1 x KDS-Inlay 4 BK

Article number	Article name	GTIN (EAN)	Packaging unit
<u>28890.4</u>	KDSI-SET 1-4 BK	4044211242152	1 ST



Cable entry set, IP66, Consisting of: 1xKDSI-SR 6/10, 1xKDS-Inlay 2, 1xKDS-Inlay 6

Article number	Article name	GTIN (EAN)	Packaging unit
<u>28891.4</u>	KDSI-SET 6/10 BK	4044211242169	1 ST



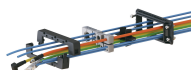
Cable entry set, IP66, Consisting of: 1xKDSI-SR 8/16, 2xKDS-Inlay 4

Article number	Article name	GTIN (EAN)	Packaging unit
<u>28892.4</u>	KDSI-SET 8/16 BK	4044211242176	1 ST



Cable entry set, IP66, Consisting of: 1xKDSI-SR 10/24, each 1xKDS-Inlay 2,4,6

Article number	Article name	GTIN (EAN)	Packaging unit
<u>28893.4</u>	KDSI-SET 10/24 BK	4044211242183	1 ST



Cable entry with TPE seal, Mounting type: Screws, Length: 106 mm, Width: 64 mm, IP 66, Colour: Black

Article number	Article name	GTIN (EAN)	Packaging unit
<u>28881.4</u>	KDSI-SR 6/10 BK	4044211242084	1 ST