

High-power stud terminal, Stud connection, Mounting type: Mounting rail TS 35/7.5, Rated cross-section: 185 mm<sup>2</sup>, Width: 55 mm, Colour: Beige

### Business data

Article number	17024.2
Article name	HSKG 185/M12/B/B BG
GTIN (EAN)	4044211177423
Packaging unit	5
Quantity unit	PC
Weight per piece (not including packaging)	390 g
Weight per piece (including packaging)	409 g
Unit of weight	G
Customs number	85369010
Country of origin	DE
Product description	High-power stud terminal
Colour	Beige

### Technical data

#### Dimensions

Length	164 mm
Length with TW/ADH	288 mm
Width	55 mm
Height TS 35/7.5	78 mm
Height TS 35/7.5 with TW/ADH	90 mm

#### Ratings

Rated voltage	1000 V
Rated current	353 A
Rated cross-section	185 mm <sup>2</sup>
Rated impulse voltage	8 kV
Overvoltage category	III
Contamination degree	3
Maximum power dissipation for nominal condition	11.3 W

#### Connection data

Connection principle	Stud connection
Connection position	Top
Connections	2
Number of terminals per level	2
Number of levels	1
Wire cross-section AWG, min.	8
Wire cross-section AWG, max.	500 Kcmil
Bolt head	Hexagon
Bolt thread	M 12
Tightening torque, min.	14 Nm
Tightening torque, max.	31 Nm
Contact wire range	? 185 mm <sup>2</sup>

#### Materials

Insulation housing	Polyamide 6.6
Flammability class UL 94	V-0
Working temperature, min.	-40 °C
Working temperature, max.	120 °C

### Technical data

#### Further technical data

Mounting type	Mounting rail TS 35/7,5
Spanner width (AF)	19 mm
Number of cross-connection channels	2
DIN 46234 / 1 cable lug per side, min.	10 mm <sup>2</sup>
DIN 46234 / 1 cable lug per side, max.	240 mm <sup>2</sup>
DIN 46234 / 2 cable lugs per side, min.	10 mm <sup>2</sup>
DIN 46234 / 2 cable lugs per side, max.	185 mm <sup>2</sup>
DIN 46235: 1 cable lug per side, max.	240 mm <sup>2</sup>
DIN 46235: 1 cable lug per side, min.	25 mm <sup>2</sup>
DIN 46235: 2 cable lugs per side, min.	25 mm <sup>2</sup>
DIN 46235: 2 cable lugs per side, max.	185 mm <sup>2</sup>

#### Environmental Product Compliance

REACH Conform	yes
REACH Reference date	2023-01-17
REACH Candidate Substance Note	No
RoHS Conform	yes

### Approvals

#### Standards and regulations

Bureau Veritas approval	IEC 60947-7-1
Bureau Veritas approval granted	yes
EAC approval	TR ZU 004/2011
EAC approval granted	yes

#### cUL Recognized

cUL approval	C22.2 No 158
cUL Usegroup B: rated voltage	1000 V
cUL Usegroup B: rated current	380 A
cUL Usegroup C: rated voltage	1000 V
cUL Usegroup C: rated current	380 A
cUL wire cross-section AWG, min.	8
cUL wire cross-section AWG, max.	500 Kcmil
cUL torque, min.	14 Nm
cUL torque, max.	31 Nm
cUL wire material	Cu
cUL Recognized	1

#### KEMA KEUR approval

KEMA KEUR approval	EN 60947-7-1:2009
KEMA KEUR approval granted	yes
KEMA rated voltage	1000 V
KEMA rated current	353 A
KEMA rated impulse voltage	8 kV
KEMA wire cross-section, max.	185 mm <sup>2</sup>
KEMA torque, min.	14 Nm
KEMA torque, max.	31 Nm

### Approvals

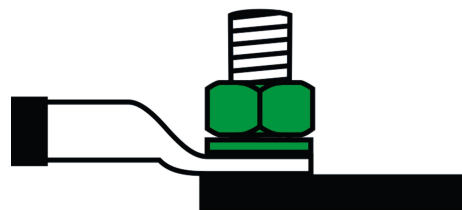
#### UL Recognized

UL approval	UL 1059
UL Usegroup B: rated voltage	1000 V
UL Usegroup B: rated current (only for factory wiring)	380 A
UL Usegroup C: rated voltage	1000 V
UL Usegroup C: rated current (only for factory wiring)	380 A
UL wire cross-section AWG, min.	8
UL wire cross-section AWG, max.	500 Kcmil
UL torque, min.	123.9 Lb In.
UL torque, max.	274.4 Lb In.
UL wire material	Cu
UL factory wiring	1
UL field wiring	1
UL Recognized	1

#### German Lloyd approval

DNV GL Certificate number	TAE00002JH
DNV GL Location Classes	Temperature: B, Humidity: B, Vibration: A
DNV GL approval granted	1
DNV GL rated cross-section	185 mm <sup>2</sup>
DNV GL rated current	353 A
DNV GL rated impulse voltage	8 kV
DNV GL rated voltage	1000 V
DNV GL test standard	IEC 60947-7-1:2009

### Media



### Accessories

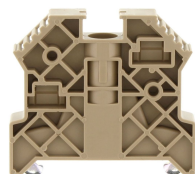
#### Protective hood



Cover profile, Length: 139.5 mm, Width: 52.9 mm, Colour: Yellow

Article number	Article name	GTIN (EAN)	Packaging unit
<u>17123.8</u>	ADH 185/300 YE	4044211177478	10

#### End stop



End stop, Mounting type: Mounting rail TS 35/7.5, Width: 9.5 mm, Colour: Beige

Article number	Article name	GTIN (EAN)	Packaging unit
<u>2828.0</u>	ES 35/K/ST BG	4044211055547	50

#### Cross-connection rail



Cross-connector, No. of poles: 2, Mounting type: Can be screwed on, Width: 95 mm, Rated cross-section: 185 mm<sup>2</sup>, Colour: natural

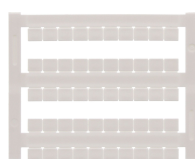
Article number	Article name	GTIN (EAN)	Packaging unit
<u>17243.0</u>	QS 2/185/12	4044211178048	10 ST



Cross-connector, No. of poles: 3, Mounting type: Can be screwed on, Width: 150 mm, Rated cross-section: 185 mm<sup>2</sup>, Colour: natural

Article number	Article name	GTIN (EAN)	Packaging unit
<u>17244.0</u>	QS 3/185/12	4044211178055	10 ST

#### Quick marking



Terminal marker / Pocket Maxicard, Length: 5 mm, Width: 6 mm, Colour: White

Article number	Article name	GTIN (EAN)	Packaging unit
<u>4702.7</u>	PMC SB 6/50 WH	4044211089986	500 ST

## 17024.2 HSKG 185/M12/B/B BG

### Partition plate

Partition platefor HSKG 185 and HSKG 300, Length: 229 mm, Width: 2 mm, Colour: Beige



Article number	Article name	GTIN (EAN)	Packaging unit
<u>17263.2</u>	TW HSKG BG	4044211185930	10 ST

### ##INVERSE##CONTA-CONNECT

Partition platefor HSKG 185 and HSKG 300, Length: 229 mm, Width: 2 mm, Colour: Beige



Article number	Article name	GTIN (EAN)	Packaging unit
<u>17263.2</u>	TW HSKG BG	4044211185930	10 ST