



Cable entry with membrane for unassembled cables, Mounting type: Screw, Length: 147 mm, Width: 58 mm, IP66, Colour: Grey

**RAL:** Ähnlich 7035

### Business data

|  |               |
|--|---------------|
| Article number                             | 28637.6       |
| Article name                               | KES 32/24 GR  |
| GTIN (EAN)                                 | 4044211220020 |
| Packaging unit                             | 10            |
| Quantity unit                              | PC            |
| Weight per piece (not including packaging) | 71.4 g        |
| Weight per piece (including packaging)     | 71.4 g        |
| Unit of weight                             | G             |
| Customs number                             | 39259020      |
| Country of origin                          | DE            |
| Prio-Article                               | 28637.6       |
| Product description                        | Cable Entry   |

### Technical data

#### Dimensions

|                             |          |
|-----------------------------|----------|
| Length                      | 149.6 mm |
| Length of wall cutout       | 112 mm   |
| Width                       | 58 mm    |
| Width of wall cutout        | 36 mm    |
| Installation height         | 14.5 mm  |
| Diameter of the screw holes | 5.5 mm   |

#### Materials

|                           |               |
|---------------------------|---------------|
| Material                  | Polyamide 6.6 |
| Glass-fibre reinforced    | ✓             |
| Flammability class UL 94  | V-0           |
| Working temperature, min. | -40 °C        |
| Working temperature, max. | 90 °C         |
| Sealing material          | TPE           |
| Halogen-free              | ✓             |
| Silicone-free             | ✓             |

#### Further technical data

|   |                             |
|---|-----------------------------|
| Mounting type                                     | Screws                      |
| Degree of protection                              | IP66                        |
| NEMA Type   | 1, 12, 4x (indoor use only) |
| Number of screw holes                             | 4                           |
| Fixing screws                                     | M5 (ISO 4762 / DIN 912)     |
| Torque of the fixing screws                       | 3 Nm                        |
| Number of wires                                   | 32                          |
| Number of cables for cable diameters 3.2 - 6.3 mm | 32                          |

---

### Approvals

---

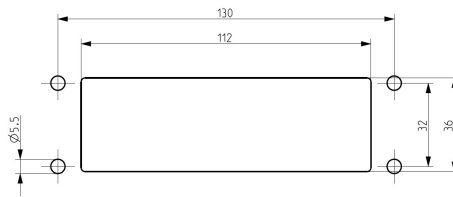
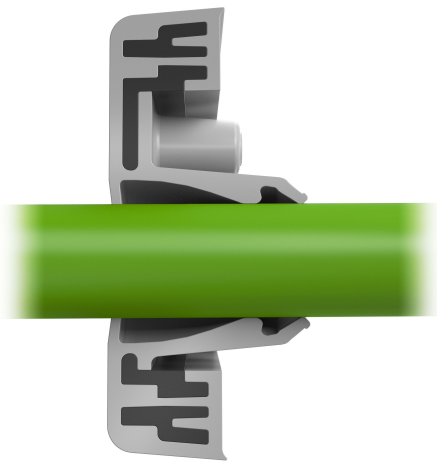
#### cUL Recognized

|                 |                 |
|-----------------|-----------------|
| cUL approval    | C22.2 No. 14-18 |
| cUL File Number | E489821         |
| cUL Recognized  | yes             |

#### UL Recognized

|                |                             |
|----------------|-----------------------------|
| UL approval    | UL 508A                     |
| UL File Number | E489821                     |
| UL Recognized  | yes                         |
| UL Type Rating | 1, 12, 4x (indoor use only) |

### Media



### Accessories

#### EMC brackets



Shield-connection rail enabling mounting of shield connection clips directly on cable entry system KDS and KES, Mounting type: Screw, Length: 35,3 mm, Width: 140 mm, Height: 16 mm, Profile: 10x3 mm

| Article number | Article name      | GTIN (EAN)    | Packaging unit |
|----------------|-------------------|---------------|----------------|
| <u>28626.0</u> | KDS-EMV-SAB 10/24 | 4044211219659 | 1 ST           |

#### Sheet-metal puncher



Sheet metal puncher for rectangular openings, Dimensions opening: 112 x 36 mm, Maximum wall thickness: 2.0 mm for stainless steel sheet, Material: steel

| Article number | Article name | GTIN (EAN)    | Packaging unit |
|----------------|--------------|---------------|----------------|
| <u>28752.0</u> | BL-VA KES    | 4044211221935 | 1 ST           |



Sheet metal puncher for rectangular openings, Dimensions opening: 112 x 36 mm, Maximum wall thickness: 2.0 mm for S 235 sheet, Material: steel

| Article number | Article name | GTIN (EAN)    | Packaging unit |
|----------------|--------------|---------------|----------------|
| <u>28744.0</u> | BL KES       | 4044211221942 | 1 ST           |