

Cable entry with membrane for unassembled cables, Mounting type: Snap-in, Length: 142 mm, Width: 44 mm, IP64, Colour: Grey

RAL: Ähnlich 7035

Business data

Article number	28816.6
Article name	KES-E 42/24 A GR
GTIN (EAN)	4044211234157
Packaging unit	10
Quantity unit	PC
Weight per piece (not including packaging)	49 g
Weight per piece (including packaging)	49.88 g
Unit of weight	G
Customs number	39259020
Country of origin	DE
Product description	Cable Entry
Colour	Grey

Technical data

Dimensions

Length	142 mm
Length of wall cutout	112 mm
Width	44 mm
Width of wall cutout	36 mm
Height	12 mm
Installation height	5 mm

Materials

Material	TPE
Flammability class UL 94	V-0
Working temperature, min.	-40 °C
Working temperature, max.	90 °C
Sealing material	TPE
Halogen-free	✓
Silicone-free	✓

Further technical data

Mounting type	Snap-on
Degree of protection	IP54
Sheet thickness min.	1.5 mm
Sheet thickness max.	2.5 mm
NEMA Type	1, 12
Number of wires	42
Number of cables for cable diameters 1.0 - 4.7 mm	1
Number of cables for cable diameters 1.0 - 5.0 mm	12
Number of cables for cable diameters 1.0 - 6.4 mm	17
Number of cables for cable diameters 1.0 - 7.2 mm	12

Environmental Product Compliance

REACH Conform	yes
REACH Reference date	2023-01-17
REACH Candidate Substance Note	No
RoHS Conform	yes

Approvals

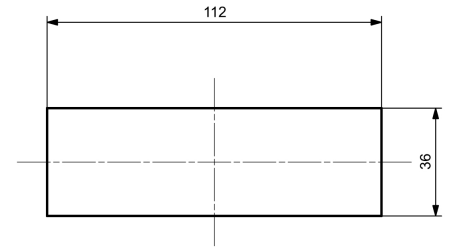
cUL Recognized

cUL approval	C22.2 No. 14-18
cUL File Number	E489821
cUL Recognized	1

UL Recognized

UL approval	UL 508A
UL File Number	E489821
UL Recognized	1
UL Type Rating	1, 12

Media



Accessories
