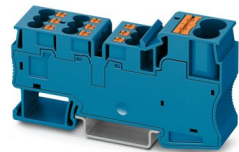


3002368

<https://www.phoenixcontact.com/au/products/3002368>

Please be informed that the data shown in this PDF document is generated from our online catalog. Please find the complete data in the user documentation. Our general terms of use for downloads are valid.



Potential collective terminal, nom. voltage: 1000 V, nominal current: 57 A, Line contact, connection method: Push-in connection, Rated cross section: 10 mm<sup>2</sup>, cross section: 0.5 mm<sup>2</sup> - 16 mm<sup>2</sup>, Load contact, connection method: Push-in connection, Rated cross section: 4 mm<sup>2</sup>, cross section: 0.5 mm<sup>2</sup> - 6 mm<sup>2</sup>, mounting: NS 35/7,5, color: blue

Commercial data

Item number	3002368
Packing unit	25 pc
Minimum order quantity	25 pc
Sales key	BE2219
Product key	BE2219
Catalog page	Page 123 (C-1-2019)
GTIN	4055626431079
Weight per piece (including packing)	49.98 g
Weight per piece (excluding packing)	46.1 g
Customs tariff number	85369010
Country of origin	IN

# PT 2X10/9X4 BU - Potential collective terminal



3002368

<https://www.phoenixcontact.com/au/products/3002368>

## Technical data

### Product properties

Product type	Potential distributor
Product family	PT
Number of connections	11
Number of rows	1
Potentials	1

### Insulation characteristics

Overvoltage category	III
Degree of pollution	2

### Electrical properties

Rated surge voltage	8 kV
Maximum power dissipation for nominal condition	1.02 W

### Connection data

Number of connections per level	11
Nominal cross section	4 mm <sup>2</sup>

### Line contact

Stripping length	20 mm
Connection in acc. with standard	IEC 60947-7-1
Conductor cross section rigid	0.5 mm <sup>2</sup> ... 16 mm <sup>2</sup>
Cross section AWG	20 ... 6 (converted acc. to IEC)
Conductor cross section flexible	0.5 mm <sup>2</sup> ... 10 mm <sup>2</sup>
Conductor cross section, flexible [AWG]	20 ... 8 (converted acc. to IEC)
Conductor cross-section flexible (ferrule without plastic sleeve)	0.5 mm <sup>2</sup> ... 10 mm <sup>2</sup>
Flexible conductor cross section (ferrule with plastic sleeve)	0.5 mm <sup>2</sup> ... 10 mm <sup>2</sup>
Nominal current	57 A
Maximum load current	101 A (with 2x10 mm <sup>2</sup> conductor cross section)
Nominal voltage	1000 V
Nominal cross section	10 mm <sup>2</sup>

### Load contact

Connection in acc. with standard	IEC 60947-7-1
Conductor cross section rigid	0.5 mm <sup>2</sup> ... 6 mm <sup>2</sup>
Cross section AWG	20 ... 10 (converted acc. to IEC)
Conductor cross section flexible	0.5 mm <sup>2</sup> ... 4 mm <sup>2</sup>
Conductor cross section, flexible [AWG]	20 ... 12 (converted acc. to IEC)
Conductor cross-section flexible (ferrule without plastic sleeve)	0.5 mm <sup>2</sup> ... 4 mm <sup>2</sup>
Flexible conductor cross section (ferrule with plastic sleeve)	0.5 mm <sup>2</sup> ... 4 mm <sup>2</sup>
2 conductors with the same cross section, flexible, with TWIN ferrule with plastic sleeve	0.5 mm <sup>2</sup> ... 1 mm <sup>2</sup>

# PT 2X10/9X4 BU - Potential collective terminal



3002368

<https://www.phoenixcontact.com/au/products/3002368>

Nominal current	32 A
Maximum load current	36 A (with 6 mm <sup>2</sup> conductor cross section)
Nominal voltage	1000 V
Nominal cross section	4 mm <sup>2</sup>

## Line contact Connection cross sections directly pluggable

Conductor cross section rigid	1 mm <sup>2</sup> ... 16 mm <sup>2</sup>
Conductor cross-section flexible (ferrule without plastic sleeve)	0.5 mm <sup>2</sup> ... 10 mm <sup>2</sup>
Flexible conductor cross section (ferrule with plastic sleeve)	0.5 mm <sup>2</sup> ... 10 mm <sup>2</sup>

## Load contact Connection cross sections directly pluggable

Conductor cross section rigid	0.5 mm <sup>2</sup> ... 6 mm <sup>2</sup>
Conductor cross-section flexible (ferrule without plastic sleeve)	0.5 mm <sup>2</sup> ... 4 mm <sup>2</sup>
Flexible conductor cross section (ferrule with plastic sleeve)	0.5 mm <sup>2</sup> ... 4 mm <sup>2</sup>

## Dimensions

Width	18.5 mm
Height	83.2 mm
Depth	42.4 mm
Depth on NS 35/7,5	47.9 mm

## Material specifications

Color	blue (RAL 5015)
Flammability rating according to UL 94	PA 6.6
Insulating material group	I
Insulating material	PA

## Mechanical properties

### Mechanical data

Open side panel	No
-----------------	----

## Environmental and real-life conditions

### Ambient conditions

Ambient temperature (operation)	-60 °C ... 110 °C (Operating temperature range incl. self-heating; for max. short-term operating temperature, see RTI Elec.)
Ambient temperature (storage/transport)	-25 °C ... 60 °C (for a short time, not exceeding 24 h, -60 °C to +70 °C)
Ambient temperature (assembly)	-5 °C ... 70 °C
Ambient temperature (actuation)	-5 °C ... 70 °C
Permissible humidity (operation)	20 % ... 90 %
Permissible humidity (storage/transport)	30 % ... 70 %

## Standards and regulations

Connection in acc. with standard	IEC 60947-7-1
	IEC 60947-7-1

# PT 2X10/9X4 BU - Potential collective terminal



3002368

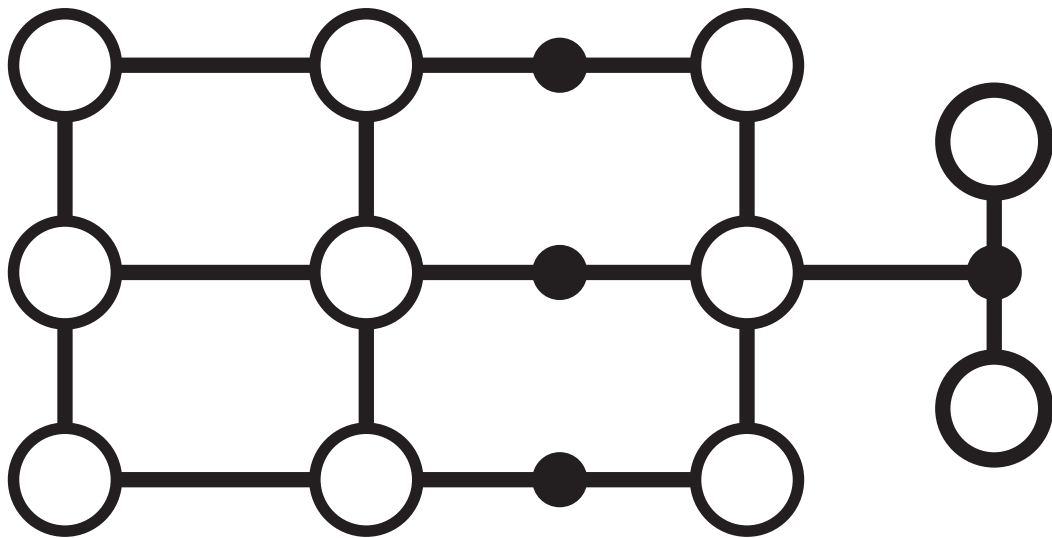
<https://www.phoenixcontact.com/au/products/3002368>

## Mounting

Mounting type	NS 35/7,5
---------------	-----------

## Drawings

Circuit diagram



# PT 2X10/9X4 BU - Potential collective terminal





3002368

<https://www.phoenixcontact.com/au/products/3002368>

## Approvals

To download certificates, visit the product detail page: <https://www.phoenixcontact.com/au/products/3002368>

 <b>cULus Recognized</b> Approval ID: E60425				
	Nominal voltage $U_N$	Nominal current $I_N$	Cross section AWG	Cross section $\text{mm}^2$
Use group B				
Output	600 V	25 A	20 - 10	-
Input	600 V	50 A	20 - 8	-
Use group C				
Output	600 V	25 A	20 - 10	-
Input	600 V	50 A	20 - 8	-
Use group F				
Output	1000 V	25 A	20 - 10	-
Input	1000 V	50 A	20 - 8	-

 <b>EAC</b> Approval ID: KZ7500651131219505	
---	--

# PT 2X10/9X4 BU - Potential collective terminal



3002368

<https://www.phoenixcontact.com/au/products/3002368>

## Classifications

### ECLASS

ECLASS-13.0	27250119
-------------	----------

### ETIM

ETIM 9.0	EC000897
----------	----------

### UNSPSC

UNSPSC 21.0	39121400
-------------	----------

# PT 2X10/9X4 BU - Potential collective terminal



3002368

<https://www.phoenixcontact.com/au/products/3002368>

## Environmental product compliance

EU RoHS	
Fulfills EU RoHS substance requirements	Yes, No exemptions
China RoHS	
Environment friendly use period (EFUP)	EFUP-E
	No hazardous substances above the limits
EU REACH SVHC	
REACH candidate substance (CAS No.)	No substance above 0.1 wt%

Phoenix Contact 2025 © - all rights reserved  
<https://www.phoenixcontact.com>

PHOENIX CONTACT PTY Ltd  
Unit 7, 2-8 South Street  
Rydalmere NSW 2116  
1300 786 411  
[customerservice@phoenixcontact.com.au](mailto:customerservice@phoenixcontact.com.au)