

FBS 5-5 - Plug-in bridge



3030190

<https://www.phoenixcontact.com/au/products/3030190>

Please be informed that the data shown in this PDF document is generated from our online catalog. Please find the complete data in the user documentation. Our general terms of use for downloads are valid.

Plug-in bridge, pitch: 5.2 mm, number of positions: 5, length: 23 mm, color: red



Commercial data

Item number	3030190
Packing unit	50 pc
Minimum order quantity	50 pc
Sales key	BE2Z2X
Product key	BE2Z2X
Catalog page	Page 70 (C-1-2019)
GTIN	4017918188535
Weight per piece (including packing)	4.244 g
Weight per piece (excluding packing)	4.21 g
Customs tariff number	85366990
Country of origin	DE

Technical data

Product properties

Product type	Plug-in bridge
Number of positions	5
Pitch	5.2 mm

Electrical properties

Maximum load current	24 A (The current values for the jumpers can deviate when used in different modular terminal blocks. The precise values can be found in the accessories data for the respective modular terminal blocks.)
----------------------	---

Connection data

Maximum load current	24 A (The current values for the jumpers can deviate when used in different modular terminal blocks. The precise values can be found in the accessories data for the respective modular terminal blocks.)
----------------------	---

Dimensions

Width	24.6 mm
Height	23 mm
Depth	3 mm
Length	23 mm
Pitch	5.2 mm

Material specifications

Color	red (RAL 3001)
Material	Copper
Flammability rating according to UL 94	V0
Insulating material	PA

Environmental and real-life conditions

Ambient conditions

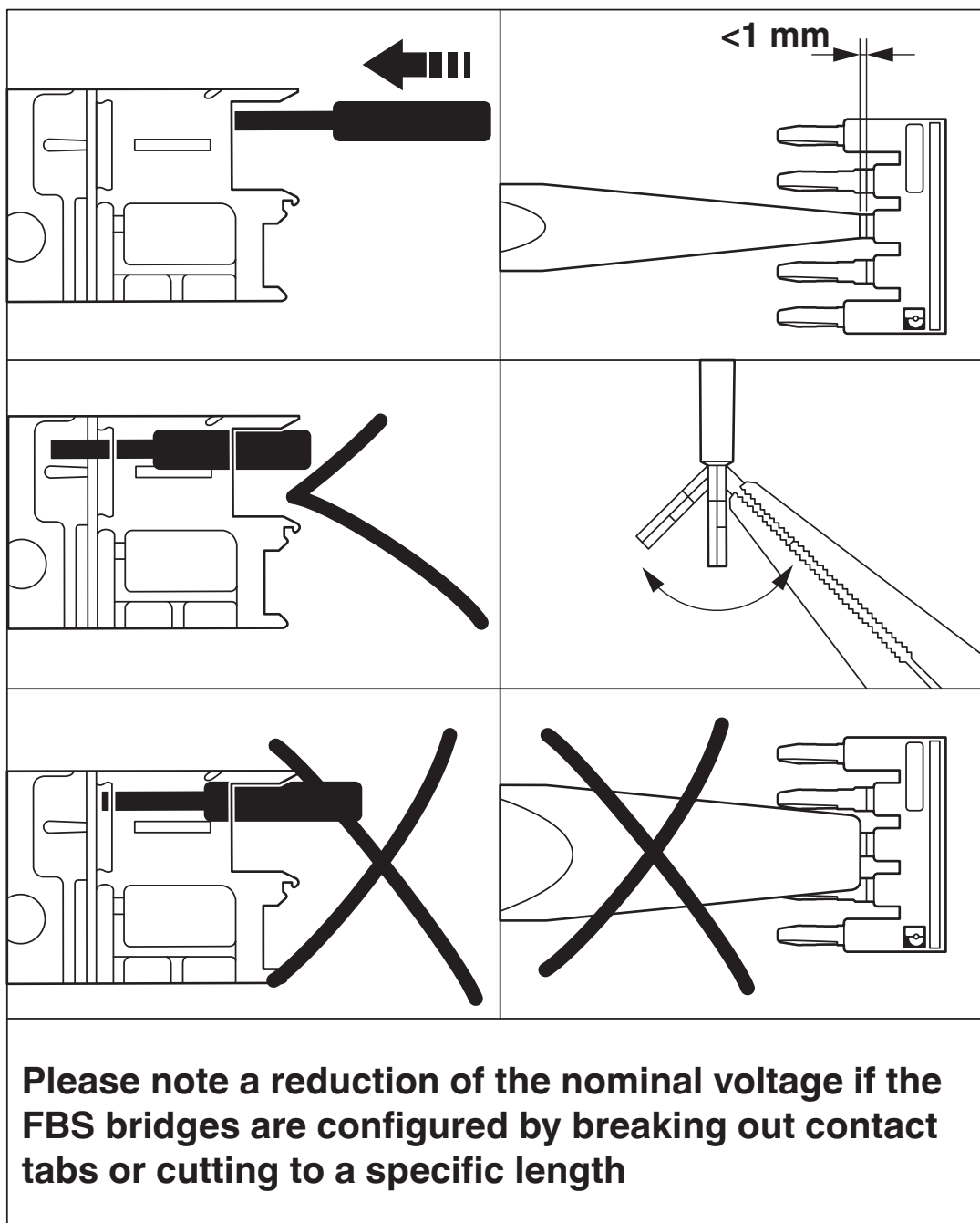
Ambient temperature (operation)	-60 °C ... 110 °C (Operating temperature range incl. self-heating; for max. short-term operating temperature, see RTI Elec.)
Ambient temperature (storage/transport)	-25 °C ... 60 °C (for a short time, not exceeding 24 h, -60 °C to +70 °C)
Ambient temperature (assembly)	-5 °C ... 70 °C
Ambient temperature (actuation)	-5 °C ... 70 °C
Permissible humidity (operation)	20 % ... 90 %
Permissible humidity (storage/transport)	30 % ... 70 %

Mounting

Mounting type	Plug-in mounting
---------------	------------------

Drawings

Schematic diagram



FBS 5-5 - Plug-in bridge



3030190
<https://www.phoenixcontact.com/au/products/3030190>

Classifications

ECLASS

ECLASS-13.0	27250303
-------------	----------

ETIM

ETIM 9.0	EC000489
----------	----------

UNSPSC

UNSPSC 21.0	39121400
-------------	----------

FBS 5-5 - Plug-in bridge



3030190

<https://www.phoenixcontact.com/au/products/3030190>

Environmental product compliance

EU RoHS

Fulfills EU RoHS substance requirements	Yes, No exemptions
---	--------------------

China RoHS

Environment friendly use period (EFUP)	EFUP-E
	No hazardous substances above the limits

EU REACH SVHC

REACH candidate substance (CAS No.)	No substance above 0.1 wt%
-------------------------------------	----------------------------

EF3.0 Climate Change

CO2e kg	0.02 kg CO2e
---------	--------------

Phoenix Contact 2025 © - all rights reserved

<https://www.phoenixcontact.com>

PHOENIX CONTACT PTY Ltd

Unit 7, 2-8 South Street

Rydalmere NSW 2116

1300 786 411

customerservice@phoenixcontact.com.au