

Data Sheet for Article: MG954005-A

Current transformer 50/5A 30x10, class 3

Version Dry type transformer, air insulation, Input current 50A, IP Rating IP20, Product category Normal installation (DIN EN 61869-2), Class 3



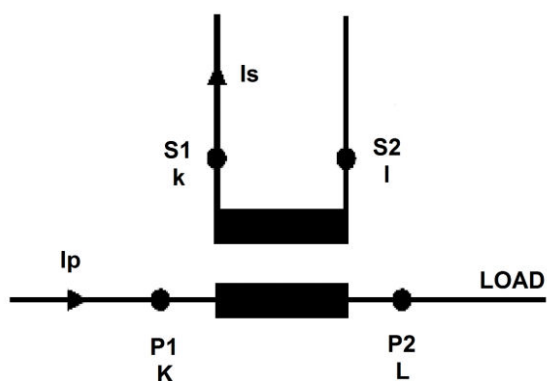
Technical Data

| | |
|--|---|
| Note | <p>The converter is not allowed to be operated with open secondary side, because this leads to a dangerous overvoltage at the secondary side and overheating of the converter!!! (EN60044-1/A2)</p> <p>Therefore, when disconnecting the measuring device, meter or power analyzer, short-circuit the secondary side.</p> |
| Intended use | <p>for cables up to diameter 27mm</p> <p>for copper bars up to 30 x 10mm</p> |
| Product standard | EN 61869-2 |
| Cut-out size (mm) | 30x10 |
| Specifications | |
| Rated current primary side I _{pr} (A) | 50 |
| Rated frequency (Hz) | 50 |
| Frequency range | 47 - 63Hz |
| Thermal rated continuous current according to EN60044-1 | |
| Short-time current I _{th} | < 60I _{pr} |
| Rated dynamic current I _{dyn} | 2.5I _{th} |
| Safety factor | ≤ 5 |
| Rated current secondary side I _{sr} | 5A |

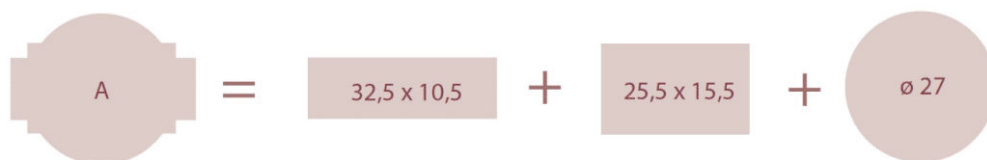
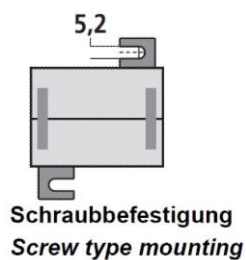
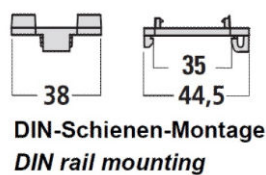
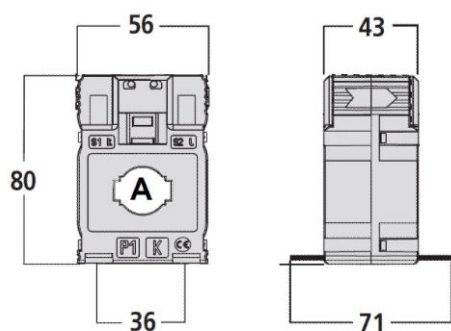
Technical Data - continued

| | |
|--|--|
| Thermal power loss | ≤ 7W at I _{cth} 125°C Maximum temperature cable/busbar. |
| Insulation requirements | |
| Version | Dry type transformer, air insulation |
| Max. Operating voltage U _m | 0.72kV r.m.s. |
| Isolation test voltage | 3 kV R.M.S. 50 Hz/1 min |
| Isolation | Class B (EN60044-1) |
| Working conditions | |
| Product category | Normal installation (DIN EN 61869-2) |
| Reference temperature (°C) | 23°C ± 1°C |
| Temperature range - Operation (°C) | -25 to +50 |
| Daily average temperature | ≤ 30°C |
| Temperature range - Transport/storage (°C) | -40 to +85 |
| Relative humidity (%) | ≤ 85 |
| Climatic proofing | Suitable for tropical climate |
| Housing | |
| Housing material | Polycarbonate, self-extinguishing Class V0 according to UL-94 |
| IP Rating | IP20 |
| Mounting method | screwable for wall mounting snap-on DIN rail 35 mm |
| DIN rail | TH35-15 (EN60715) |
| Gewicht (g) | 260 |
| Connections | |
| Winding primary side | Continuous cable |
| Torque | busbar fixing: 0,2Nm |
| Winding secondary side | Screw terminals |
| Terminal labeling | Winding secondary side s1(k) - s2(l) Winding primary side P1(K) - P2(L) |
| Accuracy classes | |
| Load current error | For class 3 and 100% I _n : ±3% For class 3 and 120% I _n : ±3% |
| Burden | Class 3 (2.5VA) |

Schaltbild



Maßbild



SCHRACK Technik GmbH, AT-1235 Wien, Seybelgasse 13

www.schrack.com

Article Table

| DESCRIPTION | Order No. |
|---|------------|
| Current transformer 50/5A 30x10, class 3 | |
| Version Dry type transformer, air insulation, Input current 50A, IP Rating IP20, Product category Normal installation (DIN EN 61869-2), Class 3 | MG954005-A |
| Optional Accessories | |
| Digital CT kWh Meter 1A/5A (6A), 3phase, 2 tariffs, MID | |
| Measurement of supply and reference (2 directions) | MGX20006 |
| Digital CT kWh Meter 1A/5A(6A), 3phase, 2 tariffs, MID, M-Bus | |
| Measurement of supply and reference (2 directions) | MGX20306 |
| Digital CT kWh Meter 1A/5A(6A), 3phase, 2 tariffs MID, Modbus | |
| Measurement of supply and reference (2 directions), Modbus: selectable baud rates 300/600/1200/4800/9600 | MGX20406 |