

AI-TWIN 2X 6 -14 GN - Ferrule



1213205

<https://www.phoenixcontact.com/au/products/1213205>

Please be informed that the data shown in this PDF document is generated from our online catalog. Please find the complete data in the user documentation. Our general terms of use for downloads are valid.

Ferrule, Length contact range: 14 mm, sleeve length: 25 mm, color: green



Your advantages

- These special ferrules allow chain bridges to be set up with ease
- The TWIN ferrules provide a practical way of crimping two conductors in one ferrule
- Different versions of the individual TWIN ferrules can be selected for specific applications

Commercial data

Item number	1213205
Packing unit	100 pc
Minimum order quantity	100 pc
Sales key	BH3413
Product key	BH3413
Catalog page	Page 486 (C-3-2019)
GTIN	4055626280851
Weight per piece (including packing)	0.718 g
Weight per piece (excluding packing)	0.671 g
Customs tariff number	85369010
Country of origin	DE

AI-TWIN 2X 6 -14 GN - Ferrule

1213205

<https://www.phoenixcontact.com/au/products/1213205>

Technical data

Product properties

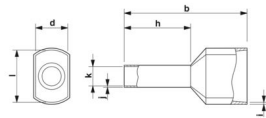
Product type	Cable end sleeve
Conductor category	stranded conductors, class 2, 5, 6 / B, C, K, M
Product property	Made from soft tin-plated electrolytic copper
	Correspond to the requirements of UL 486F
	Plastic collar made of polypropylene
	Halogen-free
	Long/short-term temperature: +105°C/+120°C

Connection data

Conductor connection

Conductor cross section flexible max.	6 mm ²
Conductor cross section AWG max.	10
Stripping length	19 mm

Dimensions

Dimensional drawing	
Sleeve length	25 mm
Length contact range	14 mm
Maximum stripping length	19 mm
Ferrule diameter	4.9 mm
Sleeve wall thickness	0.2 mm
Insulating collar thickness	0.4 mm
Inner dimensions of the insulating collar	5.9 mm

Material specifications

Color	green (RAL 6021)
Material	CU-DHP
Flammability rating according to UL 94	HB
Coating	galvanically tin-plated
Surface characteristics	Tin-plated
Components	free from silicone and halogen

Mechanical properties

Technical data

Sleeve length	25 mm
---------------	-------

AI-TWIN 2X 6 -14 GN - Ferrule



1213205

<https://www.phoenixcontact.com/au/products/1213205>

Environmental and real-life conditions

Ambient conditions

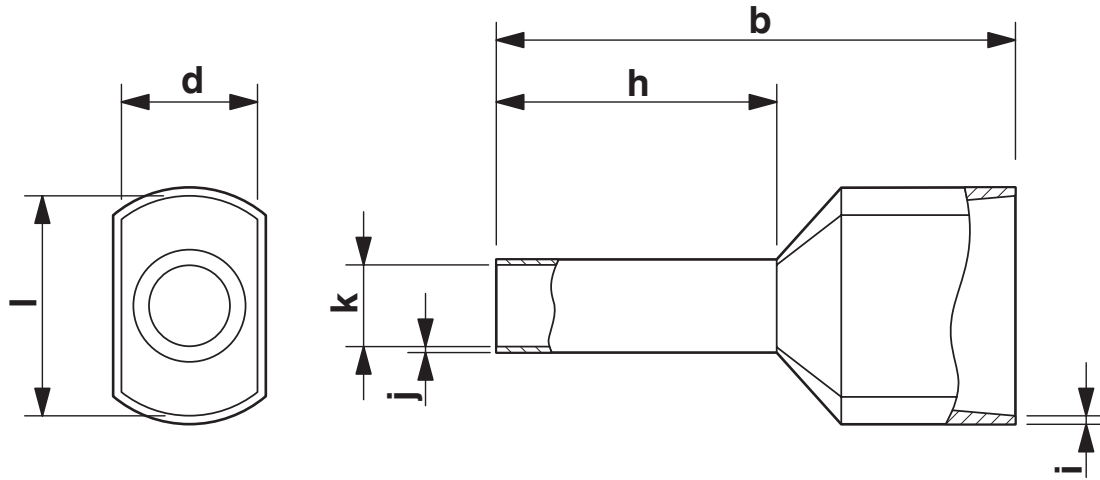
Permanent temperature	105 °C (-40 °C no load / 0 °C dynamic load)
Short-term temperature	120 °C

Standards and regulations

Design according to standard	DIN 46228-4
------------------------------	-------------

Drawings

Dimensional drawing



Sleeve length (b), length contact range (h), insulating collar inner dimension (d), sleeve diameter (k), insulating collar thickness (i), sleeve wall thickness (j)

AI-TWIN 2X 6 -14 GN - Ferrule



1213205

<https://www.phoenixcontact.com/au/products/1213205>

Approvals

To download certificates, visit the product detail page: <https://www.phoenixcontact.com/au/products/1213205>



cULus Listed

Approval ID: E488001

AI-TWIN 2X 6 -14 GN - Ferrule



1213205

<https://www.phoenixcontact.com/au/products/1213205>

Classifications

ECLASS

ECLASS-13.0

27400201

ETIM

ETIM 9.0

EC000005

UNSPSC

UNSPSC 21.0

27121700

AI-TWIN 2X 6 -14 GN - Ferrule



1213205

<https://www.phoenixcontact.com/au/products/1213205>

Environmental product compliance

EU RoHS

Fulfills EU RoHS substance requirements	Yes, No exemptions
---	--------------------

China RoHS

Environment friendly use period (EFUP)	EFUP-E
	No hazardous substances above the limits

EU REACH SVHC

REACH candidate substance (CAS No.)	No substance above 0.1 wt%
-------------------------------------	----------------------------

Phoenix Contact 2025 © - all rights reserved
<https://www.phoenixcontact.com>

PHOENIX CONTACT PTY Ltd
Unit 7, 2-8 South Street
Rydalmere NSW 2116
1300 786 411
customerservice@phoenixcontact.com.au