

# CATAN CONTROL PANEL - Display



1371366

<https://www.phoenixcontact.com/au/products/1371366>

Please be informed that the data shown in this PDF document is generated from our online catalog. Please find the complete data in the user documentation. Our general terms of use for downloads are valid.

Touch display for local override operation and configuration of Catan controllers and Catan extension modules. Display size 2.4". Connection via USB-C connector.



## Product description

The Catan Control Panel is a touch display that can be optionally plugged into the Catan controller and all Catan extension modules as an accessory. The status of each I/O channel can be viewed via a clearly structured user interface. The current values can be overridden for both the output channels and the input channels. The display can also be operated remotely from the basic device, e.g., in a control cabinet door. A mounting kit and a USB-C extension are available for mounting.

## Your advantages

- A standardized plug-in display for all Catan modules
- Intuitive operation with status indicator and overriding of the I/O channels of the underlying module
- Local operation even without a connection to the controller
- Additional information can be viewed for each channel, such as data point designations
- Easy-to-read, high-contrast IPS display with capacitive touch sensor
- Access protection via PIN

## Commercial data

Item number	1371366
Packing unit	1 pc
Minimum order quantity	1 pc
Sales key	DRHAFA
Product key	DRHAFA
GTIN	4063151730024
Weight per piece (including packing)	68 g
Weight per piece (excluding packing)	58 g
Customs tariff number	85371091
Country of origin	DE

# CATAN CONTROL PANEL - Display



1371366

<https://www.phoenixcontact.com/au/products/1371366>

## Technical data

### Notes

#### Note on application

Note on application	Only for industrial use
---------------------	-------------------------

### Product properties

Product type	Operator panel
Product family	Catan
Installation location	indoor use
Weight	58 g

#### Insulation characteristics

Protection class	III (IEC 61140, EN 61140, VDE 0140-1)
------------------	---------------------------------------

#### Display

Display type	6.1 cm / 2.4"-TFT
Screen resolution	320 x 240 Pixel(s)

### Interfaces

#### Connection to Catan controller or Catan extension module

Number of interfaces	1
Connection method	USB 2.0 full speed, connector type C
Transmission speed	max. 12 Mbps

### Electrical properties

#### Supply

Supply voltage	5 V DC (Via USB interface of the Catan modules)
Max. current consumption	max. 160 mA

### Mounting

Mounting type	Snap-on assembly (Snap onto the Catan controller or Catan extension module)
	Remote mounting in the control cabinet door (Cable: see accessories, wall thickness: 1 mm ... 4 mm)
Mounting position	horizontal

### Material specifications

Color (Lower housing part)	gray (RAL 7042)
Color (Upper housing part)	light gray (RAL 7035)
Material ()	Polycarbonate (Housing)

### Environmental and real-life conditions

#### Ambient conditions

# CATAN CONTROL PANEL - Display

1371366

<https://www.phoenixcontact.com/au/products/1371366>



Degree of protection	IP20
Ambient temperature (operation)	-5 °C ... 50 °C (up to 3000 m above mean sea level)
Ambient temperature (storage/transport)	-40 °C ... 85 °C
Permissible humidity (operation)	5 % ... 95 % (non-condensing)
Permissible humidity (storage/transport)	5 % ... 95 % (non-condensing)

## Dimensions

Width	44.6 mm
Height	15.3 mm
Length	107.6 mm

# CATAN CONTROL PANEL - Display

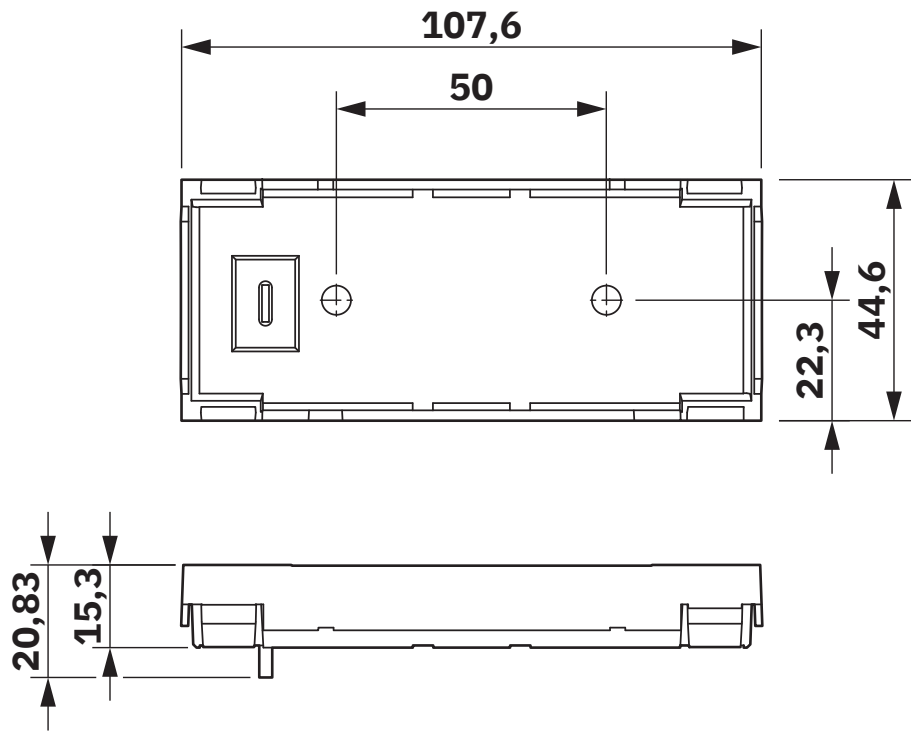


1371366

<https://www.phoenixcontact.com/au/products/1371366>

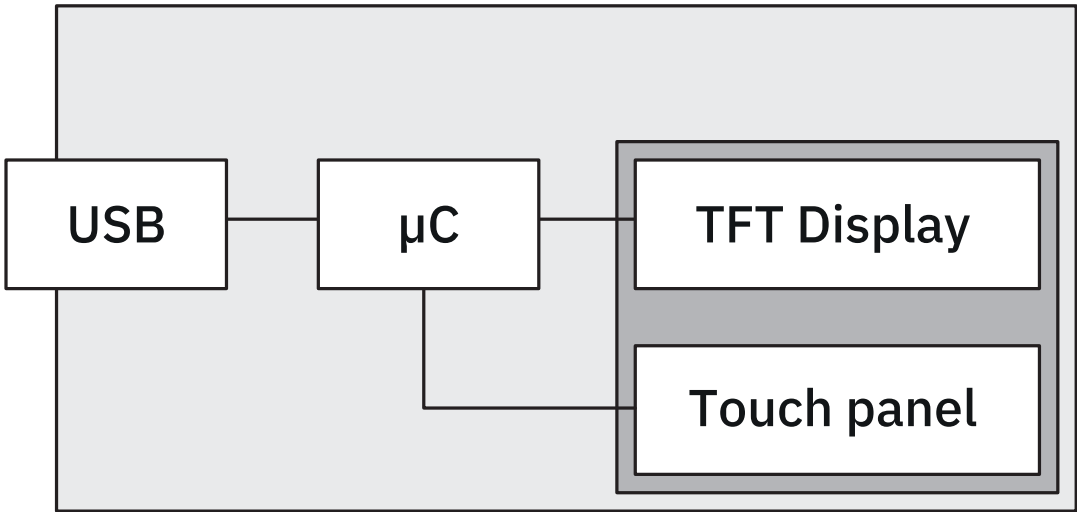
## Drawings

Dimensional drawing



Dimensions

Block diagram



Internal wiring of the terminal points

# CATAN CONTROL PANEL - Display

1371366

<https://www.phoenixcontact.com/au/products/1371366>



## Approvals

🔗 To download certificates, visit the product detail page: <https://www.phoenixcontact.com/au/products/1371366>



**cULus Listed**

Approval ID: E238705

# CATAN CONTROL PANEL - Display



1371366

<https://www.phoenixcontact.com/au/products/1371366>

## Classifications

### ECLASS

ECLASS-13.0	27330201
ECLASS-15.0	27330201

### ETIM

ETIM 9.0	EC001412
----------	----------

# CATAN CONTROL PANEL - Display



1371366  
<https://www.phoenixcontact.com/au/products/1371366>

## Environmental product compliance

EU RoHS	
Fulfills EU RoHS substance requirements	Yes
Exemption	7(c)-I
China RoHS	
Environment friendly use period (EFUP)	EFUP-50
	An article-related China RoHS declaration table can be found in the download area for the respective article under "Manufacturer declaration". For all articles with EFUP-E, no China RoHS declaration table issued and required.
EU REACH SVHC	
REACH candidate substance (CAS No.)	No substance above 0.1 wt%

Phoenix Contact 2025 © - all rights reserved  
<https://www.phoenixcontact.com>

PHOENIX CONTACT PTY Ltd  
Unit 7, 2-8 South Street  
Rydalmere NSW 2116  
1300 786 411  
[customerservice@phoenixcontact.com.au](mailto:customerservice@phoenixcontact.com.au)