

## 28646.6 KES-GB 21/24 GR



Cable entry with membrane for unassembled cables, Mounting type: Snap-on and srew, Length: 147 mm, Width: 58 mm, IP66, Colour: Grey

**RAL:** Ähnlich 7035

### Business data

Article number	28646.6
Article name	KES-GB 21/24 GR
GTIN (EAN)	4044211220167
Packaging unit	10
Quantity unit	PC
Weight per piece (not including packaging)	115 g
Weight per piece (including packaging)	122.2 g
Unit of weight	G
Customs number	39259020
Country of origin	DE
Prio-Article	28646.6
Product description	Cable Entry

### Technical data

#### Dimensions

Length	149.6 mm
Length of wall cutout	112 mm
Width	58 mm
Width of wall cutout	36 mm
Installation height	14.5 mm

#### Materials

Material	Polyamide 6.6
Glass-fibre reinforced	✓
Flammability class UL 94	V-0
Working temperature, min.	-40 °C
Working temperature, max.	90 °C
Sealing material	TPE
Halogen-free	✓
Silicone-free	✓

#### Further technical data

Mounting type	Snap-on and screw-on
Degree of protection	IP66
Sheet thickness min.	1.5 mm
Sheet thickness max.	2 mm
NEMA Type	1, 12, 4x (indoor use only)
Number of screw holes	4
Fixing screws	M4 (ISO 4762 / DIN 912)
Torque of the fixing screws	3 Nm
Number of wires	21
Number of cables for cable diameters 3.2 - 6.3 mm	1
Number of cables for cable diameters 4.0 - 7.5 mm	14
Number of cables for cable diameters 5.5 - 10.5 mm	4
Number of cables for cable diameters 8.0 - 12.5 mm	2

---

### Approvals

---

#### cUL Recognized

---

cUL approval	C22.2 No. 14-18
--------------	-----------------

---

cUL File Number	E489821
-----------------	---------

---

cUL Recognized	1
----------------	---

---

#### UL Recognized

---

UL approval	UL 508A
-------------	---------

---

UL File Number	E489821
----------------	---------

---

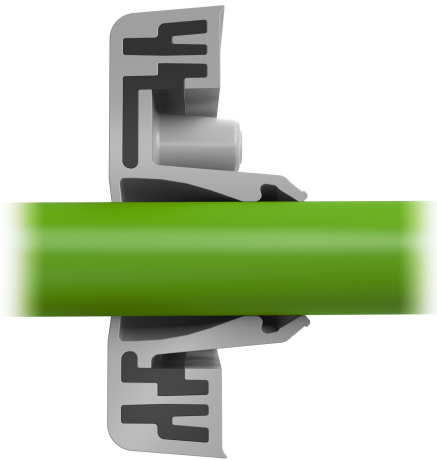
UL Recognized	1
---------------	---

---

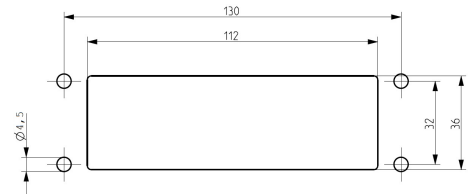
UL Type Rating	1, 12, 4x (indoor use only)
----------------	-----------------------------

---

### Media



**C** **AV**<sup>®</sup> **US**



### Accessories

#### EMC brackets



Shield-connection rail enabling mounting of shield connection clips directly on cable entry system KDS and KES, Mounting type: Screw, Length: 35,3 mm, Width: 140 mm, Height: 16 mm, Profile: 10x3 mm

Article number	Article name	GTIN (EAN)	Packaging unit
<u>28626.0</u>	KDS-EMV-SAB 10/24	4044211219659	1 ST

#### Sheet-metal puncher



Sheet metal puncher for rectangular openings, Dimensions opening: 112 x 36 mm, Maximum wall thickness: 2.0 mm for stainless steel sheet, Material: steel

Article number	Article name	GTIN (EAN)	Packaging unit
<u>28752.0</u>	BL-VA KES	4044211221935	1 ST



Sheet metal puncher for rectangular openings, Dimensions opening: 112 x 36 mm, Maximum wall thickness: 2.0 mm for S 235 sheet, Material: steel

Article number	Article name	GTIN (EAN)	Packaging unit
<u>28744.0</u>	BL KES	4044211221942	1 ST