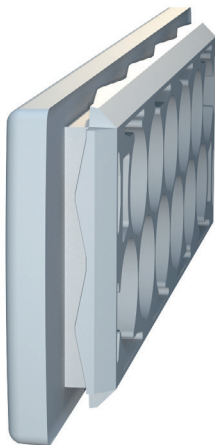


KES-E Cable entries



Many lines in a confined space

With the cable entry system **KES-E** many cables (without connector plugs) with different diameters from 1.0 mm to 16.1 mm can be inserted on a confined space. The cable entry system can be inserted into the provided opening without tools (Variant "A" for wall thicknesses from 1.5 mm–2.5 mm and variant "B" for wall thicknesses from 2.5 mm–4.0 mm). In order to insert cables the membrane (with marked centring point) must be pierced, now the cables can be easily guided through. The TPE material ensures IP64 tightness.

Variants



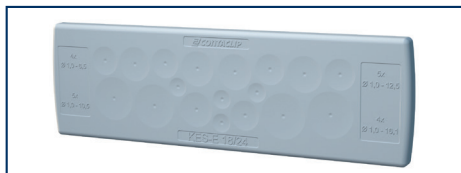
KES-E 12/24



KES-E 14/24



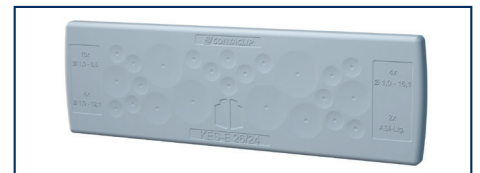
KES-E 17/24



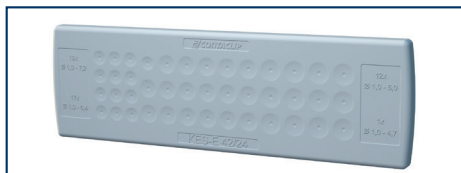
KES-E 18/24



KES-E 19/24



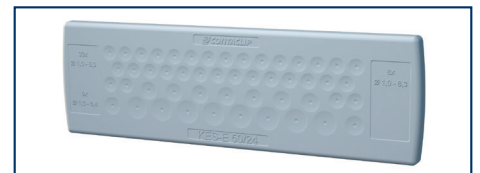
KES-E 26/24



KES-E 42/24



KES-E 48/24



KES-E 50/24



Your advantages

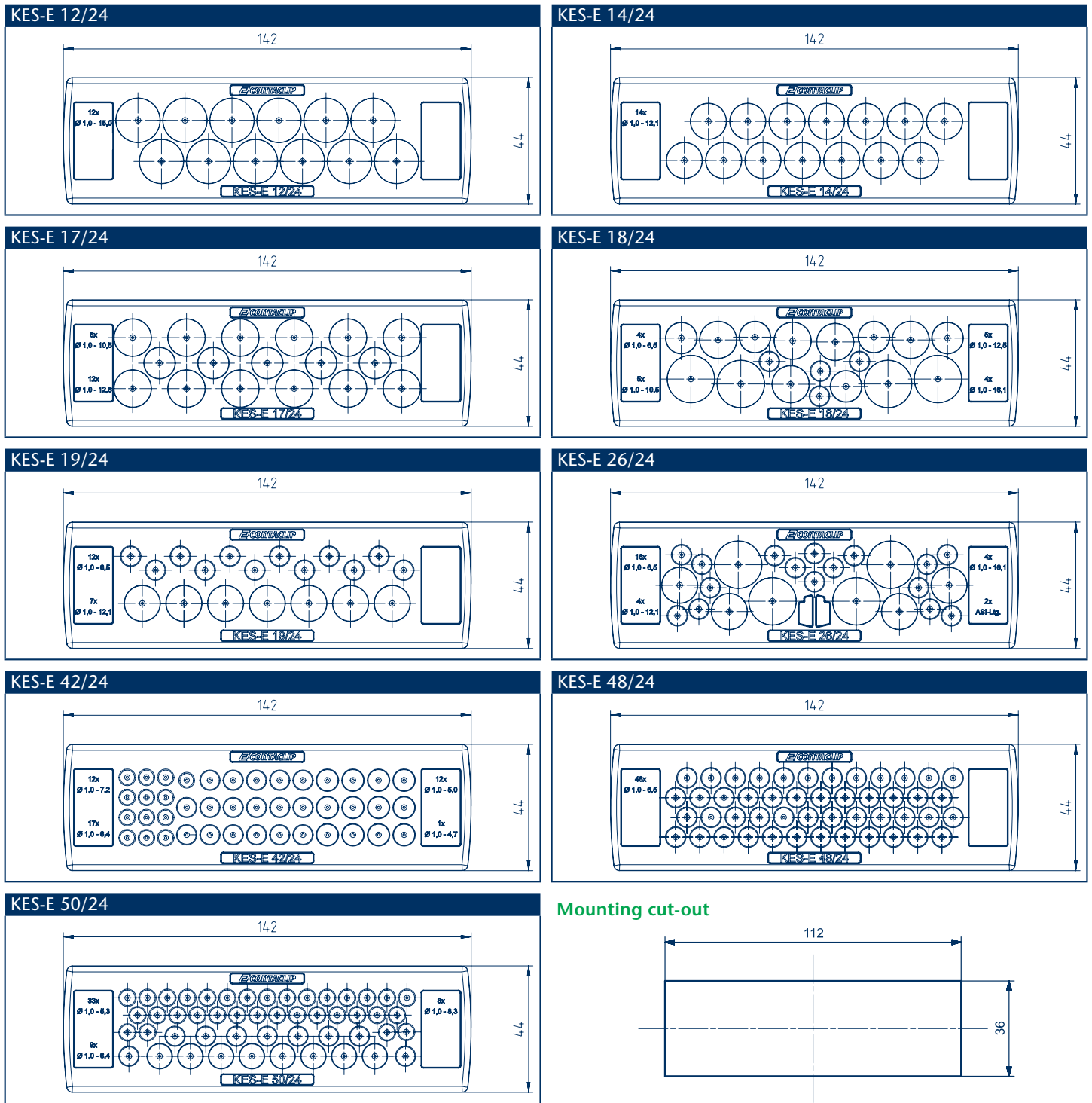
- Toolless assembly
- High stability
- Simple assembly (with marked centring point)
- High-density assemblies
- Hygienic design
- For various wall thicknesses



Features

- Material: TPE
- Flammability: UL 94 V-0
- Temperature range: -40 °C to +90 °C (static)
- Halogen-free, silicone-free
- Wall thickness A: 1.5–2.5 mm and B: 2.5–4.0 mm
- Protection: IP64

Dimension diagram



Type	Cat. no. variant A	For wall thicknesses in mm	Cat. no. variant B	For wall thicknesses in mm	Number of cables x diameter of the cable in mm	Protection	Qty.
KES-E 12/24...GR	28810.6	1.5 – 2.5	28840.6	2.5 – 4.0	12 x 1.0 – 15.0	IP64	10
KES-E 14/24...GR	28811.6	1.5 – 2.5	28841.6	2.5 – 4.0	14 x 1.0 – 12.1	IP64	10
KES-E 17/24...GR	28812.6	1.5 – 2.5	28842.6	2.5 – 4.0	5 x 1.0 – 10.5 12 x 1.0 – 12.6	IP64	10
KES-E 18/24...GR	28813.6	1.5 – 2.5	28843.6	2.5 – 4.0	4 x 1.0 – 6.5 5 x 1.0 – 10.5 5 x 1.0 – 12.5 4 x 1.0 – 16.1	IP64	10
KES-E 19/24...GR	28814.6	1.5 – 2.5	28844.6	2.5 – 4.0	12 x 1.0 – 6.5 7 x 1.0 – 12.1	IP64	10
KES-E 26/24...GR	28815.6	1.5 – 2.5	28845.6	2.5 – 4.0	16 x 1.0 – 6.5 4 x 1.0 – 12.1 4 x 1.0 – 16.1 2 x ASI	IP64	10
KES-E 42/24...GR	28816.6	1.5 – 2.5	28846.6	2.5 – 4.0	12 x 1.0 – 7.2 17 x 1.0 – 6.4 12 x 1.0 – 5.0 1 x 1.0 – 4.7	IP64	10
KES-E 48/24...GR	28817.6	1.5 – 2.5	28847.6	2.5 – 4.0	48 x 1.0 – 6.5	IP64	10
KES-E 50/24...GR	28818.6	1.5 – 2.5	28848.6	2.5 – 4.0	33 x 1.0 – 5.3 9 x 1.0 – 6.4 8 x 1.0 – 8.3	IP64	10