

Data Sheet for Article: MM216521--

Complete enclosure with push button red, `0 `, 1NO+1NC

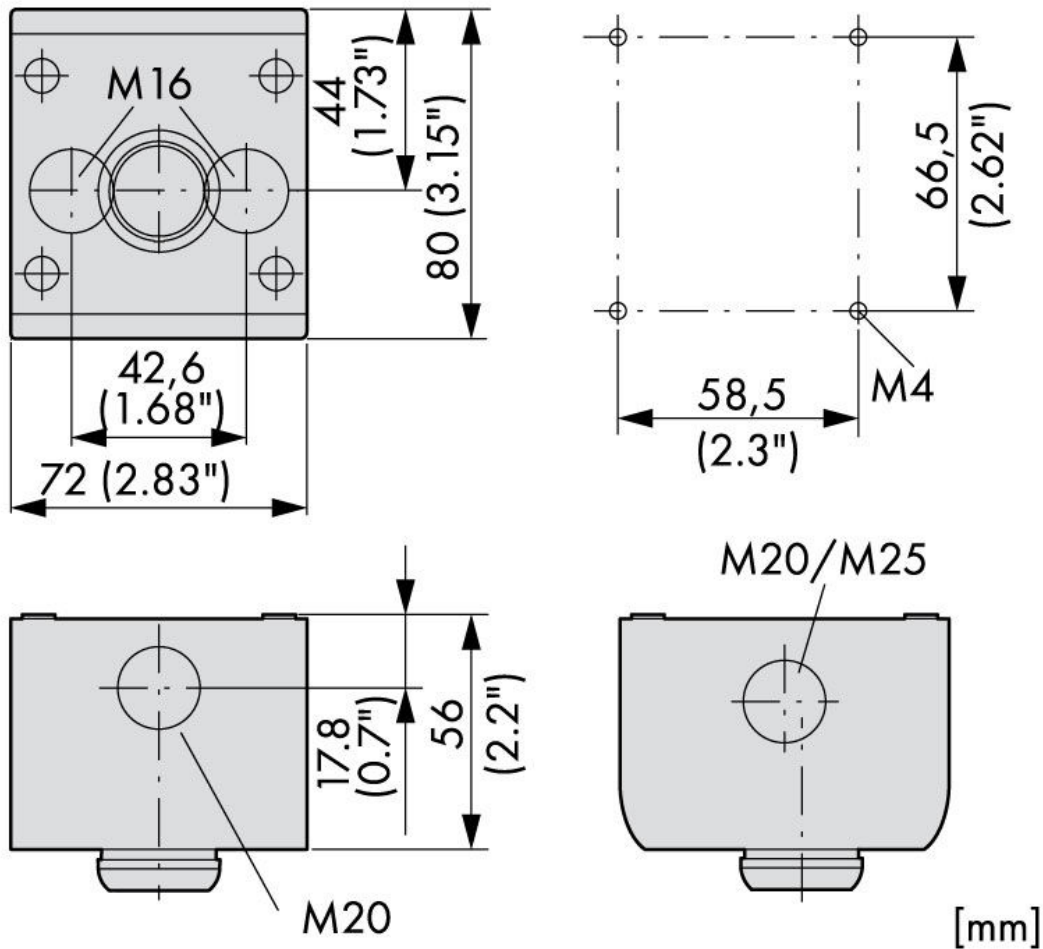
IP67



Technical Data

Series	MM-SET
Illumination	non-illuminated
Colour	Black/light gray
Device category	1
Make-up	Surface mount housing
IP Rating	IP69K IP67
shock resistance	30G
Ambient temperature Open (°C)	-25°C...+70°C
Climatic proofing	Damp heat, constant, to IEC 60068-2-78 Damp heat, cyclic, to IEC 60068-2-30
Standards	IEC/EN 60947, VDE 0660
Actuating force (N)	5
Lifespan, mechanical	5000000 Operations
Operating frequency	< 3600 Operations
Mounting position	any
Type No.	M22-D-R-X0/KC11/I

Maßbild



Article Table

DESCRIPTION	Order No.
Complete enclosure with push button red, `0`, 1NO+1NC IP67	MM216521