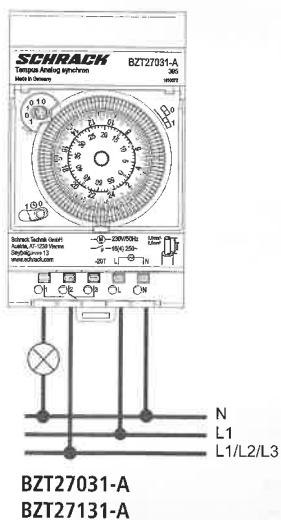


**TEMPUS ANALOG**

**BZT27031-A**

**BZT27131-A**

- Analog-Zeitschaltuhr 24 h
- Analogue time switch 24 h
- Minuterie analogique 24 h
- Interruttore orario analogico 24 h
- Reloj programador analógico 24 h
- Relógio temporizador analógico 24 h
- Analoge schakelklok 24 h



**Service address/Hotline**

**Service address**  
Schrack Technik GmbH,  
Austria, AT-1230 Vienna,  
Seybelgasse 13,  
www.schrack.com

**ENGLISH**

**Basic safety instructions**

**WARNING**  
Danger of death through electric shock or fire!  
➤ Installation should only be carried out by a qualified electrician!

**Designated use**

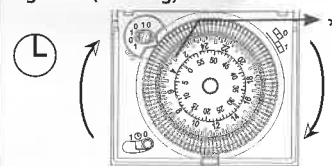
- The time switch can be used for lighting, ventilation, fountains, advertising hoardings etc.
- Only for use in closed, dry rooms
- Installation on DIN top hat rail (in accordance with DIN EN 60715)
- The switching of any external wire is permitted, switching of SELV is not permitted.

**Disposal**

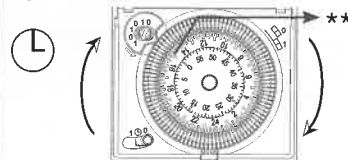
Dispose of device in environmentally sound manner

**Set time**

e.g. 3:00 (morning)

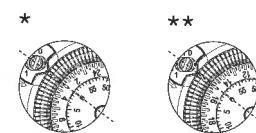
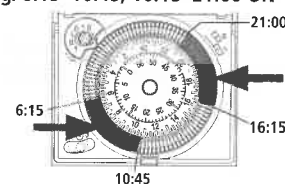


e.g. 15:00 (afternoon)

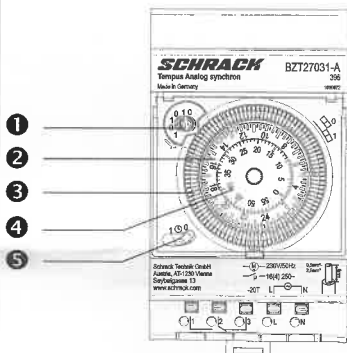


**Set switching times**

e.g. 6:15–10:45; 16:15–21:00 ON



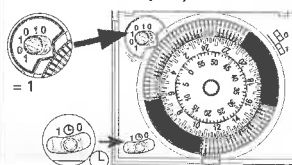
**Description**



- 1 Switching pre-selection/manual setting
- 2 Program timing disc
- 3 Switching segments (1 = 15 mins)
- 4 Knob for setting time (hours and minutes) can be adjusted anti-clockwise and clockwise; turn knob firmly to left
- 5 Three way switch: Permanent ON – AUTO – Permanent OFF

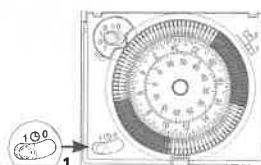
**Set manual operation/ switching pre-selection**

vorab 3:00 EIN (= 1)



The time switch operates the set switching times, i.e. it returns to program.

**Set 1 – 0 permanent switching**



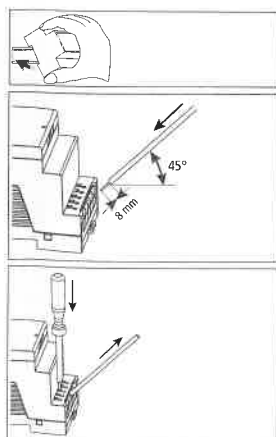
Program is not operated.  
1 = Permanent ON  
0 = Permanent OFF

**Connection/installation**

**WARNING**  
Warning, danger of death through electric shock!  
➤ Must be installed by qualified electrician!  
➤ Disconnect power source!  
➤ Cover or shield any adjacent live components.  
➤ Ensure device cannot be switched on!  
➤ Check power supply is connected!  
➤ Earth and bypass!

**for BZT27131-A only**

- Quarz movement only starts in a few minutes after power is switched on.
- Full power reserve is achieved after approx. 5 days.



**Technical Data**

	<b>BZT27031-A</b>	<b>BZT27131-A</b>
Operating voltage:	230 V~, +10 %/-15 % 50 Hz	110–230 V~, 50–60 Hz
Power consumption:	max. 1 VA	max. 1 VA
Contact:	two-way switch	two-way switch
Gap:	<3 mm (μ)	<3 mm (μ)
Contact material:	Ag	Ag
Switching capacity:	16 A, 250 V~, cos φ = 1 4 A, 250 V~, cos φ = 0,6	16 A, 250 V~, cos φ = 1 4 A, 250 V~, cos φ = 0,6
Switching capacity min.:	24 V / 100 mA AC	24 V / 100 mA AC
Fluorescent lamp load:	1100 W parallel-corrected 2 x 40 W (4,7 μF)	1100 W parallel-corrected 2 x 40 W (4,7 μF)
Perm. ambient temperature:	-20 °C ... +55 °C	-20 °C ... +55 °C
Protection class:	II in acc. with EN 60730-1 for designated installation	II in acc. with EN 60730-1 for designated installation
Protection rating:	IP 20 in accordance with EN 60529	IP 20 in acc. with EN 60529
Time accuracy:	synchronised with mains	≤ ±1 s/day at +20 °C
Power reserve:	- -	R 200 h (230 V), R 100 h (110 V)
Pollution degree:	2	2
Type:	1 BRTU	1 BSTU